

Product datasheet for **TA350118**

KLHL1 Rabbit Polyclonal Antibody

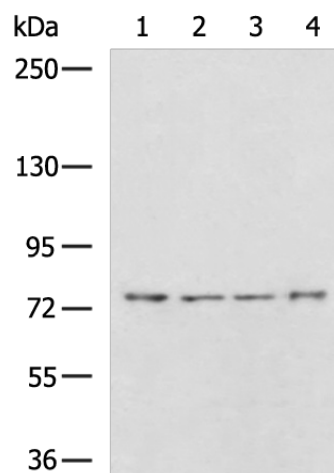
Product data:

Product Type:	Primary Antibodies
Applications:	IHC, WB
Recommended Dilution:	WB: 200-1000 WB positive control: HepG2, 231, HeLa, NIH/3T3 cell lysates IHC: 50-100 Positive control: Human esophagus cancer Predicted cell location: Cytoplasm
Reactivity:	Human, Mouse
Host:	Rabbit
Isotype:	IgG
Clonality:	Polyclonal
Immunogen:	Fusion protein of human KLHL1
Formulation:	pH7.4 PBS, 0.05% NaN ₃ , 40% Glycerol
Concentration:	lot specific
Purification:	Antigen affinity purification
Conjugation:	Unconjugated
Storage:	Store at -20°C as received.
Stability:	Stable for 12 months from date of receipt.
Predicted Protein Size:	83 kDa
Gene Name:	kelch like family member 1
Database Link:	NP_065917 Entrez Gene 93688 Mouse Entrez Gene 57626 Human Q9NR64
Background:	The KLHL1 protein belongs to a family of actin-organizing proteins related to Drosophila Kelch
Synonyms:	MRP2

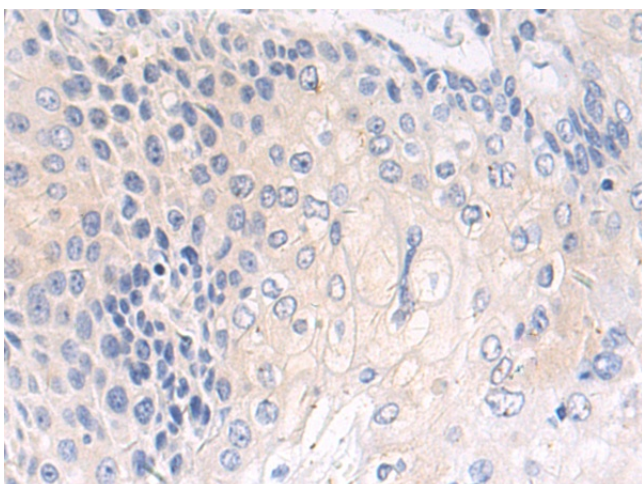


[View online »](#)

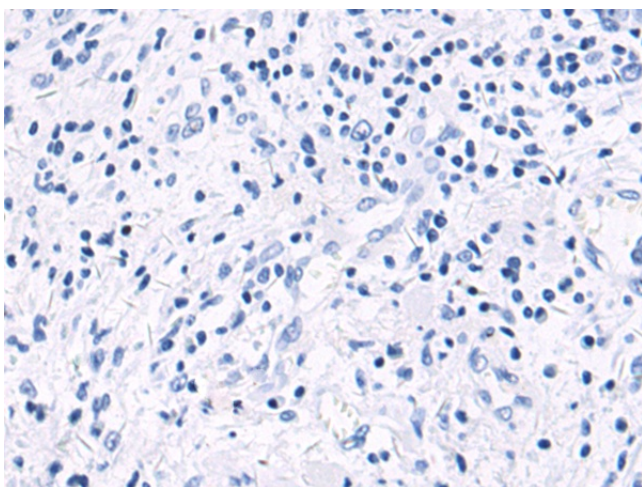
Product images:



Gel: 6%SDS-PAGE
Lysate: 40 μ g
Lane 1-4: HepG2
231
Hela
NIH/3T3 cell lysates
Primary antibody: TA350118 (KLHL1 Antibody) at
dilution 1/500
Secondary antibody: Goat anti rabbit IgG at
1/5000 dilution
Exposure time: 5 minutes



Immunohistochemistry of paraffin-embedded
Human esophagus cancer tissue using TA350118
(KLHL1 Antibody) at dilution 1/60 (Original
magnification: \times 200)



Immunohistochemistry of paraffin-embedded Human esophagus cancer tissue using TA350118 (KLHL1 Antibody) at dilution 1/60, treated with fusion protein. (Original magnification: ×200)