

Product datasheet for **TA350117S**

KIF20A Rabbit Polyclonal Antibody

Product data:

Product Type:	Primary Antibodies
Applications:	IHC, WB
Recommended Dilution:	WB: 200-1000 WB positive control: K562, 293T and hela cells IHC: 50-200 Positive control: Human breast cancer Predicted cell location: Cytoplasm or Nucleus
Reactivity:	Human, Mouse
Host:	Rabbit
Isotype:	IgG
Clonality:	Polyclonal
Immunogen:	Fusion protein of human KIF20A
Formulation:	pH7.4 PBS, 0.05% NaN ₃ , 40% Glycerol
Purification:	Antigen affinity purification
Conjugation:	Unconjugated
Storage:	Store at -20°C as received.
Stability:	Stable for 12 months from date of receipt.
Predicted Protein Size:	100 kDa
Gene Name:	kinesin family member 20A
Database Link:	NP_005724 Entrez Gene 19348 Mouse Entrez Gene 10112 Human O95235

Background: KIF20A (kinesin family member 20A), also known as Rabkinesin-6, RAB6KIFL (Rab6-interacting kinesin-like protein), GG10_2 or MKLP2 (mitotic kinesin-like protein 2), is a 890 amino acid protein that contains one kinesin-motor domain and belongs to the Kinesin-like protein family. KIF20A locates to the Golgi apparatus and interacts with guanosine triphosphate (GTP)-bound forms of RAB 6. KIF20A may be responsible for the retrograde RAB 6 regulated transport of Golgi membranes and related vesicles along microtubules.

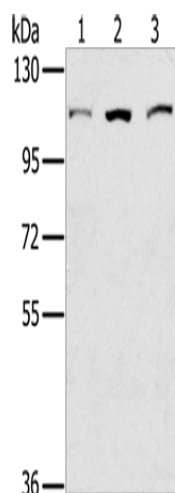


[View online »](#)

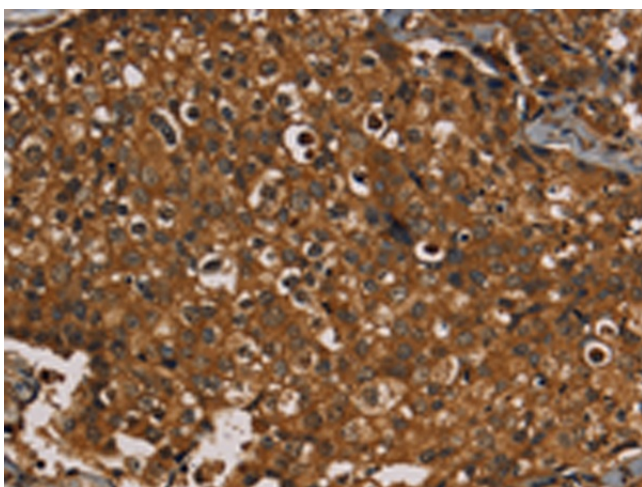
Synonyms: MKLP2; RAB6KIFL

Protein Families: Druggable Genome

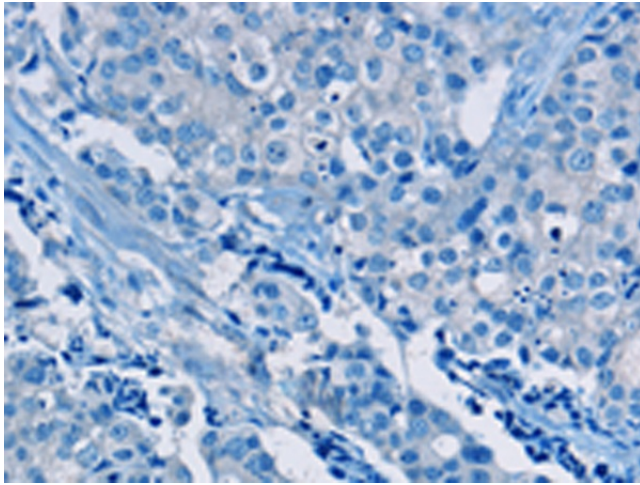
Product images:



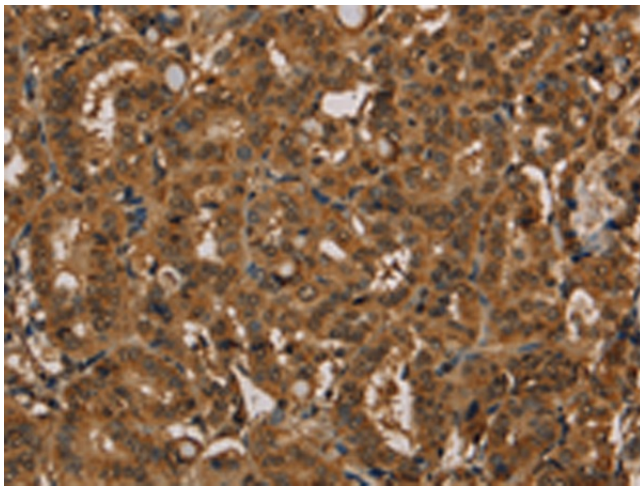
Gel: 6%SDS-PAGE
Lysate: 40 μ g
Lane 1-3: K562 cells
293T cells
hela cells
Primary antibody: [TA350117] (KIF20A Antibody)
at dilution 1/400
Secondary antibody: Goat anti rabbit IgG at
1/8000 dilution
Exposure time: 10 seconds



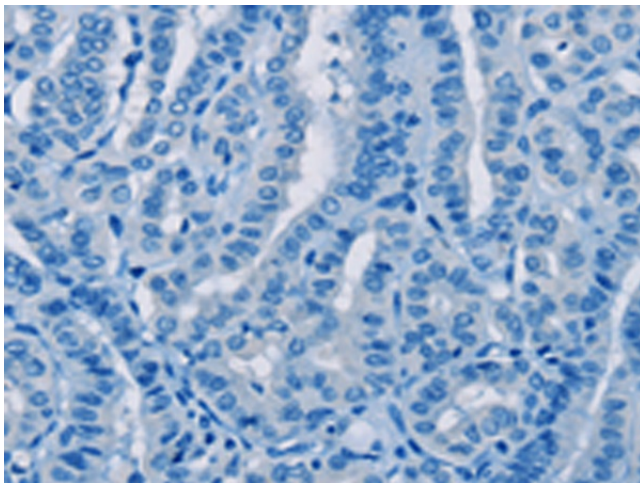
Immunohistochemistry of paraffin-embedded
Human breast cancer tissue using [TA350117]
(KIF20A Antibody) at dilution 1/20 (Original
magnification: \times 200)



Immunohistochemistry of paraffin-embedded Human breast cancer tissue using [TA350117] (KIF20A Antibody) at dilution 1/20, treated with fusion protein. (Original magnification: ×200)



Immunohistochemistry of paraffin-embedded Human thyroid cancer tissue using [TA350117] (KIF20A Antibody) at dilution 1/20 (Original magnification: ×200)



Immunohistochemistry of paraffin-embedded Human thyroid cancer tissue using [TA350117] (KIF20A Antibody) at dilution 1/20, treated with fusion protein. (Original magnification: ×200)