

Product datasheet for **TA350116**

Kinesin Heavy Chain 2 (KIF2A) Rabbit Polyclonal Antibody

Product data:

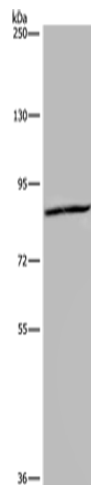
Product Type:	Primary Antibodies
Applications:	IHC, WB
Recommended Dilution:	WB: 200-1000 WB positive control: Hela cells IHC: 100-300 Positive control: Human placenta Predicted cell location: Cytoplasm
Reactivity:	Human, Mouse, Rat
Host:	Rabbit
Isotype:	IgG
Clonality:	Polyclonal
Immunogen:	Fusion protein of human KIF2A
Formulation:	pH7.4 PBS, 0.05% NaN ₃ , 40% Glycerol
Concentration:	lot specific
Purification:	Antigen affinity purification
Conjugation:	Unconjugated
Storage:	Store at -20°C as received.
Stability:	Stable for 12 months from date of receipt.
Predicted Protein Size:	80 kDa
Gene Name:	kinesin heavy chain member 2A
Database Link:	NP_004511 Entrez Gene 16563 Mouse Entrez Gene 84391 Rat Entrez Gene 3796 Human O00139
Background:	The protein encoded by this gene is a plus end-directed motor required for normal mitotic progression. The encoded protein is required for normal spindle activity during mitosis and is necessary for normal brain development. Several transcript variants encoding different isoforms have been found for this gene.
Synonyms:	CDCBM3; HK2; KIF2



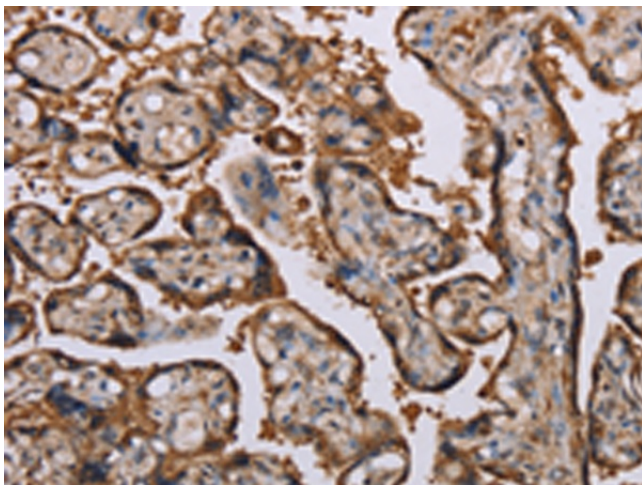
[View online »](#)

Protein Families: Druggable Genome

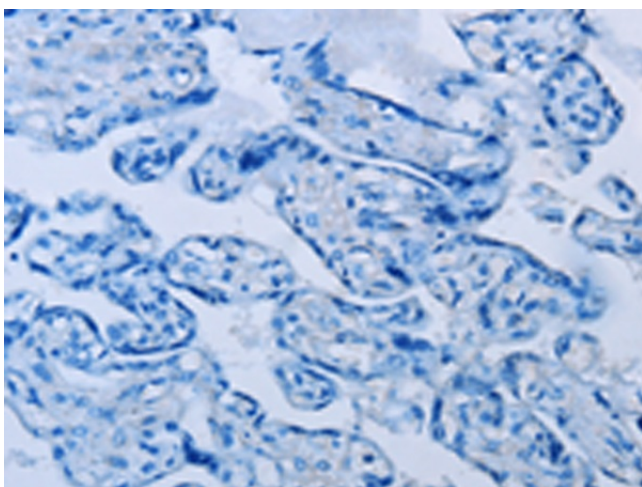
Product images:



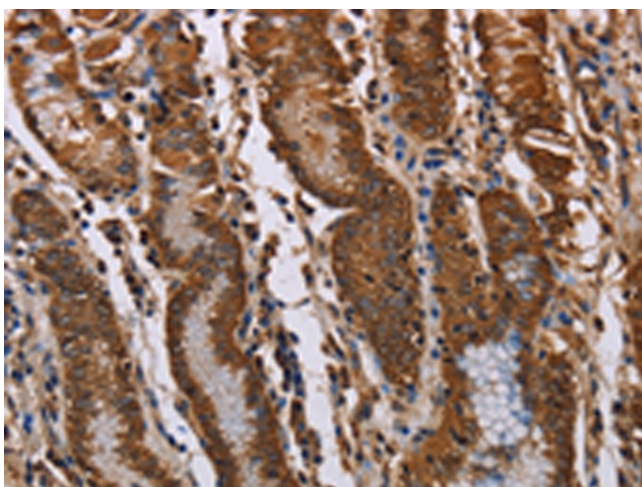
Gel: 6%SDS-PAGE
Lysate: 40 µg
Lane: HeLa cells
Primary antibody: TA350116 (KIF2A Antibody) at dilution 1/350
Secondary antibody: Goat anti rabbit IgG at 1/8000 dilution
Exposure time: 20 seconds



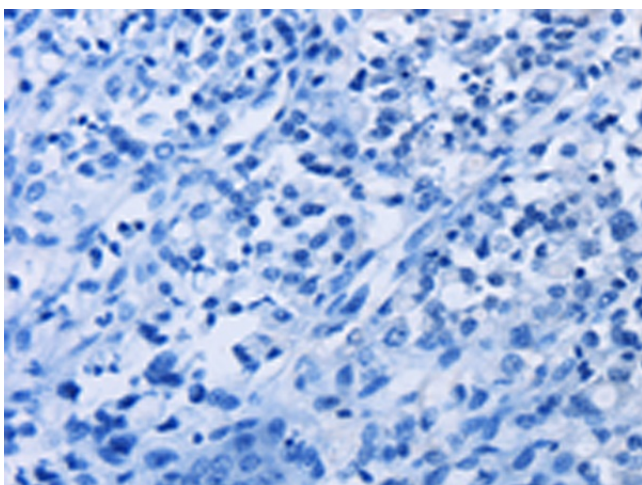
Immunohistochemistry of paraffin-embedded Human placenta tissue using TA350116 (KIF2A Antibody) at dilution 1/70 (Original magnification: ×200)



Immunohistochemistry of paraffin-embedded Human placenta tissue using TA350116 (KIF2A Antibody) at dilution 1/70, treated with fusion protein. (Original magnification: x200)



Immunohistochemistry of paraffin-embedded Human gastric cancer tissue using TA350116 (KIF2A Antibody) at dilution 1/70 (Original magnification: x200)



Immunohistochemistry of paraffin-embedded Human gastric cancer tissue using TA350116 (KIF2A Antibody) at dilution 1/70, treated with fusion protein. (Original magnification: x200)