

## Product datasheet for **TA350115S**

### KIF1C Rabbit Polyclonal Antibody

#### Product data:

Product Type:	Primary Antibodies
Applications:	IHC, WB
Recommended Dilution:	WB: 200-1000 WB positive control: A549 cells IHC: 50-200 Positive control: Human breast cancer Predicted cell location: Cytoplasm
Reactivity:	Human, Mouse, Rat
Host:	Rabbit
Isotype:	IgG
Clonality:	Polyclonal
Immunogen:	Fusion protein of human KIF1C
Formulation:	pH7.4 PBS, 0.05% NaN <sub>3</sub> , 40% Glycerol
Purification:	Antigen affinity purification
Conjugation:	Unconjugated
Storage:	Store at -20°C as received.
Stability:	Stable for 12 months from date of receipt.
Predicted Protein Size:	123 kDa
Gene Name:	kinesin family member 1C
Database Link:	<a href="#">NP_006603</a> <a href="#">Entrez Gene 16562 Mouse</a> <a href="#">Entrez Gene 113886 Rat</a> <a href="#">Entrez Gene 10749 Human</a> <a href="#">O43896</a>



[View online »](#)

**Background:**

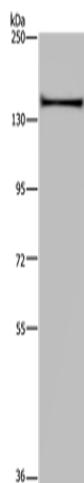
The kinesins constitute a large family of microtubule-dependent motor proteins, which are responsible for the distribution of numerous organelles, vesicles and macromolecular complexes throughout the cell . Individual kinesin members play crucial roles in cell division, intracellular transport, and membrane trafficking events including endocytosis and transcytosis . KIF1C is a member of the KIF1/Unc104 family of kinesin-like proteins, which are involved in the transport of mitochondria or synaptic vesicles in axons . Human KIF1C maps to chromosome 17p13 and encodes a predicted 1,103 amino acid protein with abundant expression in heart and skeletal muscle . Tyrosine phosphorylation is a putative regulator of KIF1C mediated retrograde transport of Golgi vesicles to the endoplasmic reticulum. KIF1C is capable of forming homodimers and can noncovalently associate with 14-3-3 beta, gamma, epsilon and zeta . In mouse macrophages, KIF1C is required for anthrax lethal toxin resistance.

**Synonyms:**

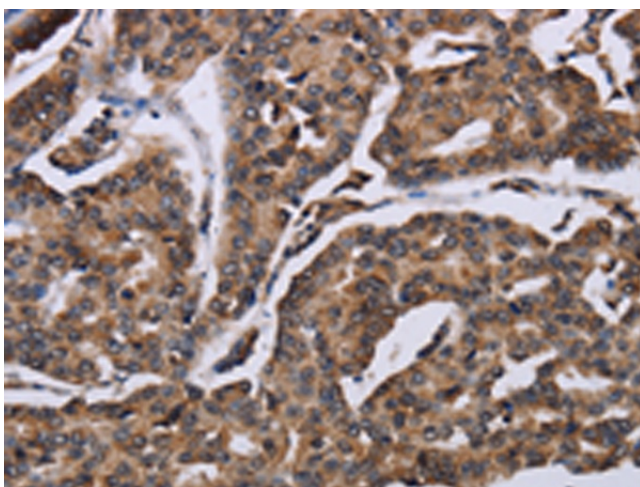
LTXS1; SATX2; SAX2; SPAX2; SPG58

**Protein Families:**

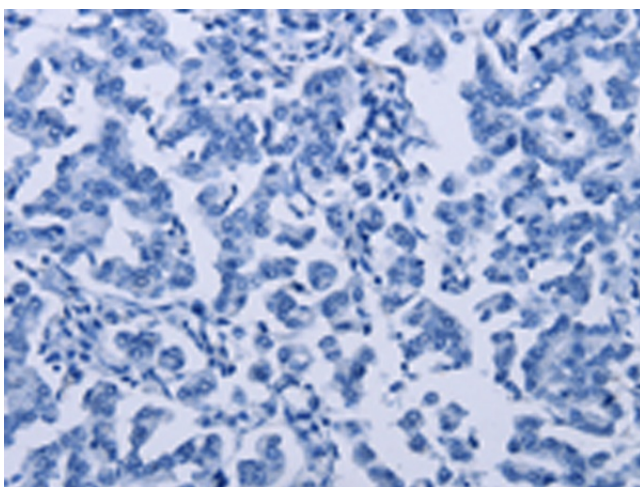
Druggable Genome

**Product images:**


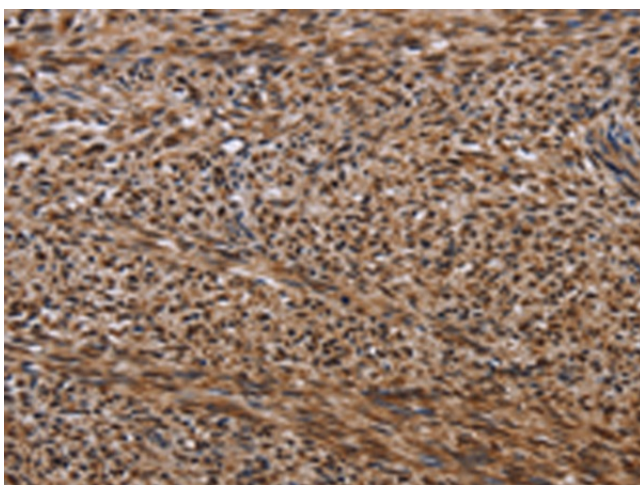
Gel: 6%SDS-PAGE  
Lysate: 40 µg  
Lane: A549 cells  
Primary antibody: [TA350115] (KIF1C Antibody) at dilution 1/200  
Secondary antibody: Goat anti rabbit IgG at 1/8000 dilution  
Exposure time: 20 seconds



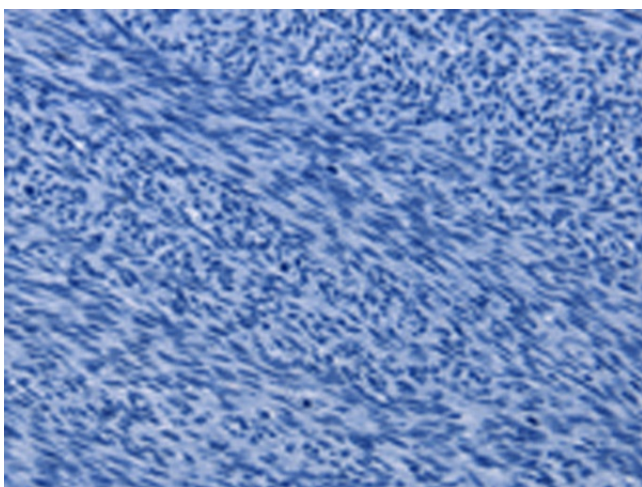
Immunohistochemistry of paraffin-embedded Human breast cancer tissue using [TA350115] (KIF1C Antibody) at dilution 1/60 (Original magnification: ×200)



Immunohistochemistry of paraffin-embedded Human breast cancer tissue using [TA350115] (KIF1C Antibody) at dilution 1/60, treated with fusion protein. (Original magnification: ×200)



Immunohistochemistry of paraffin-embedded Human sarcoma tissue using [TA350115] (KIF1C Antibody) at dilution 1/60 (Original magnification: ×200)



Immunohistochemistry of paraffin-embedded Human sarcoma tissue using [TA350115] (KIF1C Antibody) at dilution 1/60, treated with fusion protein. (Original magnification: ×200)