

Product datasheet for **TA350115**

KIF1C Rabbit Polyclonal Antibody

Product data:

Product Type:	Primary Antibodies
Applications:	IHC, WB
Recommended Dilution:	WB: 200-1000 WB positive control: A549 cells IHC: 50-200 Positive control: Human breast cancer Predicted cell location: Cytoplasm
Reactivity:	Human, Mouse, Rat
Host:	Rabbit
Isotype:	IgG
Clonality:	Polyclonal
Immunogen:	Fusion protein of human KIF1C
Formulation:	pH7.4 PBS, 0.05% NaN ₃ , 40% Glycerol
Concentration:	lot specific
Purification:	Antigen affinity purification
Conjugation:	Unconjugated
Storage:	Store at -20°C as received.
Stability:	Stable for 12 months from date of receipt.
Predicted Protein Size:	123 kDa
Gene Name:	kinesin family member 1C
Database Link:	NP_006603 Entrez Gene 16562 Mouse Entrez Gene 113886 Rat Entrez Gene 10749 Human O43896



[View online »](#)

Background:

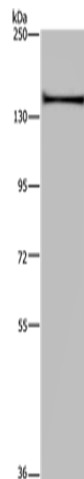
The kinesins constitute a large family of microtubule-dependent motor proteins, which are responsible for the distribution of numerous organelles, vesicles and macromolecular complexes throughout the cell . Individual kinesin members play crucial roles in cell division, intracellular transport, and membrane trafficking events including endocytosis and transcytosis . KIF1C is a member of the KIF1/Unc104 family of kinesin-like proteins, which are involved in the transport of mitochondria or synaptic vesicles in axons . Human KIF1C maps to chromosome 17p13 and encodes a predicted 1,103 amino acid protein with abundant expression in heart and skeletal muscle . Tyrosine phosphorylation is a putative regulator of KIF1C mediated retrograde transport of Golgi vesicles to the endoplasmic reticulum. KIF1C is capable of forming homodimers and can noncovalently associate with 14-3-3 beta, gamma, epsilon and zeta . In mouse macrophages, KIF1C is required for anthrax lethal toxin resistance.

Synonyms:

LTXS1; SATX2; SAX2; SPAX2; SPG58

Protein Families:

Druggable Genome

Product images:

Gel: 6%SDS-PAGE

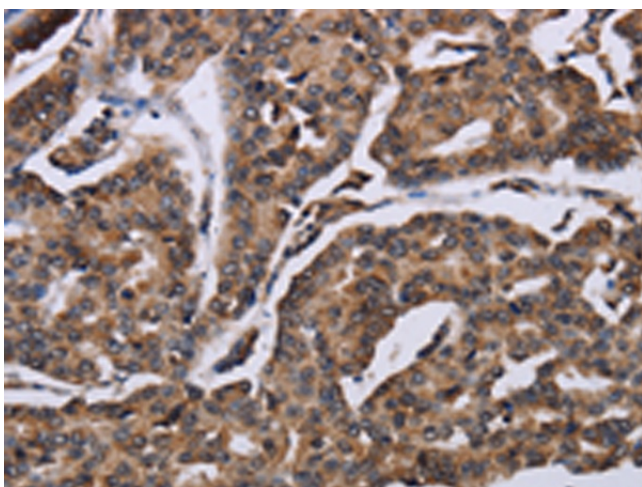
Lysate: 40 µg

Lane: A549 cells

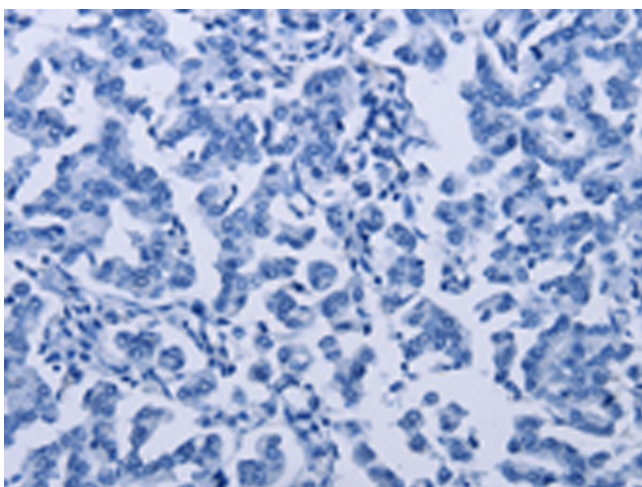
Primary antibody: TA350115 (KIF1C Antibody) at dilution 1/200

Secondary antibody: Goat anti rabbit IgG at 1/8000 dilution

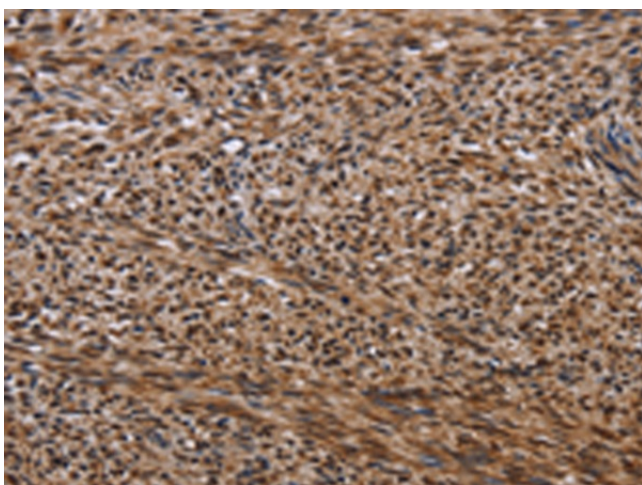
Exposure time: 20 seconds



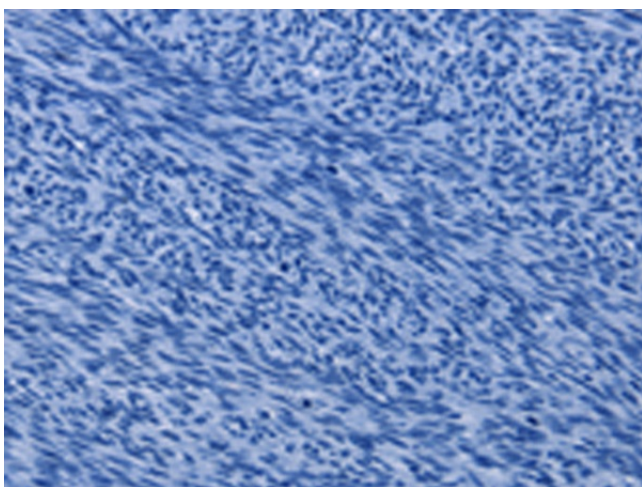
Immunohistochemistry of paraffin-embedded Human breast cancer tissue using TA350115 (KIF1C Antibody) at dilution 1/60 (Original magnification: x200)



Immunohistochemistry of paraffin-embedded Human breast cancer tissue using TA350115 (KIF1C Antibody) at dilution 1/60, treated with fusion protein. (Original magnification: x200)



Immunohistochemistry of paraffin-embedded Human sarcoma tissue using TA350115 (KIF1C Antibody) at dilution 1/60 (Original magnification: x200)



Immunohistochemistry of paraffin-embedded Human sarcoma tissue using TA350115 (KIF1C Antibody) at dilution 1/60, treated with fusion protein. (Original magnification: $\times 200$)