

Product datasheet for **TA350111S**

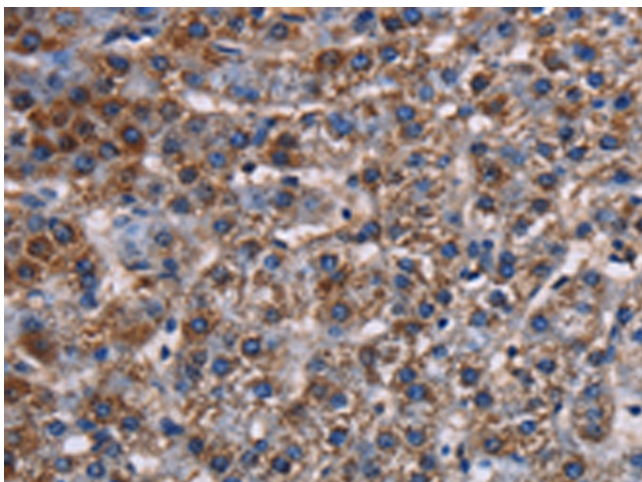
KCNK1 Rabbit Polyclonal Antibody

Product data:

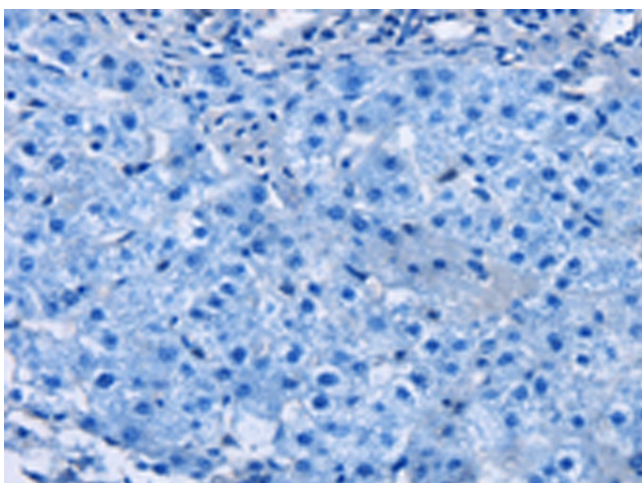
Product Type:	Primary Antibodies
Applications:	IHC
Recommended Dilution:	IHC: 50-200 Positive control: Human lung cancer Predicted cell location: Cytoplasm
Reactivity:	Human, Mouse, Rat
Host:	Rabbit
Isotype:	IgG
Clonality:	Polyclonal
Immunogen:	Fusion protein of human KCNK1
Formulation:	pH7.4 PBS, 0.05% NaN ₃ , 40% Glycerol
Purification:	Antigen affinity purification
Conjugation:	Unconjugated
Storage:	Store at -20°C as received.
Stability:	Stable for 12 months from date of receipt.
Gene Name:	potassium two pore domain channel subfamily K member 1
Database Link:	NP_002236 Entrez Gene 16525 Mouse Entrez Gene 59324 Rat Entrez Gene 3775 Human O00180
Background:	This gene encodes one of the members of the superfamily of potassium channel proteins containing two pore-forming P domains. The product of this gene has not been shown to be a functional channel, however, it may require other non-pore-forming proteins for activity.
Synonyms:	DPK; HOHO; K2P1; K2p1.1; KCNO1; TWIK-1; TWIK1
Protein Families:	Druggable Genome, Ion Channels: Potassium, Transmembrane



[View online »](#)

Product images:

Immunohistochemistry of paraffin-embedded Human lung cancer tissue using [TA350111] (KCNK1 Antibody) at dilution 1/50 (Original magnification: $\times 200$)



Immunohistochemistry of paraffin-embedded Human lung cancer tissue using [TA350111] (KCNK1 Antibody) at dilution 1/50, treated with fusion protein. (Original magnification: $\times 200$)