

## Product datasheet for **TA350109**

### Lysyl tRNA synthetase (KARS) Rabbit Polyclonal Antibody

#### Product data:

Product Type:	Primary Antibodies
Applications:	IHC, WB
Recommended Dilution:	WB: 500-2000 WB positive control: K562, A549, HT-29, 293T, Hela and Jurkat cells IHC: 100-300 Positive control: Human brain Predicted cell location: Cytoplasm or Nucleus
Reactivity:	Human, Mouse, Rat
Host:	Rabbit
Isotype:	IgG
Clonality:	Polyclonal
Immunogen:	Fusion protein of human KARS
Formulation:	pH7.4 PBS, 0.05% NaN <sub>3</sub> , 40% Glycerol
Concentration:	lot specific
Purification:	Antigen affinity purification
Conjugation:	Unconjugated
Storage:	Store at -20°C as received.
Stability:	Stable for 12 months from date of receipt.
Predicted Protein Size:	68 kDa
Gene Name:	lysyl-tRNA synthetase
Database Link:	<a href="#">NP_005539</a> <a href="#">Entrez Gene 85305 Mouse</a> <a href="#">Entrez Gene 292028 Rat</a> <a href="#">Entrez Gene 3735 Human</a> <a href="#">Q15046</a>

**Background:** Aminoacyl-tRNA synthetases are a class of enzymes that charge tRNAs with their cognate amino acids. Lysyl-tRNA synthetase is a homodimer localized to the cytoplasm which belongs to the class II family of tRNA synthetases. It has been shown to be a target of autoantibodies in the human autoimmune diseases, polymyositis or dermatomyositis. Alternatively spliced transcript variants encoding different isoforms have been found for this gene.

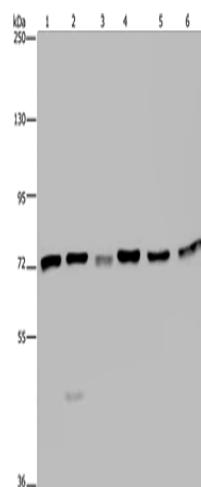


[View online »](#)

**Synonyms:** CMTRIB; DFNB89; KARS1; KARS2; KRS

**Protein Pathways:** Aminoacyl-tRNA biosynthesis

## Product images:



Gel: 6%SDS-PAGE

Lysate: 40 µg

Lane 1-6: K562 cells

A549 cells

HT29 cells

293T cells

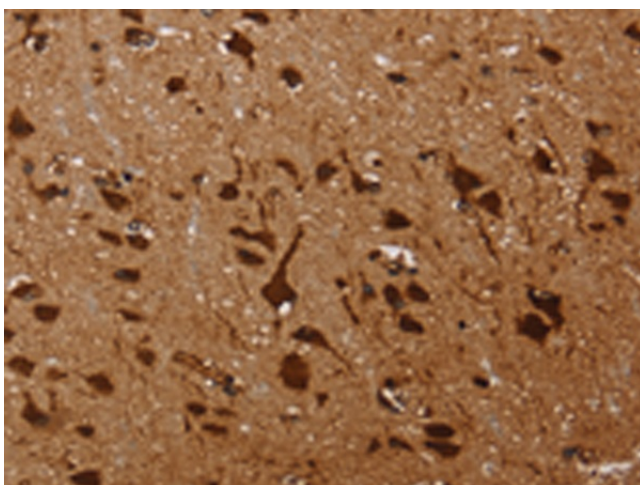
Hela cells

Jurkat cells

Primary antibody: TA350109 (KARS1 Antibody) at dilution 1/350

Secondary antibody: Goat anti rabbit IgG at 1/8000 dilution

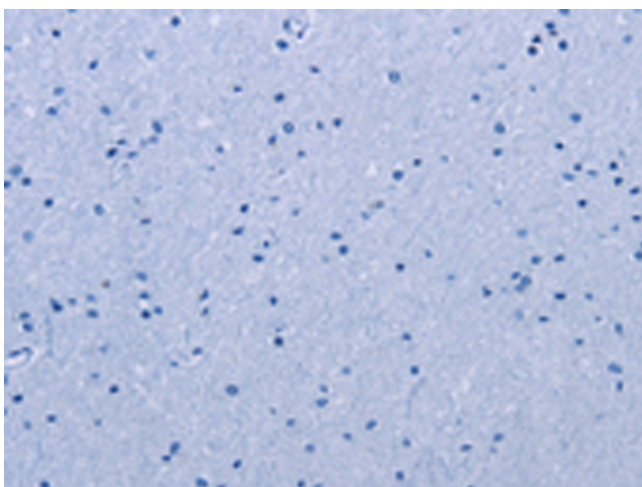
Exposure time: 20 seconds



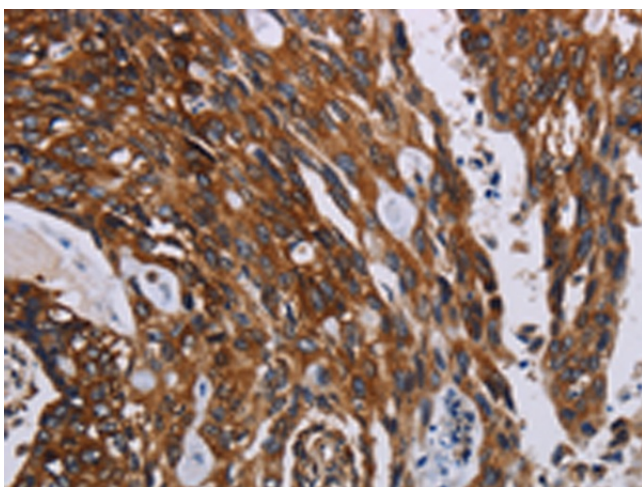
Immunohistochemistry of paraffin-embedded

Human brain tissue using TA350109 (KARS1

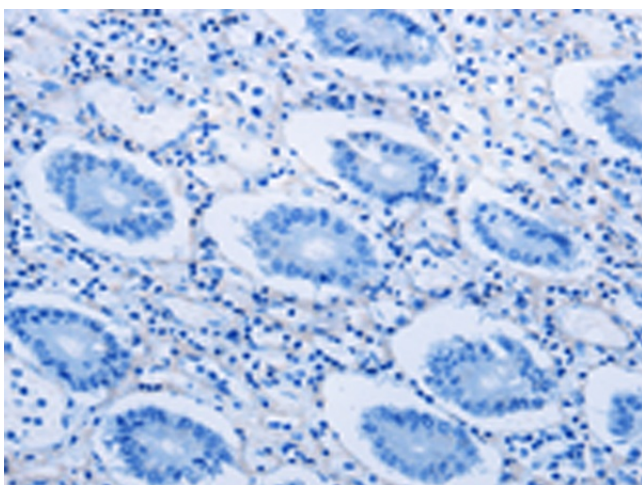
Antibody) at dilution 1/60 (Original magnification: ×200)



Immunohistochemistry of paraffin-embedded Human brain tissue using TA350109 (KARS1 Antibody) at dilution 1/60, treated with fusion protein. (Original magnification: ×200)



Immunohistochemistry of paraffin-embedded Human colon cancer tissue using TA350109 (KARS1 Antibody) at dilution 1/60 (Original magnification: ×200)



Immunohistochemistry of paraffin-embedded Human colon cancer tissue using TA350109 (KARS1 Antibody) at dilution 1/60, treated with fusion protein. (Original magnification: ×200)