

## Product datasheet for **TA350107**

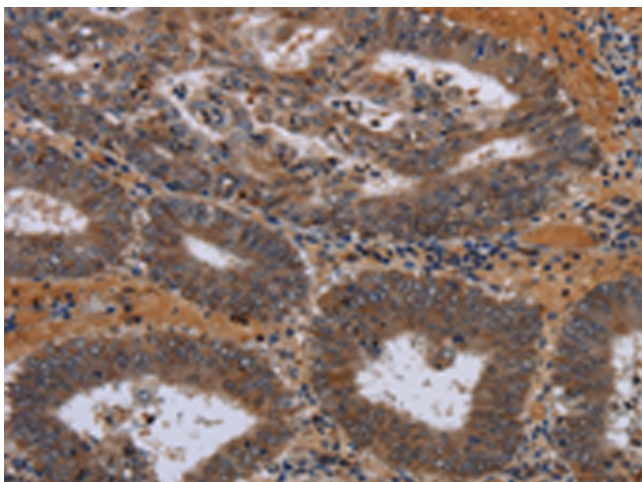
### JMJD7 Rabbit Polyclonal Antibody

#### Product data:

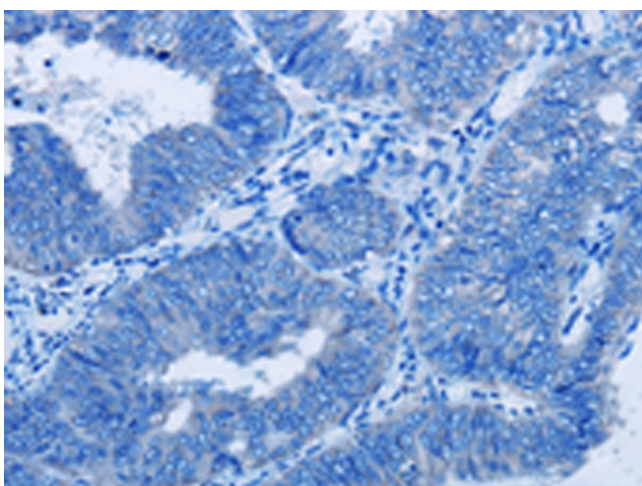
Product Type:	Primary Antibodies
Applications:	IHC
Recommended Dilution:	IHC: 50-200 Positive control: Human colon cancer Predicted cell location: Cytoplasm
Reactivity:	Human, Mouse
Host:	Rabbit
Isotype:	IgG
Clonality:	Polyclonal
Immunogen:	Fusion protein of human JMJD7
Formulation:	pH7.4 PBS, 0.05% NaN <sub>3</sub> , 40% Glycerol
Concentration:	lot specific
Purification:	Antigen affinity purification
Conjugation:	Unconjugated
Storage:	Store at -20°C as received.
Stability:	Stable for 12 months from date of receipt.
Gene Name:	jumonji domain containing 7
Database Link:	<a href="#">NP_001108104</a> <a href="#">Entrez Gene 433466 Mouse</a> <a href="#">Entrez Gene 100137047 Human</a> <a href="#">POC870</a>
Background:	This gene encodes a highly conserved protein with a JmjC domain, which are part of the cupin metalloenzyme superfamily. JmjC proteins may function as 2-oxoglutarate-Fe(II)-dependent dioxygenases. Most tissues also express read-through transcripts from this gene into the downstream phospholipase A2, group IVB (cytosolic) gene, some of which may encode fusion proteins combining the N-terminus of this protein with the phospholipase A2, group IVB protein.
Synonyms:	FLJ20543; FLJ20656; FLJ20807; FLJ77014; FLJ78330



[View online »](#)

**Product images:**

Immunohistochemistry of paraffin-embedded Human colon cancer tissue using TA350107 (JMJD7 Antibody) at dilution 1/30 (Original magnification:  $\times 200$ )



Immunohistochemistry of paraffin-embedded Human colon cancer tissue using TA350107 (JMJD7 Antibody) at dilution 1/30, treated with fusion protein. (Original magnification:  $\times 200$ )