

## Product datasheet for **TA350106S**

### JMJD5 (KDM8) Rabbit Polyclonal Antibody

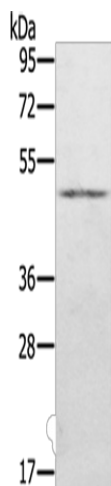
#### Product data:

Product Type:	Primary Antibodies
Applications:	WB
Recommended Dilution:	WB: 200-1000 WB positive control: Human normal stomach tissue
Reactivity:	Human, Mouse, Rat
Host:	Rabbit
Isotype:	IgG
Clonality:	Polyclonal
Immunogen:	Fusion protein of human KDM8
Formulation:	pH7.4 PBS, 0.05% NaN <sub>3</sub> , 40% Glycerol
Purification:	Antigen affinity purification
Conjugation:	Unconjugated
Storage:	Store at -20°C as received.
Stability:	Stable for 12 months from date of receipt.
Predicted Protein Size:	47 kDa
Gene Name:	lysine demethylase 8
Database Link:	<a href="#">NP_001138820</a> <a href="#">Entrez Gene 77035 Mouse</a> <a href="#">Entrez Gene 308976 Rat</a> <a href="#">Entrez Gene 79831 Human</a> <a href="#">Q8N371</a>
Background:	This gene likely encodes a histone lysine demethylase. Studies of a similar protein in mouse indicate a potential role for this protein as a tumor suppressor. Alternatively spliced transcript variants have been described.
Synonyms:	JMJD5



[View online »](#)

## Product images:



Gel: 8%SDS-PAGE  
Lysate: 40 µg  
Lane: Human normal stomach tissue  
Primary antibody: [TA350106] (KDM8 Antibody) at dilution 1/500  
Secondary antibody: Goat anti rabbit IgG at 1/8000 dilution  
Exposure time: 3 minutes