

Product datasheet for **TA350104**

JMJD6 Rabbit Polyclonal Antibody

Product data:

Product Type:	Primary Antibodies
Applications:	IHC, WB
Recommended Dilution:	WB: 500-2000 WB positive control: Mouse liver tissue IHC: 50-200 Positive control: Human brain Predicted cell location: Nucleus
Reactivity:	Human, Mouse, Rat
Host:	Rabbit
Isotype:	IgG
Clonality:	Polyclonal
Immunogen:	Fusion protein of human JMJD6
Formulation:	pH7.4 PBS, 0.05% NaN ₃ , 40% Glycerol
Concentration:	lot specific
Purification:	Antigen affinity purification
Conjugation:	Unconjugated
Storage:	Store at -20°C as received.
Stability:	Stable for 12 months from date of receipt.
Predicted Protein Size:	46 kDa
Gene Name:	arginine demethylase and lysine hydroxylase
Database Link:	NP_055982 Entrez Gene 107817 Mouse Entrez Gene 360665 Rat Entrez Gene 23210 Human Q6NYC1



[View online »](#)

Background:

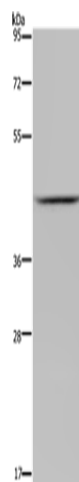
This gene encodes a nuclear protein with a JmjC domain. JmjC domain-containing proteins are predicted to function as protein hydroxylases or histone demethylases. This protein was first identified as a putative phosphatidylserine receptor involved in phagocytosis of apoptotic cells; however, subsequent studies have indicated that it does not directly function in the clearance of apoptotic cells, and questioned whether it is a true phosphatidylserine receptor. Multiple transcript variants encoding different isoforms have been found for this gene.

Synonyms:

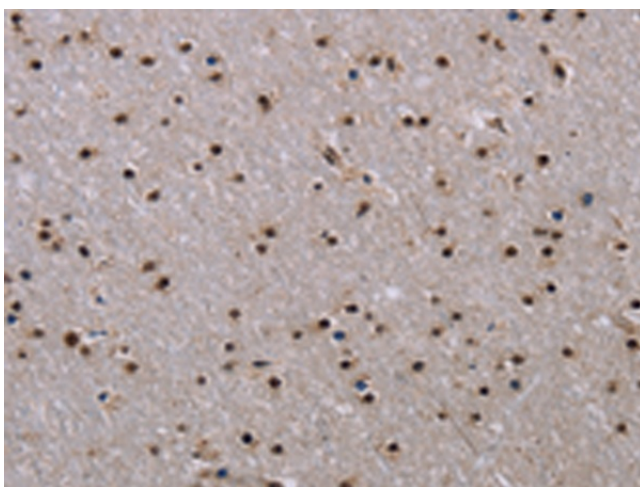
PSR; PTDSR; PTDSR1

Protein Families:

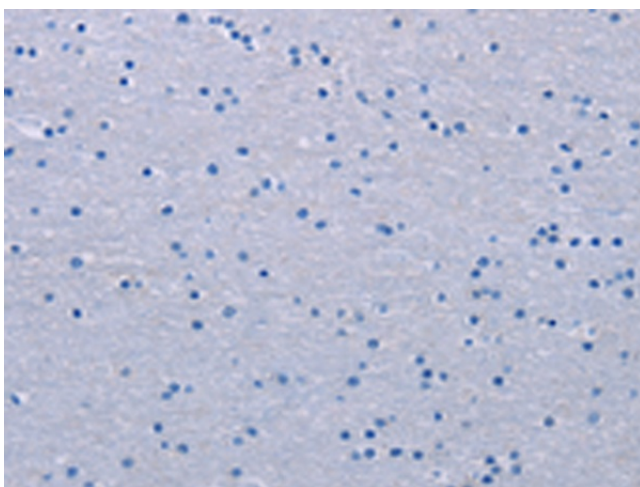
Druggable Genome, ES Cell Differentiation/IPS

Product images:

Gel: 8%SDS-PAGE
Lysate: 40 µg
Lane: Mouse liver tissue
Primary antibody: TA350104 (JMJD6 Antibody) at dilution 1/800
Secondary antibody: Goat anti rabbit IgG at 1/8000 dilution
Exposure time: 1 minute



Immunohistochemistry of paraffin-embedded Human brain tissue using TA350104 (JMJD6 Antibody) at dilution 1/40 (Original magnification: ×200)



Immunohistochemistry of paraffin-embedded Human brain tissue using TA350104 (JMJD6 Antibody) at dilution 1/40, treated with fusion protein. (Original magnification: ×200)