

Product datasheet for **TA350103S**

KDM3B Rabbit Polyclonal Antibody

Product data:

| | |
|--------------------------------|---------------------------------------------------------------------------------------------------------------------------------------------------------------------------------------|
| Product Type: | Primary Antibodies |
| Applications: | IHC, WB |
| Recommended Dilution: | WB: 1000-5000 WB positive control: Hela and 293T cells, mouse skeletal muscle tissue IHC: 50-200 Positive control: Human cervical cancer Predicted cell location: Nucleus |
| Reactivity: | Human, Mouse |
| Host: | Rabbit |
| Isotype: | IgG |
| Clonality: | Polyclonal |
| Immunogen: | Fusion protein of human KDM3B |
| Formulation: | pH7.4 PBS, 0.05% NaN ₃ , 40% Glycerol |
| Purification: | Antigen affinity purification |
| Conjugation: | Unconjugated |
| Storage: | Store at -20°C as received. |
| Stability: | Stable for 12 months from date of receipt. |
| Predicted Protein Size: | 192 kDa |
| Gene Name: | lysine demethylase 3B |
| Database Link: | NP_057688 Entrez Gene 277250 Mouse Entrez Gene 51780 Human Q7LBC6 |



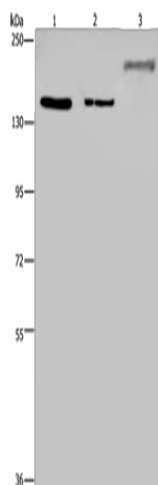
[View online »](#)

Background:

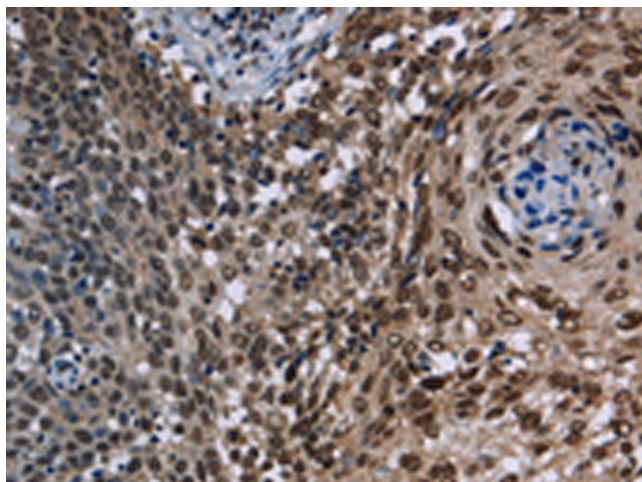
JMJD1B (jumonji domain containing 1B), also known as KDM3B, 5qNCA (5q Nuclear Co-Activator) or C5orf7, is a member of the JHDM2 histone demethylase family of proteins. Expressed in a wide variety of tissues, JMJD1B localizes to the nucleus and contains one JMJC domain and a C-terminal zinc finger motif. JMJD1B functions as a histone demethylase and, using iron as a cofactor, demethylates lysine-9 of Histone H3. This suggests that JMJD1B plays a central role in the histone code. The gene encoding human JMJD1B is located within the 5q region of the genome that is often deleted in myeloid leukemias and myelodysplasias. This implies that JMJD1B may function as a tumor suppressor of myeloid leukemia. Ectopic expression of JMJD1B exhibits growth suppressive activities, further supporting a role for JMJD1B in tumor suppression.

Synonyms:

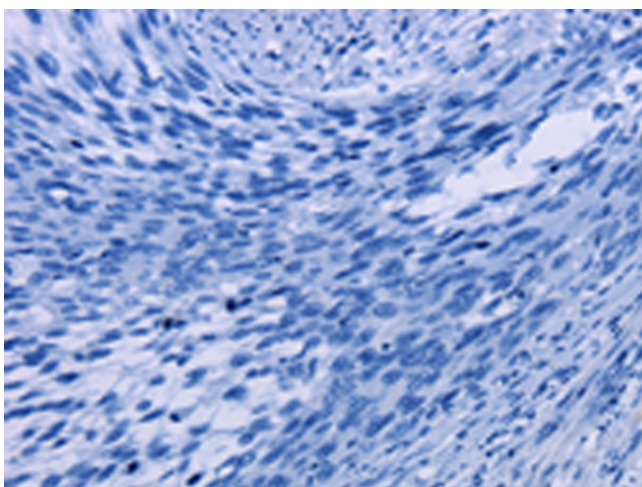
5qNCA; C5orf7; JMJD1B; NET22

Product images:

Gel: 6%SDS-PAGE
Lysate: 40 µg
Lane 1-3: HeLa cells
293T cells
mouse skeletal muscle tissue
Primary antibody: [TA350103] (KDM3B Antibody)
at dilution 1/1000
Secondary antibody: Goat anti rabbit IgG at
1/8000 dilution
Exposure time: 1 minute



Immunohistochemistry of paraffin-embedded
Human cervical cancer tissue using [TA350103]
(KDM3B Antibody) at dilution 1/40 (Original
magnification: ×200)



Immunohistochemistry of paraffin-embedded Human cervical cancer tissue using [TA350103] (KDM3B Antibody) at dilution 1/40, treated with fusion protein. (Original magnification: ×200)