

Product datasheet for **TA350101**

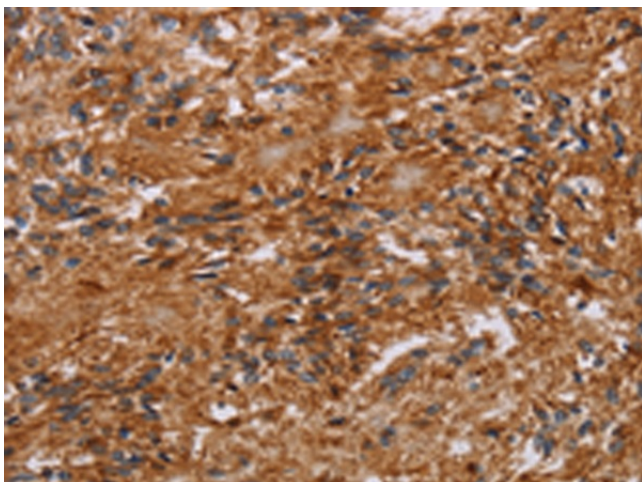
JAKMIP2 Rabbit Polyclonal Antibody

Product data:

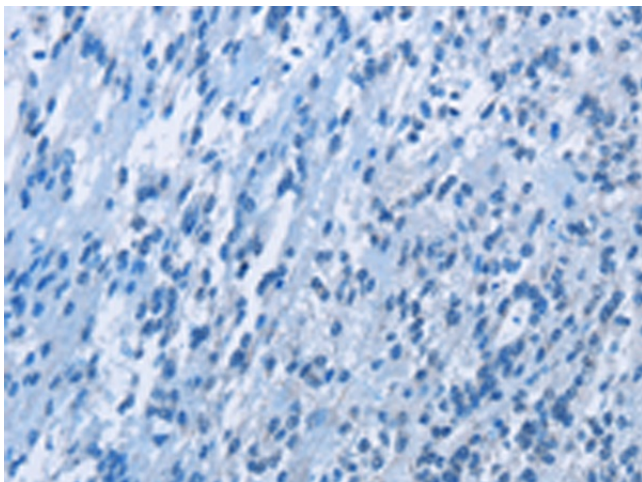
Product Type:	Primary Antibodies
Applications:	IHC
Recommended Dilution:	IHC: 50-200 Positive control: Human ovarian cancer Predicted cell location: Cytoplasm
Reactivity:	Human
Host:	Rabbit
Isotype:	IgG
Clonality:	Polyclonal
Immunogen:	Fusion protein of human JAKMIP2
Formulation:	pH7.4 PBS, 0.05% NaN ₃ , 40% Glycerol
Concentration:	lot specific
Purification:	Antigen affinity purification
Conjugation:	Unconjugated
Storage:	Store at -20°C as received.
Stability:	Stable for 12 months from date of receipt.
Gene Name:	janus kinase and microtubule interacting protein 2
Database Link:	NP_055605 Entrez Gene 9832 Human Q96AA8
Background:	The protein encoded by this gene is reported to be a component of the Golgi matrix. It may act as a golgin protein by negatively regulating transit of secretory cargo and by acting as a structural scaffold of the Golgi. Alternative splicing results in multiple transcript variants.
Synonyms:	JAMIP2; NECC1



[View online »](#)

Product images:

Immunohistochemistry of paraffin-embedded Human ovarian cancer tissue using TA350101 (JAKMIP2 Antibody) at dilution 1/40 (Original magnification: $\times 200$)



Immunohistochemistry of paraffin-embedded Human ovarian cancer tissue using TA350101 (JAKMIP2 Antibody) at dilution 1/40, treated with fusion protein. (Original magnification: $\times 200$)