

Product datasheet for **TA350100**

ITLN1 Rabbit Polyclonal Antibody

Product data:

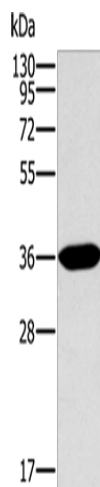
| | |
|-------------------------|--|
| Product Type: | Primary Antibodies |
| Applications: | WB |
| Recommended Dilution: | WB: 1000-5000 WB positive control: Human fetal intestine tissue |
| Reactivity: | Human, Mouse |
| Host: | Rabbit |
| Isotype: | IgG |
| Clonality: | Polyclonal |
| Immunogen: | Fusion protein of human ITLN1 |
| Formulation: | pH7.4 PBS, 0.05% NaN ₃ , 40% Glycerol |
| Concentration: | lot specific |
| Purification: | Antigen affinity purification |
| Conjugation: | Unconjugated |
| Storage: | Store at -20°C as received. |
| Stability: | Stable for 12 months from date of receipt. |
| Predicted Protein Size: | 35 kDa |
| Gene Name: | intelectin 1 |
| Database Link: | NP_060095 Entrez Gene 16429 Mouse Entrez Gene 55600 Human Q8WWA0 |
| Background: | Intelectin-1 also known as the intestinal lactoferrin receptor is a protein that in humans is encoded by the ITLN1 gene. Intelectin-1 functions both as a receptor for bacterial arabinogalactans and for lactoferrin. Has no effect on basal glucose uptake but enhances insulin-stimulated glucose uptake in adipocytes. Increases AKT phosphorylation in the absence and presence of insulin. May play a role in the defense system against microorganisms. May specifically recognize carbohydrate chains of pathogens and bacterial components containing galactofuranosyl residues, in a calcium-dependent manner. |
| Synonyms: | hIntL; HL-1; HL1; INTL; ITLN; LFR; omentin |



[View online »](#)

Protein Families: Druggable Genome, Secreted Protein

Product images:



Gel: 10%SDS-PAGE
Lysate: 40 μ g
Lane: Human fetal intestine tissue
Primary antibody: TA350100 (ITLN1 Antibody) at dilution 1/400
Secondary antibody: Goat anti rabbit IgG at 1/8000 dilution
Exposure time: 2 minutes