

Product datasheet for **TA350097**

CD18 (ITGB2) Rabbit Polyclonal Antibody

Product data:

Product Type:	Primary Antibodies
Applications:	IHC, WB
Recommended Dilution:	WB: 500-2000 WB positive control: 293T and K562 cells IHC: 25-100 Positive control: Human brain Predicted cell location: Cytoplasm
Reactivity:	Human, Mouse
Host:	Rabbit
Isotype:	IgG
Clonality:	Polyclonal
Immunogen:	Fusion protein of human ITGB2
Formulation:	pH7.4 PBS, 0.05% NaN ₃ , 40% Glycerol
Concentration:	lot specific
Purification:	Antigen affinity purification
Conjugation:	Unconjugated
Storage:	Store at -20°C as received.
Stability:	Stable for 12 months from date of receipt.
Predicted Protein Size:	85 kDa
Gene Name:	integrin subunit beta 2
Database Link:	NP_000202 Entrez Gene 16414 Mouse Entrez Gene 3689 Human P05107



[View online »](#)

Background:

The product of this gene belongs to the integrin beta chain family of proteins. Integrins are integral cell-surface proteins composed of an alpha chain and a beta chain. This gene encodes the integrin beta chain beta 2. A given chain may combine with multiple partners resulting in different integrins. For example, beta 2 combines with the alpha L chain to form the integrin LFA-1, and combines with the alpha M chain to form the integrin Mac-1. Integrins are known to participate in cell adhesion as well as cell-surface mediated signalling. Defects in this gene are the cause of leukocyte adhesion deficiency type I (LAD1). Two transcript variants encoding the same protein have been identified for this gene.

Synonyms:

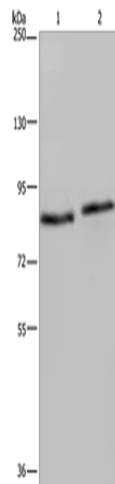
CD18; LAD; LCAMB; LFA-1; MAC-1; MF17; MFI7

Protein Families:

Druggable Genome, Transmembrane

Protein Pathways:

Cell adhesion molecules (CAMs), Leukocyte transendothelial migration, Natural killer cell mediated cytotoxicity, Regulation of actin cytoskeleton, Viral myocarditis

Product images:

Gel: 6%SDS-PAGE

Lysate: 40 µg

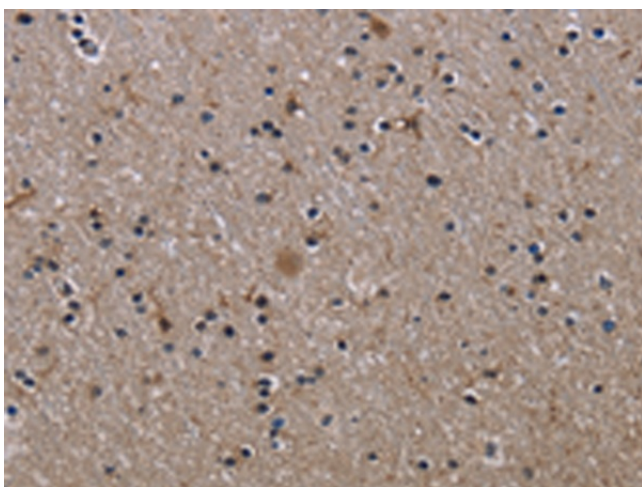
Lane 1-2: 293T cells

K562 cells

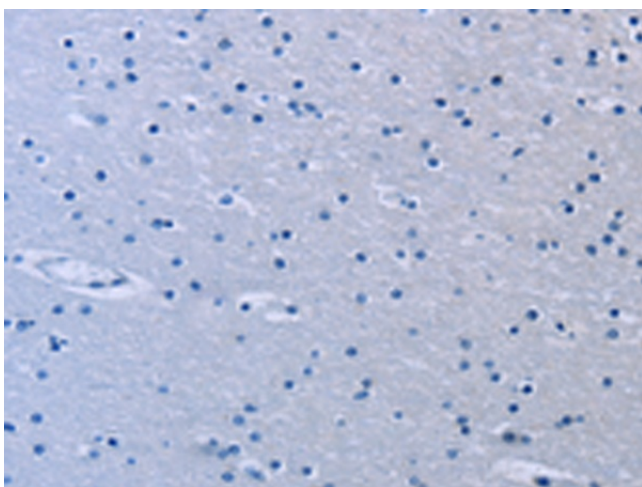
Primary antibody: TA350097 (ITGB2 Antibody) at dilution 1/600

Secondary antibody: Goat anti rabbit IgG at 1/8000 dilution

Exposure time: 3 minutes



Immunohistochemistry of paraffin-embedded Human brain tissue using TA350097 (ITGB2 Antibody) at dilution 1/50 (Original magnification: ×200)



Immunohistochemistry of paraffin-embedded Human brain tissue using TA350097 (ITGB2 Antibody) at dilution 1/50, treated with fusion protein. (Original magnification: ×200)