

Product datasheet for **TA350096**

Integrin alpha E (ITGAE) Rabbit Polyclonal Antibody

Product data:

Product Type:	Primary Antibodies
Applications:	IHC, WB
Recommended Dilution:	WB: 200-1000 WB positive control: LoVo cells IHC: 50-200 Positive control: Human colon cancer Predicted cell location: Cytoplasm
Reactivity:	Human
Host:	Rabbit
Isotype:	IgG
Clonality:	Polyclonal
Immunogen:	Fusion protein of human ITGAE
Formulation:	pH7.4 PBS, 0.05% NaN ₃ , 40% Glycerol
Concentration:	lot specific
Purification:	Antigen affinity purification
Conjugation:	Unconjugated
Storage:	Store at -20°C as received.
Stability:	Stable for 12 months from date of receipt.
Predicted Protein Size:	130 kDa
Gene Name:	integrin subunit alpha E
Database Link:	NP_002199 Entrez Gene 3682 Human P38570



[View online »](#)

Background:

Integrins are heterodimeric integral membrane proteins composed of an alpha chain and a beta chain. This gene encodes an I-domain-containing alpha integrin that undergoes post-translational cleavage in the extracellular domain, yielding disulfide-linked heavy and light chains. In combination with the beta 7 integrin, this protein forms the E-cadherin binding integrin known as the human mucosal lymphocyte-1 antigen. This protein is preferentially expressed in human intestinal intraepithelial lymphocytes (IEL), and in addition to a role in adhesion, it may serve as an accessory molecule for IEL activation.

Synonyms:

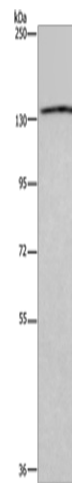
CD103; HUMINAE

Protein Families:

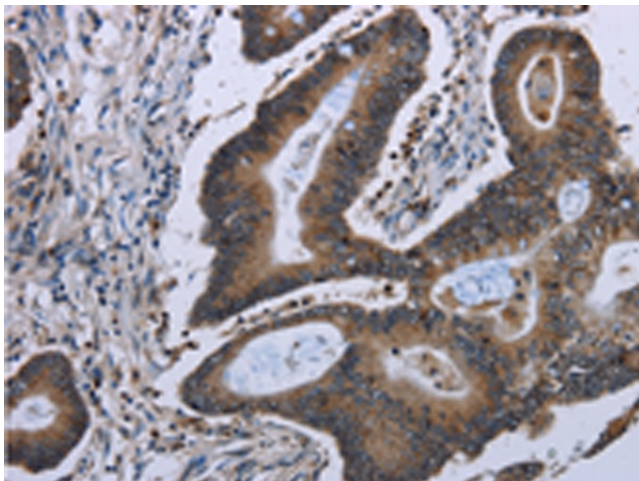
Druggable Genome, ES Cell Differentiation/IPS, Transmembrane

Protein Pathways:

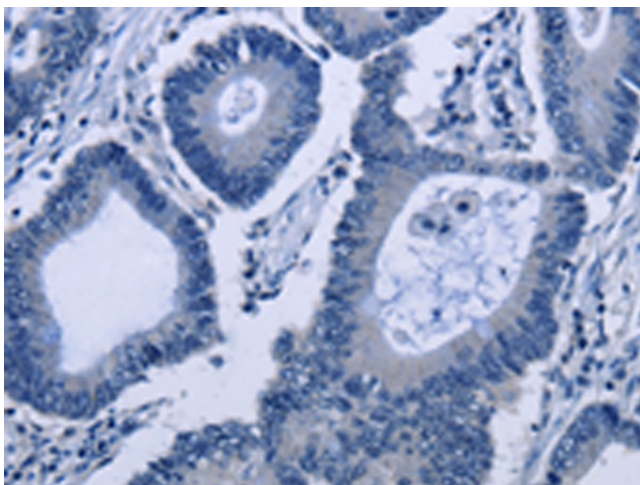
Regulation of actin cytoskeleton

Product images:


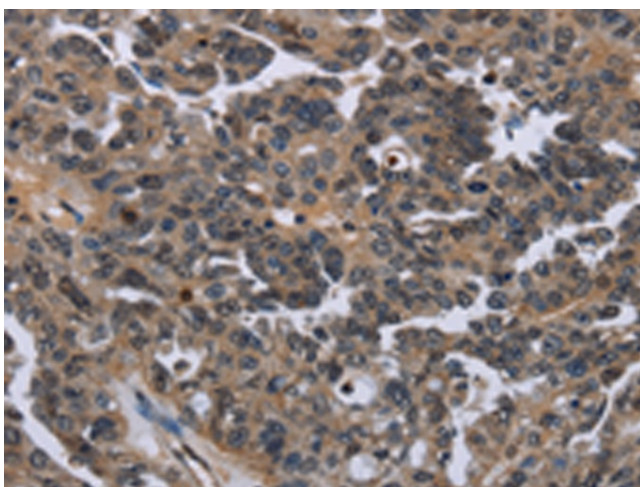
Gel: 6%SDS-PAGE
 Lysate: 40 µg
 Lane: LoVo cells
 Primary antibody: TA350096 (ITGAE Antibody) at dilution 1/550
 Secondary antibody: Goat anti rabbit IgG at 1/8000 dilution
 Exposure time: 3 minutes



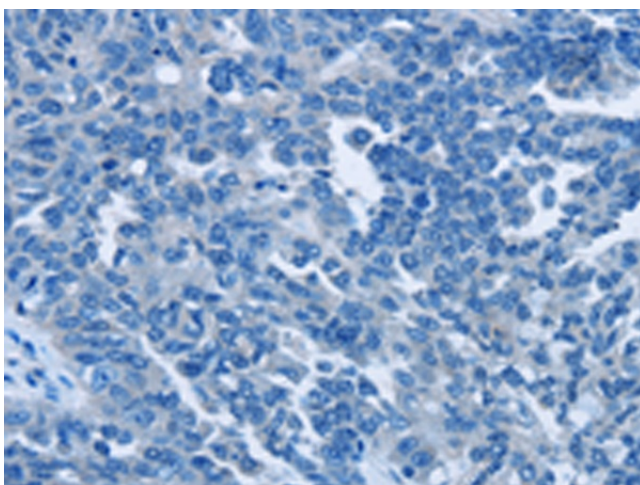
Immunohistochemistry of paraffin-embedded Human colon cancer tissue using TA350096 (ITGAE Antibody) at dilution 1/50 (Original magnification: ×200)



Immunohistochemistry of paraffin-embedded Human colon cancer tissue using TA350096 (ITGAE Antibody) at dilution 1/50, treated with fusion protein. (Original magnification: ×200)



Immunohistochemistry of paraffin-embedded Human ovarian cancer tissue using TA350096 (ITGAE Antibody) at dilution 1/50 (Original magnification: ×200)



Immunohistochemistry of paraffin-embedded Human ovarian cancer tissue using TA350096 (ITGAE Antibody) at dilution 1/50, treated with fusion protein. (Original magnification: ×200)