

Product datasheet for **TA350091**

IMPDH2 Rabbit Polyclonal Antibody

Product data:

Product Type:	Primary Antibodies
Applications:	IHC, WB
Recommended Dilution:	WB: 500-2000 WB positive control: A549 cells IHC: 50-200 Positive control: Human lung cancer Predicted cell location: Cytoplasm or Nucleus
Reactivity:	Human, Mouse, Rat
Host:	Rabbit
Isotype:	IgG
Clonality:	Polyclonal
Immunogen:	Fusion protein of human IMPDH2
Formulation:	pH7.4 PBS, 0.05% NaN ₃ , 40% Glycerol
Concentration:	lot specific
Purification:	Antigen affinity purification
Conjugation:	Unconjugated
Storage:	Store at -20°C as received.
Stability:	Stable for 12 months from date of receipt.
Predicted Protein Size:	56 kDa
Gene Name:	IMP (inosine 5'-monophosphate) dehydrogenase 2
Database Link:	NP_000875 Entrez Gene 23918 Mouse Entrez Gene 301005 Rat Entrez Gene 3615 Human P12268



[View online »](#)

Background:

This gene encodes the rate-limiting enzyme in the de novo guanine nucleotide biosynthesis. It is thus involved in maintaining cellular guanine deoxy- and ribonucleotide pools needed for DNA and RNA synthesis. The encoded protein catalyzes the NAD-dependent oxidation of inosine-5'-monophosphate into xanthine-5'-monophosphate, which is then converted into guanosine-5'-monophosphate. This gene is up-regulated in some neoplasms, suggesting it may play a role in malignant transformation.

Synonyms:

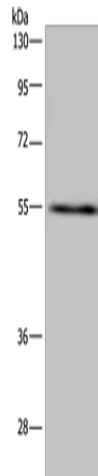
IMPD2; IMPDH-II

Protein Families:

Druggable Genome

Protein Pathways:

Drug metabolism - other enzymes, Metabolic pathways, Purine metabolism

Product images:

Gel: 8%SDS-PAGE

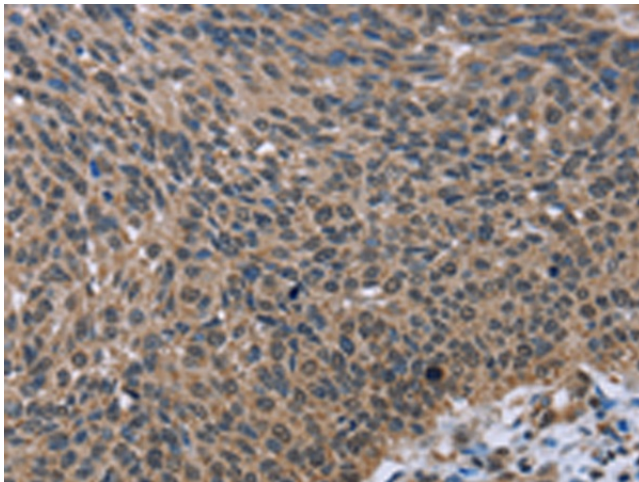
Lysate: 40 µg

Lane: A549 cells

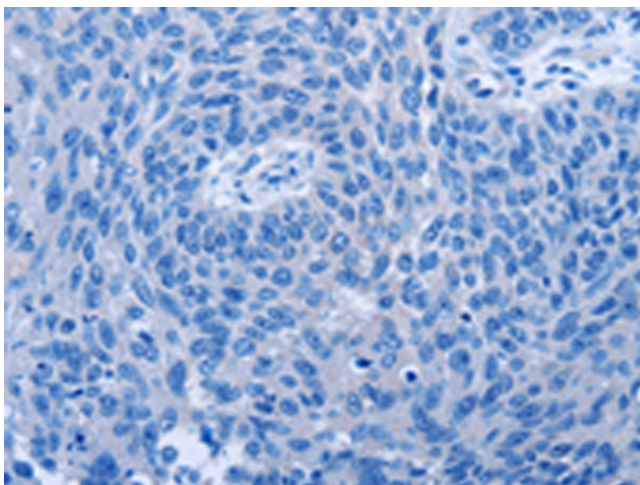
Primary antibody: TA350091 (IMPDH2 Antibody)
at dilution 1/650

Secondary antibody: Goat anti rabbit IgG at
1/8000 dilution

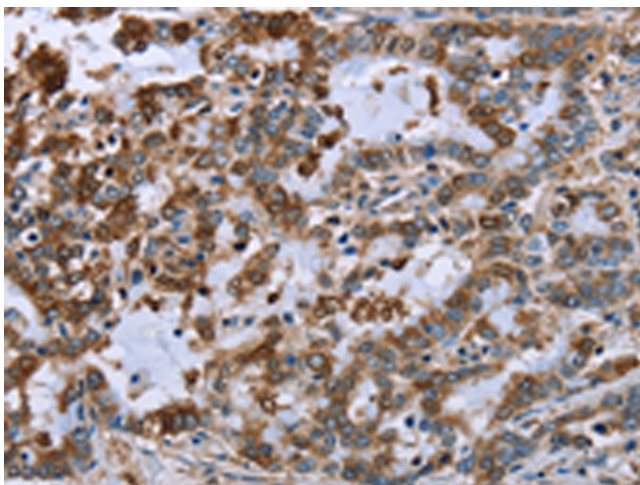
Exposure time: 3 minutes



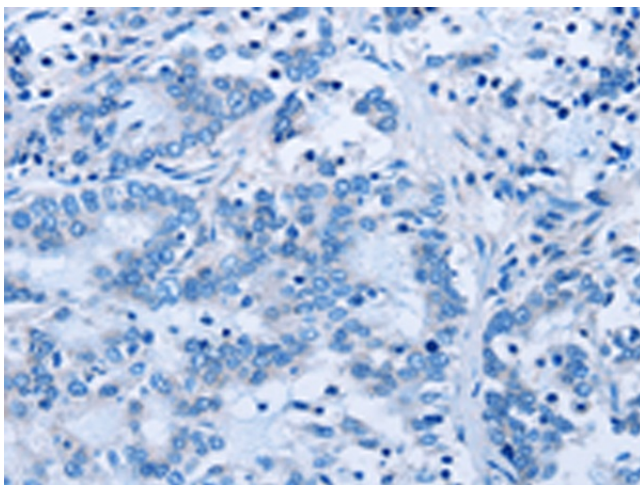
Immunohistochemistry of paraffin-embedded
Human lung cancer tissue using TA350091
(IMPDH2 Antibody) at dilution 1/60 (Original
magnification: ×200)



Immunohistochemistry of paraffin-embedded Human lung cancer tissue using TA350091 (IMPDH2 Antibody) at dilution 1/60, treated with fusion protein. (Original magnification: ×200)



Immunohistochemistry of paraffin-embedded Human liver cancer tissue using TA350091 (IMPDH2 Antibody) at dilution 1/60 (Original magnification: ×200)



Immunohistochemistry of paraffin-embedded Human liver cancer tissue using TA350091 (IMPDH2 Antibody) at dilution 1/60, treated with fusion protein. (Original magnification: ×200)