

Product datasheet for **TA350090**

IL31RA Rabbit Polyclonal Antibody

Product data:

Product Type:	Primary Antibodies
Applications:	IHC, WB
Recommended Dilution:	WB: 200-1000 WB positive control: Jurkat cells IHC: 25-100 Positive control: Human prostate cancer Predicted cell location: Cytoplasm
Reactivity:	Human
Host:	Rabbit
Isotype:	IgG
Clonality:	Polyclonal
Immunogen:	Fusion protein of human IL31RA
Formulation:	pH7.4 PBS, 0.05% NaN ₃ , 40% Glycerol
Concentration:	lot specific
Purification:	Antigen affinity purification
Conjugation:	Unconjugated
Storage:	Store at -20°C as received.
Stability:	Stable for 12 months from date of receipt.
Predicted Protein Size:	83 kDa
Gene Name:	interleukin 31 receptor A
Database Link:	NP_620586 Entrez Gene 133396 Human Q8NI17

Background: The protein encoded by this gene belongs to the type I cytokine receptor family. This receptor, with homology to gp130, is expressed on monocytes, and is involved in IL-31 signaling via activation of STAT-3 and STAT-5. It functions either as a monomer, or as part of a receptor complex with oncostatin M receptor (OSMR). Several alternatively spliced transcript variants encoding different isoforms have been noted for this gene.

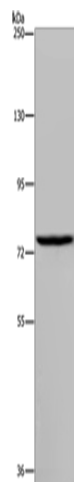


[View online »](#)

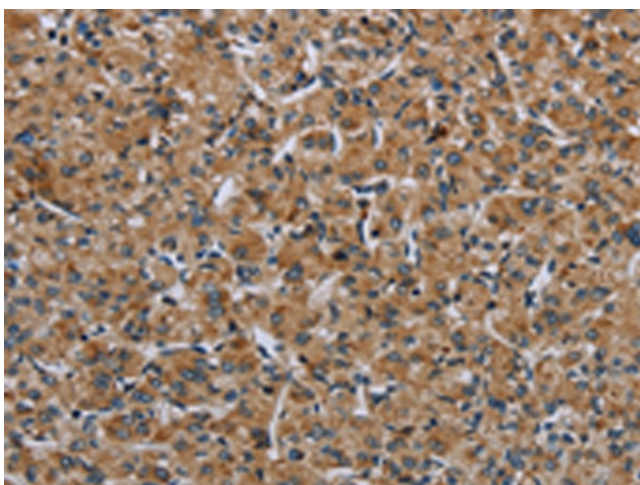
Synonyms: CRL; CRL3; GLM-R; GLMR; GPL; hGLM-R; IL-31RA; PLCA2; PRO21384

Protein Families: Druggable Genome, Transmembrane

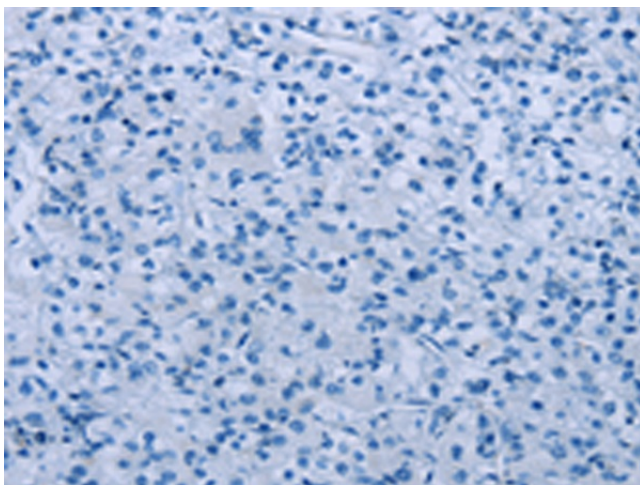
Product images:



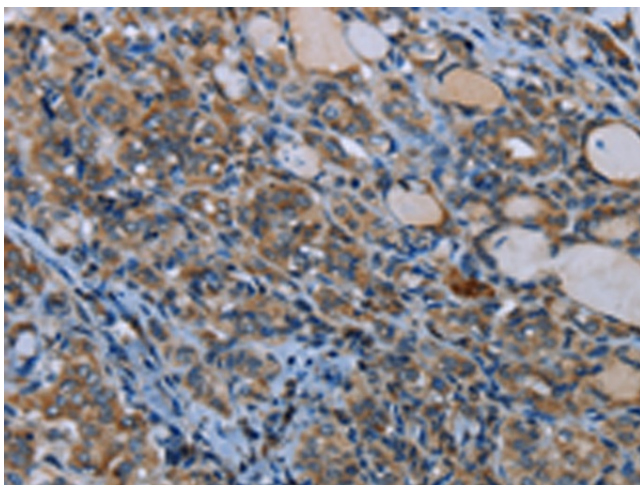
Gel: 6%SDS-PAGE
Lysate: 40 μ g
Lane: Jurkat cells
Primary antibody: TA350090 (IL31RA Antibody) at dilution 1/250
Secondary antibody: Goat anti rabbit IgG at 1/8000 dilution
Exposure time: 10 minutes



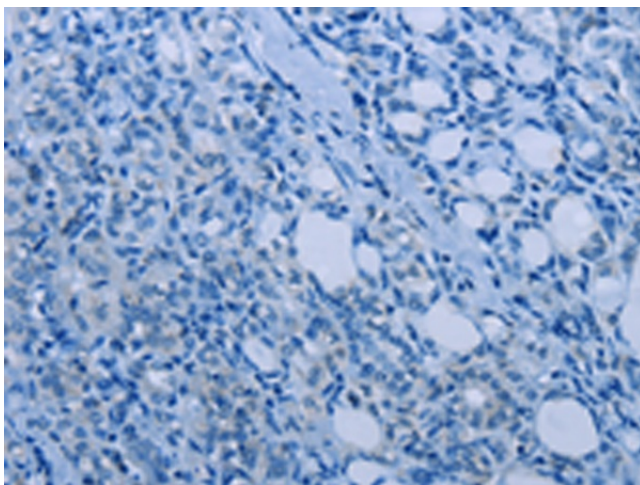
Immunohistochemistry of paraffin-embedded Human prostate cancer tissue using TA350090 (IL31RA Antibody) at dilution 1/30 (Original magnification: \times 200)



Immunohistochemistry of paraffin-embedded Human prostate cancer tissue using TA350090 (IL31RA Antibody) at dilution 1/30, treated with fusion protein. (Original magnification: ×200)



Immunohistochemistry of paraffin-embedded Human thyroid cancer tissue using TA350090 (IL31RA Antibody) at dilution 1/30 (Original magnification: ×200)



Immunohistochemistry of paraffin-embedded Human thyroid cancer tissue using TA350090 (IL31RA Antibody) at dilution 1/30, treated with fusion protein. (Original magnification: ×200)