

## Product datasheet for **TA350086**

### IL22 RA2 (IL22RA2) Rabbit Polyclonal Antibody

#### Product data:

|                         |   |
|-------------------------|---|
| Product Type:           | Primary Antibodies  |
| Applications:           | IHC, WB   |
| Recommended Dilution:   | WB: 500-2000<br>WB positive control: Mouse brain tissue lysate<br>IHC: 100-300<br>Positive control: Human tonsil<br>Predicted cell location: Secreted |
| Reactivity:             | Human, Mouse  |
| Host:                   | Rabbit  |
| Isotype:                | IgG   |
| Clonality:              | Polyclonal  |
| Immunogen:              | Fusion protein of human IL22RA2   |
| Formulation:            | pH7.4 PBS, 0.05% NaN <sub>3</sub> , 40% Glycerol  |
| Concentration:          | lot specific  |
| Purification:           | Antigen affinity purification   |
| Conjugation:            | Unconjugated  |
| Storage:                | Store at -20°C as received.   |
| Stability:              | Stable for 12 months from date of receipt.  |
| Predicted Protein Size: | 31 kDa  |
| Gene Name:              | interleukin 22 receptor subunit alpha 2   |
| Database Link:          | <a href="#">NP_851826</a><br><a href="#">Entrez Gene 116379 Human</a><br><a href="#">Q969J5</a>   |



[View online »](#)

**Background:** This gene encodes a member of the class II cytokine receptor family. The encoded soluble protein specifically binds to and inhibits interleukin 22 activity by blocking the interaction of interleukin 22 with its cell surface receptor. The encoded protein may be important in the regulation of inflammatory response, and has been implicated in the regulation of tumorigenesis in the colon. Alternative splicing results in multiple transcript variants encoding distinct isoforms.

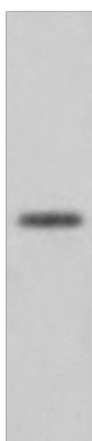
**Synonyms:** CRF2-10; CRF2-S1; CRF2X; IL-22BP; IL-22R-alpha-2; IL-22RA2; ZCYTOR16

**Protein Families:** Druggable Genome, Secreted Protein

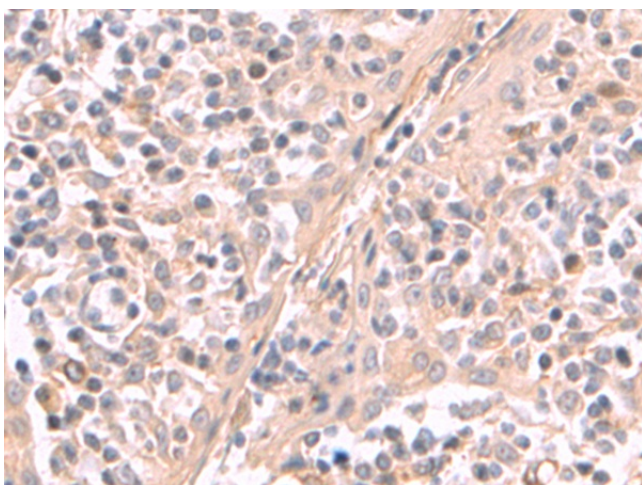
**Protein Pathways:** Cytokine-cytokine receptor interaction, Jak-STAT signaling pathway

### Product images:

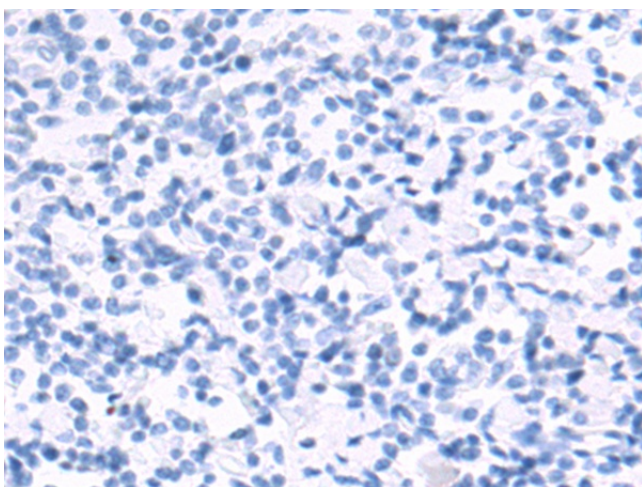
kDa  
95 —  
72 —  
55 —  
36 —  
28 —  
17 —  
10 —



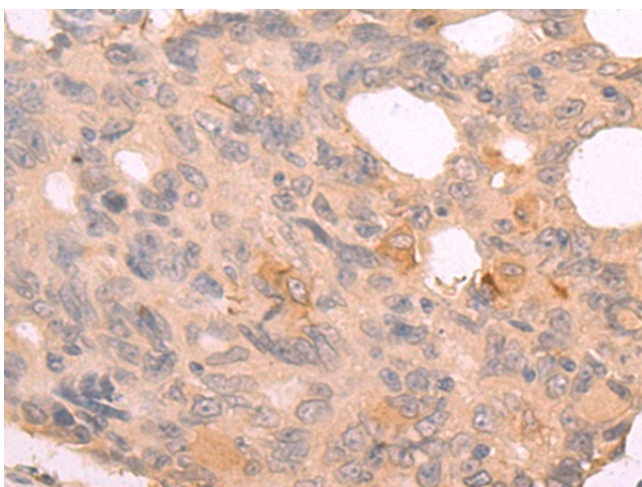
Gel: 12%SDS-PAGE  
Lysate: 40 µg  
Lane: Mouse brain tissue lysate  
Primary antibody: TA350086 (IL22RA2 Antibody)  
at dilution 1/550  
Secondary antibody: Goat anti rabbit IgG at  
1/5000 dilution  
Exposure time: 20 seconds



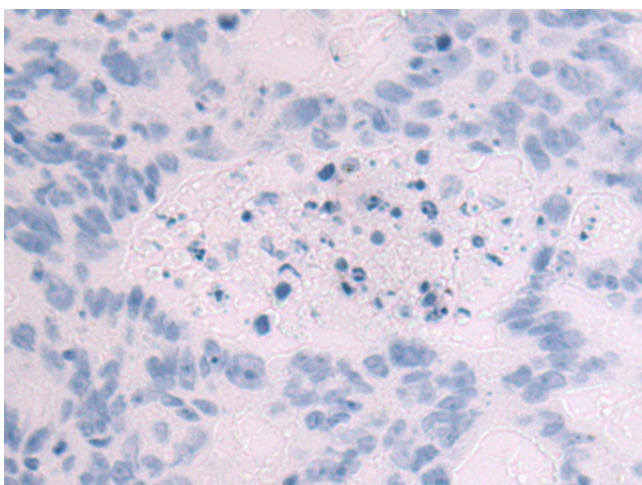
Immunohistochemistry of paraffin-embedded  
Human tonsil tissue using TA350086 (IL22RA2  
Antibody) at dilution 1/130 (Original  
magnification: ×200)



Immunohistochemistry of paraffin-embedded Human tonsil tissue using TA350086 (IL22RA2 Antibody) at dilution 1/130, treated with fusion protein. (Original magnification: ×200)



Immunohistochemistry of paraffin-embedded Human colorectal cancer tissue using TA350086 (IL22RA2 Antibody) at dilution 1/130 (Original magnification: ×200)



Immunohistochemistry of paraffin-embedded Human colorectal cancer tissue using TA350086 (IL22RA2 Antibody) at dilution 1/130, treated with fusion protein. (Original magnification: ×200)