

Product datasheet for **TA350084**

Alpha Taxilin (TXLNA) Rabbit Polyclonal Antibody

Product data:

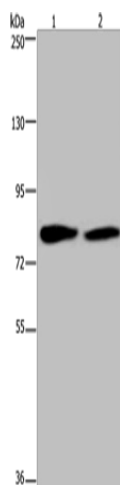
Product Type:	Primary Antibodies
Applications:	IHC, WB
Recommended Dilution:	WB: 500-2000 WB positive control: K562 and 293T cells IHC: 25-100 Positive control: Human prostate cancer Predicted cell location: Cytoplasm
Reactivity:	Human, Mouse
Host:	Rabbit
Isotype:	IgG
Clonality:	Polyclonal
Immunogen:	Fusion protein of human TXLNA
Formulation:	pH7.4 PBS, 0.05% NaN ₃ , 40% Glycerol
Concentration:	lot specific
Purification:	Antigen affinity purification
Conjugation:	Unconjugated
Storage:	Store at -20°C as received.
Stability:	Stable for 12 months from date of receipt.
Predicted Protein Size:	62 kDa
Gene Name:	taxilin alpha
Database Link:	NP_787048 Entrez Gene 200081 Human P40222
Background:	α -taxilin is a novel binding partner of the syntaxin family which is implicated in intracellular vesicle trafficking. Through its C-terminal coiled-coil region, α -taxilin interacts with the nascent polypeptide-associated complex (NAC), which acts as a transcriptional coactivator.
Synonyms:	IL14; TXLN



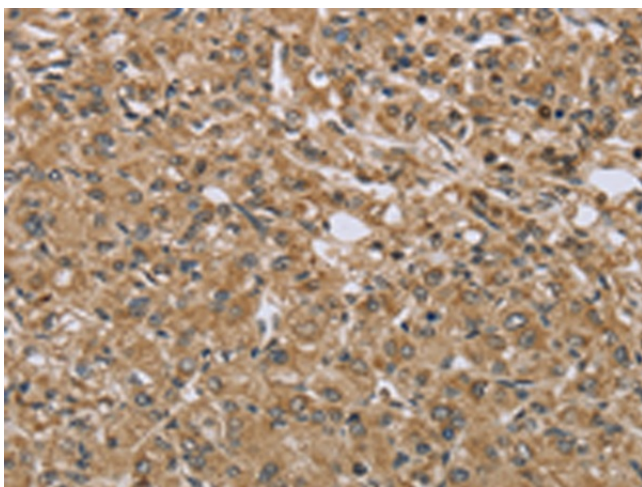
[View online »](#)

Protein Families: Druggable Genome

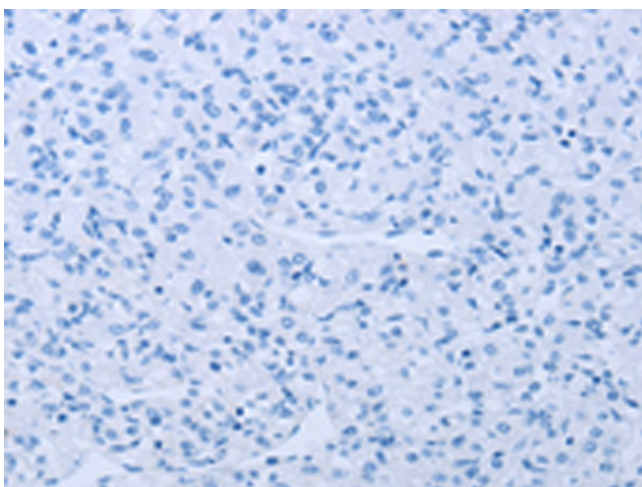
Product images:



Gel: 6%SDS-PAGE
Lysate: 40 μ g
Lane 1-2: K562 cells
293T cells
Primary antibody: TA350084 (TXLNA Antibody) at dilution 1/350
Secondary antibody: Goat anti rabbit IgG at 1/8000 dilution
Exposure time: 10 seconds



Immunohistochemistry of paraffin-embedded Human prostate cancer tissue using TA350084 (TXLNA Antibody) at dilution 1/30 (Original magnification: \times 200)



Immunohistochemistry of paraffin-embedded Human prostate cancer tissue using TA350084 (TXLNA Antibody) at dilution 1/30, treated with fusion protein. (Original magnification: ×200)