

Product datasheet for **TA350082S**

IKBKE Rabbit Polyclonal Antibody

Product data:

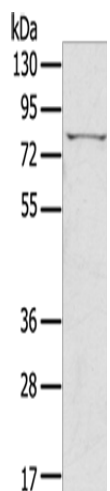
Product Type:	Primary Antibodies
Applications:	IHC, WB
Recommended Dilution:	WB: 200-1000 WB positive control: Raji cells IHC: 50-200 Positive control: Human prostate cancer Predicted cell location: Cytoplasm or Nucleus
Reactivity:	Human, Mouse
Host:	Rabbit
Isotype:	IgG
Clonality:	Polyclonal
Immunogen:	Fusion protein of human IKBKE
Formulation:	pH7.4 PBS, 0.05% NaN ₃ , 40% Glycerol
Purification:	Antigen affinity purification
Conjugation:	Unconjugated
Storage:	Store at -20°C as received.
Stability:	Stable for 12 months from date of receipt.
Predicted Protein Size:	80 kDa
Gene Name:	inhibitor of kappa light polypeptide gene enhancer in B-cells, kinase epsilon
Database Link:	NP_054721 Entrez Gene 56489 Mouse Entrez Gene 9641 Human Q14164
Background:	IKBKE is a noncanonical I-kappa-B (see MIM 164008) kinase (IKK) that is essential for regulating antiviral signaling pathways. IKBKE has also been identified as a breast cancer (MIM 114480) oncogene and is amplified and overexpressed in over 30% of breast carcinomas and breast cancer cell lines (Hutti et al., 2009 [PubMed 19481526]).
Synonyms:	IKK-E; IKK-i; IKKE; IKKI
Protein Families:	Druggable Genome, Protein Kinase



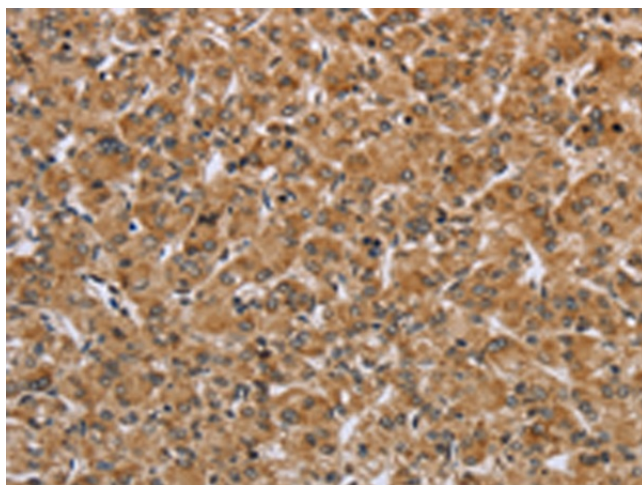
[View online »](#)

Protein Pathways: Cytosolic DNA-sensing pathway, RIG-I-like receptor signaling pathway, Toll-like receptor signaling pathway

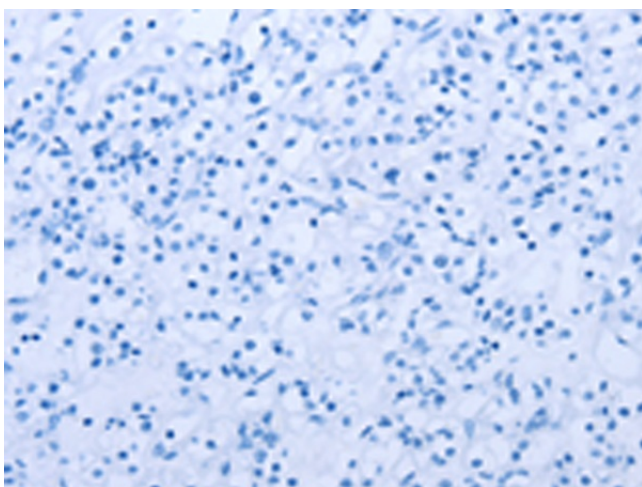
Product images:



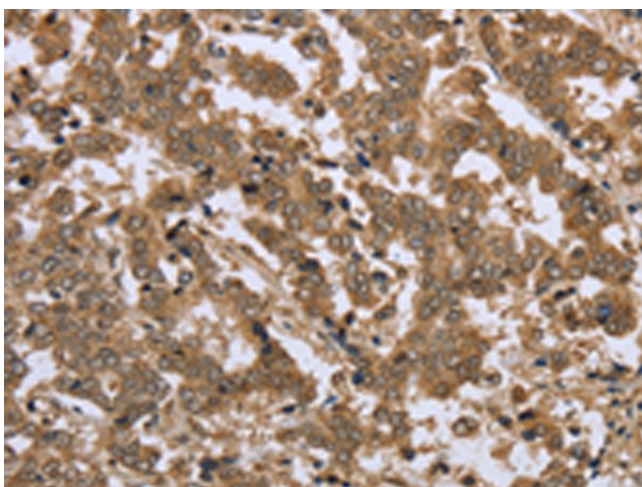
Gel: 6%SDS-PAGE
Lysate: 50 μ g
Lane: Raji cells
Primary antibody: [TA350082] (IKBKE Antibody) at dilution 1/400
Secondary antibody: Goat anti rabbit IgG at 1/8000 dilution
Exposure time: 30 seconds



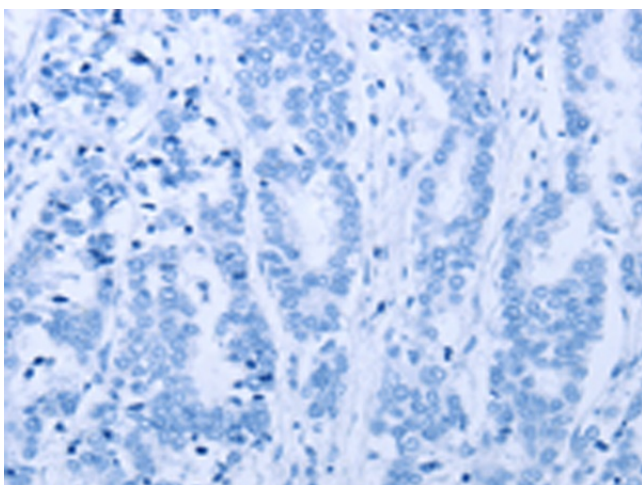
Immunohistochemistry of paraffin-embedded Human prostate cancer tissue using [TA350082] (IKBKE Antibody) at dilution 1/25 (Original magnification: \times 200)



Immunohistochemistry of paraffin-embedded Human prostate cancer tissue using [TA350082] (IKBKE Antibody) at dilution 1/25, treated with fusion protein. (Original magnification: ×200)



Immunohistochemistry of paraffin-embedded Human liver cancer tissue using [TA350082] (IKBKE Antibody) at dilution 1/25 (Original magnification: ×200)



Immunohistochemistry of paraffin-embedded Human liver cancer tissue using [TA350082] (IKBKE Antibody) at dilution 1/25, treated with fusion protein. (Original magnification: ×200)