

Product datasheet for **TA350079**

CCN3 (NOV) Rabbit Polyclonal Antibody

Product data:

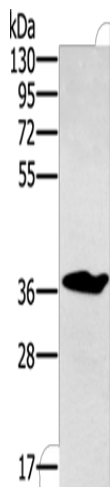
Product Type:	Primary Antibodies
Applications:	IHC, WB
Recommended Dilution:	WB: 500-2000 WB positive control: Mouse liver tissue IHC: 25-100 Positive control: Human ovarian cancer Predicted cell location: Cytoplasm
Reactivity:	Human, Mouse, Rat
Host:	Rabbit
Isotype:	IgG
Clonality:	Polyclonal
Immunogen:	Fusion protein of human NOV
Formulation:	pH7.4 PBS, 0.05% NaN ₃ , 40% Glycerol
Concentration:	lot specific
Purification:	Antigen affinity purification
Conjugation:	Unconjugated
Storage:	Store at -20°C as received.
Stability:	Stable for 12 months from date of receipt.
Predicted Protein Size:	39 kDa
Gene Name:	nephroblastoma overexpressed
Database Link:	NP_002505 Entrez Gene 18133 Mouse Entrez Gene 81526 Rat Entrez Gene 4856 Human P48745
Background:	The protein encoded by this gene is a small secreted cysteine-rich protein and a member of the CCN family of regulatory proteins. CNN family proteins associate with the extracellular matrix and play an important role in cardiovascular and skeletal development, fibrosis and cancer development.
Synonyms:	CCN3; IBP-9; IGFBP-9; IGFBP9; NOVh



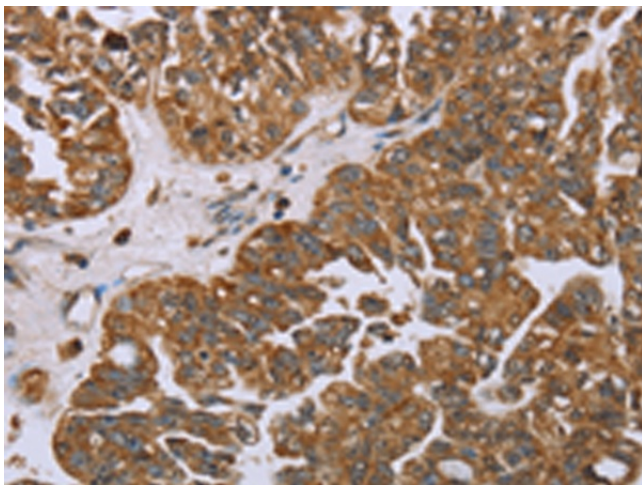
[View online »](#)

Protein Families: ES Cell Differentiation/IPS, Secreted Protein

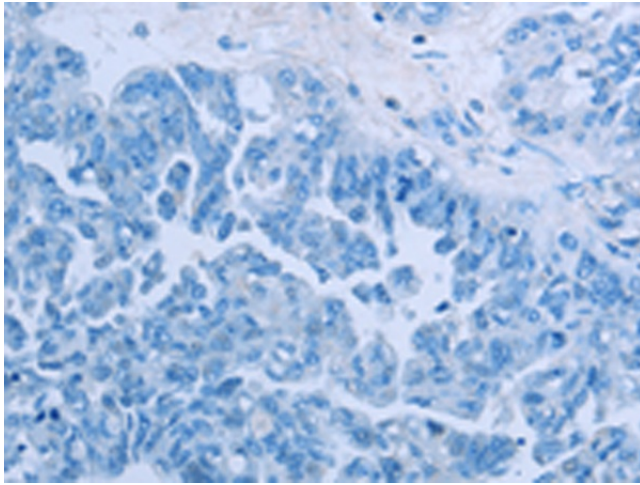
Product images:



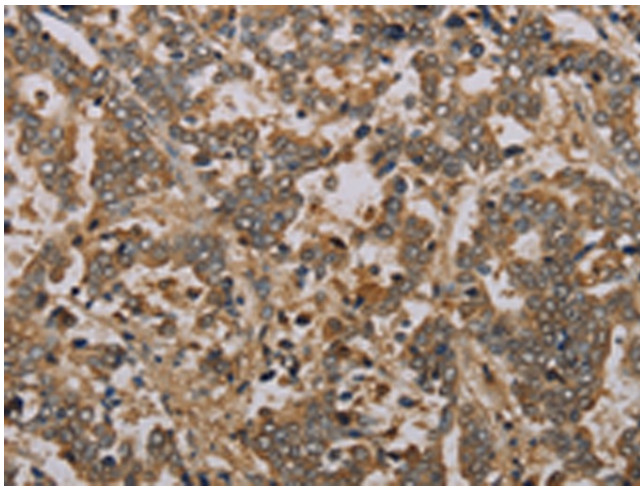
Gel: 8%SDS-PAGE
Lysate: 40 μ g
Lane: Mouse liver tissue
Primary antibody: TA350079 (CCN3 Antibody) at dilution 1/300
Secondary antibody: Goat anti rabbit IgG at 1/8000 dilution
Exposure time: 3 minutes



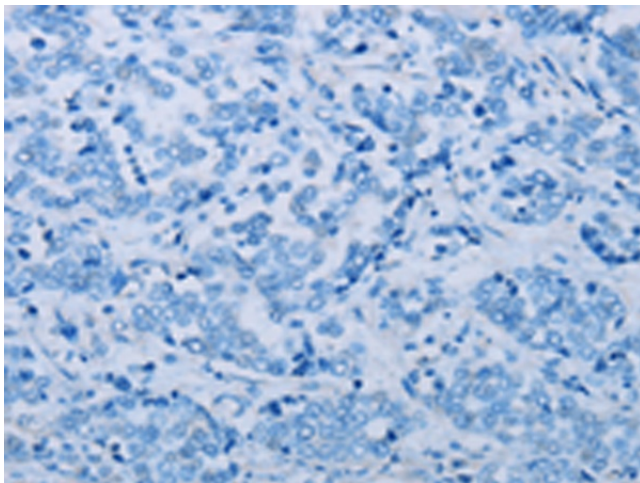
Immunohistochemistry of paraffin-embedded Human ovarian cancer tissue using TA350079 (CCN3 Antibody) at dilution 1/25 (Original magnification: \times 200)



Immunohistochemistry of paraffin-embedded Human ovarian cancer tissue using TA350079 (CCN3 Antibody) at dilution 1/25, treated with fusion protein. (Original magnification: $\times 200$)



Immunohistochemistry of paraffin-embedded Human liver cancer tissue using TA350079 (CCN3 Antibody) at dilution 1/25 (Original magnification: $\times 200$)



Immunohistochemistry of paraffin-embedded Human liver cancer tissue using TA350079 (CCN3 Antibody) at dilution 1/25, treated with fusion protein. (Original magnification: $\times 200$)