

Product datasheet for **TA350070S**

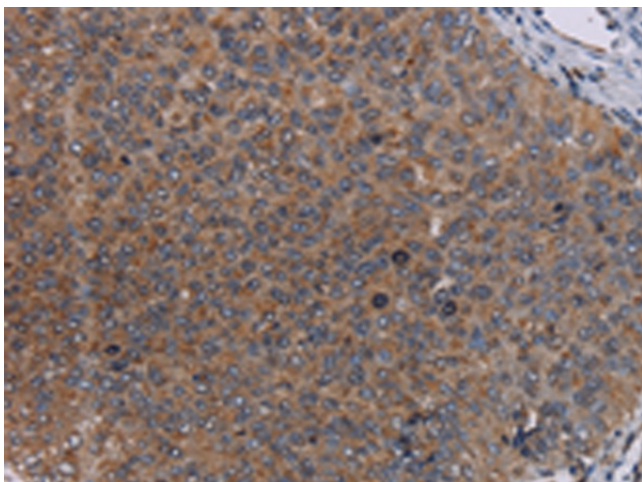
Hormone sensitive lipase (LIPE) Rabbit Polyclonal Antibody

Product data:

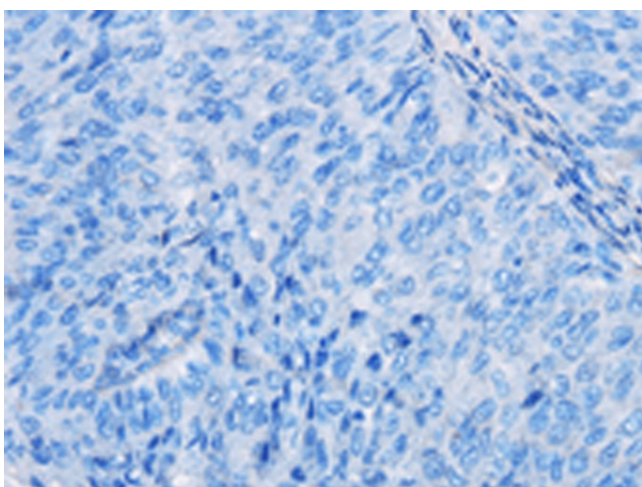
Product Type:	Primary Antibodies
Applications:	IHC
Recommended Dilution:	IHC: 50-200 Positive control: Human renal cancer Predicted cell location: Cytoplasm
Reactivity:	Human
Host:	Rabbit
Isotype:	IgG
Clonality:	Polyclonal
Immunogen:	Fusion protein of human LIPE
Formulation:	pH7.4 PBS, 0.05% NaN ₃ , 40% Glycerol
Purification:	Antigen affinity purification
Conjugation:	Unconjugated
Storage:	Store at -20°C as received.
Stability:	Stable for 12 months from date of receipt.
Gene Name:	lipase E, hormone sensitive type
Database Link:	NP_005348 Entrez Gene 3991 Human Q05469
Background:	The protein encoded by this gene has a long and a short form, generated by use of alternative translational start codons. The long form is expressed in steroidogenic tissues such as testis, where it converts cholesteryl esters to free cholesterol for steroid hormone production. The short form is expressed in adipose tissue, among others, where it hydrolyzes stored triglycerides to free fatty acids.
Synonyms:	AOMS4; FPLD6; HSL; LHS
Protein Pathways:	Insulin signaling pathway



[View online »](#)

Product images:

Immunohistochemistry of paraffin-embedded Human renal cancer tissue using [TA350070] (LIPE Antibody) at dilution 1/50 (Original magnification: $\times 200$)



Immunohistochemistry of paraffin-embedded Human renal cancer tissue using [TA350070] (LIPE Antibody) at dilution 1/50, treated with fusion protein. (Original magnification: $\times 200$)