

## Product datasheet for **TA350063**

### HSD17B6 Rabbit Polyclonal Antibody

#### Product data:

Product Type:	Primary Antibodies
Applications:	IHC, WB
Recommended Dilution:	WB: 200-1000 WB positive control: Mouse liver tissue IHC: 25-100 Positive control: Human colon cancer Predicted cell location: Nucleus and Cytoplasm
Reactivity:	Human, Mouse
Host:	Rabbit
Isotype:	IgG
Clonality:	Polyclonal
Immunogen:	Fusion protein of human HSD17B6
Formulation:	pH7.4 PBS, 0.05% NaN <sub>3</sub> , 40% Glycerol
Concentration:	lot specific
Purification:	Antigen affinity purification
Conjugation:	Unconjugated
Storage:	Store at -20°C as received.
Stability:	Stable for 12 months from date of receipt.
Predicted Protein Size:	36 kDa
Gene Name:	hydroxysteroid (17-beta) dehydrogenase 6
Database Link:	<a href="#">NP_003716</a> <a href="#">Entrez Gene 27400 Mouse</a> <a href="#">Entrez Gene 8630 Human</a> <a href="#">O14756</a>

**Background:** The protein encoded by this gene has both oxidoreductase and epimerase activities and is involved in androgen catabolism. The oxidoreductase activity can convert 3 alpha-adiol to dihydrotestosterone, while the epimerase activity can convert androsterone to epi-androsterone. Both reactions use NAD<sup>+</sup> as the preferred cofactor. This gene is a member of the retinol dehydrogenase family.

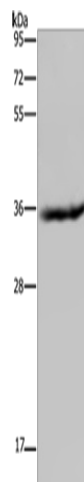


[View online »](#)

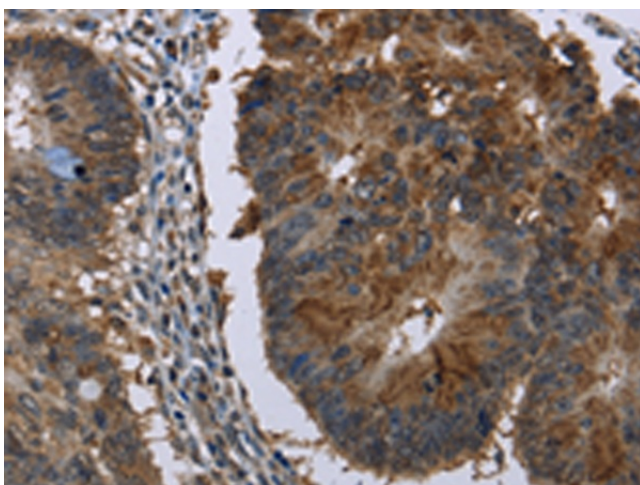
Synonyms: HSE; RODH; SDR9C6

Protein Families: Druggable Genome

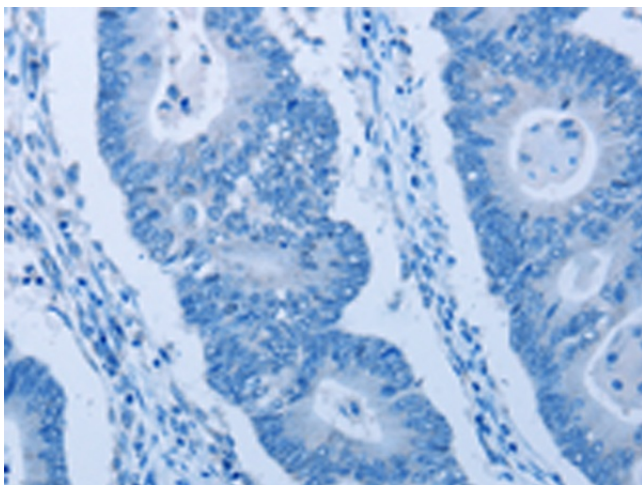
### Product images:



Gel: 10%SDS-PAGE  
Lysate: 40  $\mu$ g  
Lane: Mouse liver tissue  
Primary antibody: TA350063 (HSD17B6 Antibody)  
at dilution 1/200  
Secondary antibody: Goat anti rabbit IgG at  
1/8000 dilution  
Exposure time: 1 minute



Immunohistochemistry of paraffin-embedded  
Human colon cancer tissue using TA350063  
(HSD17B6 Antibody) at dilution 1/20 (Original  
magnification:  $\times$ 200)



Immunohistochemistry of paraffin-embedded Human colon cancer tissue using TA350063 (HSD17B6 Antibody) at dilution 1/20, treated with fusion protein. (Original magnification: ×200)