

Product datasheet for **TA350057**

HSD17B8 Rabbit Polyclonal Antibody

Product data:

Product Type:	Primary Antibodies
Applications:	IHC, WB
Recommended Dilution:	WB: 500-2000 WB positive control: Human testis tissue IHC: 50-200 Positive control: Human liver cancer Predicted cell location: Cytoplasm
Reactivity:	Human, Mouse, Rat
Host:	Rabbit
Isotype:	IgG
Clonality:	Polyclonal
Immunogen:	Fusion protein of human HSD17B8
Formulation:	pH7.4 PBS, 0.05% NaN ₃ , 40% Glycerol
Concentration:	lot specific
Purification:	Antigen affinity purification
Conjugation:	Unconjugated
Storage:	Store at -20°C as received.
Stability:	Stable for 12 months from date of receipt.
Predicted Protein Size:	27 kDa
Gene Name:	hydroxysteroid (17-beta) dehydrogenase 8
Database Link:	NP_055049 Entrez Gene 7923 Human Q92506



[View online »](#)

Background:

In mice, the Ke6 protein is a 17-beta-hydroxysteroid dehydrogenase that can regulate the concentration of biologically active estrogens and androgens. It is preferentially an oxidative enzyme and inactivates estradiol, testosterone, and dihydrotestosterone. However, the enzyme has some reductive activity and can synthesize estradiol from estrone. The protein encoded by this gene is similar to Ke6 and is a member of the short-chain dehydrogenase superfamily. An alternatively spliced transcript of this gene has been detected, but the full-length nature of this variant has not been determined.

Synonyms:

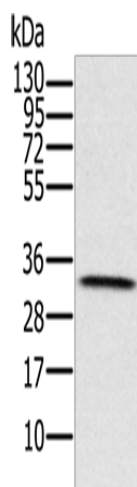
D6S2245E; dj1033B10.9; FABG; FABGL; H2-KE6; HKE6; KE6; RING2; SDR30C1

Protein Families:

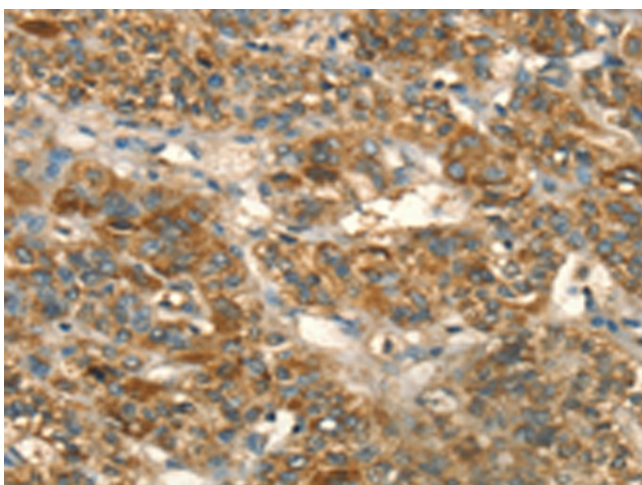
Druggable Genome

Protein Pathways:

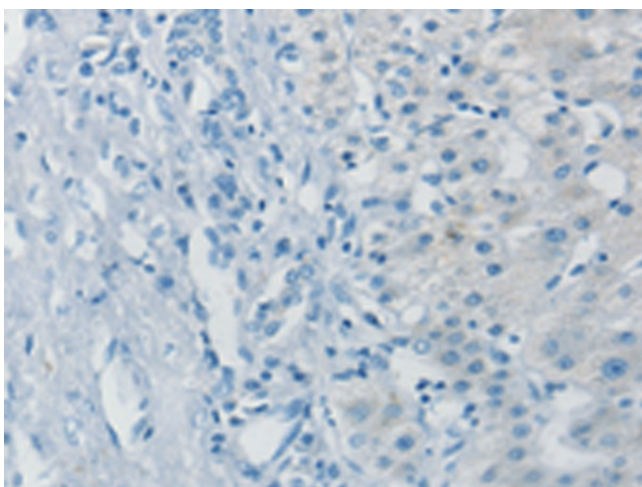
Androgen and estrogen metabolism, Metabolic pathways

Product images:

Gel: 12%SDS-PAGE
Lysate: 40 µg
Lane: Human testis tissue
Primary antibody: TA350057 (HSD17B8 Antibody) at dilution 1/650
Secondary antibody: Goat anti rabbit IgG at 1/8000 dilution
Exposure time: 20 seconds



Immunohistochemistry of paraffin-embedded Human liver cancer tissue using TA350057 (HSD17B8 Antibody) at dilution 1/55 (Original magnification: ×200)



Immunohistochemistry of paraffin-embedded Human liver cancer tissue using TA350057 (HSD17B8 Antibody) at dilution 1/55, treated with fusion protein. (Original magnification: ×200)