

## Product datasheet for **TA350056**

### Placental lactogen (CSH1) Rabbit Polyclonal Antibody

#### Product data:

Product Type:	Primary Antibodies
Applications:	IHC, WB
Recommended Dilution:	WB: 500-2000 WB positive control: Human breast infiltrative duct and placenta tissue IHC: 50-200 Positive control: Human liver cancer Predicted cell location: Cytoplasm
Reactivity:	Human
Host:	Rabbit
Isotype:	IgG
Clonality:	Polyclonal
Immunogen:	Fusion protein of human CSH1
Formulation:	pH7.4 PBS, 0.05% NaN <sub>3</sub> , 40% Glycerol
Concentration:	lot specific
Purification:	Antigen affinity purification
Conjugation:	Unconjugated
Storage:	Store at -20°C as received.
Stability:	Stable for 12 months from date of receipt.
Predicted Protein Size:	25 kDa
Gene Name:	chorionic somatomammotropin hormone 1
Database Link:	<a href="#">NP_072166</a> <a href="#">Entrez Gene 1442 Human</a> <a href="#">P0DML2</a>



[View online »](#)

**Background:**

The protein encoded by this gene is a member of the somatotropin/prolactin family of hormones and plays an important role in growth control. The gene is located at the growth hormone locus on chromosome 17 along with four other related genes in the same transcriptional orientation; an arrangement which is thought to have evolved by a series of gene duplications. Although the five genes share a remarkably high degree of sequence identity, they are expressed selectively in different tissues. Alternative splicing generates additional isoforms of each of the five growth hormones, leading to further diversity and potential for specialization.

**Synonyms:**

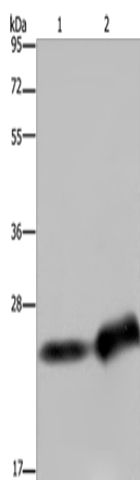
CSA; CSH2; CSMT; FLJ75407; PL

**Protein Families:**

Druggable Genome

**Protein Pathways:**

Jak-STAT signaling pathway, Neuroactive ligand-receptor interaction

**Product images:**

Gel: 10%SDS-PAGE

Lysate: 40 µg

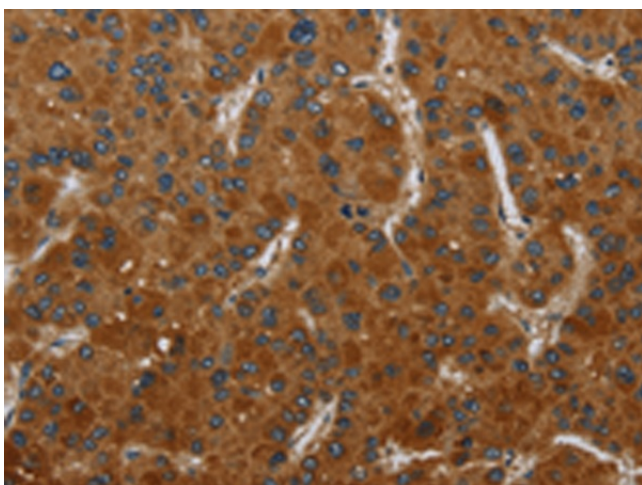
Lane 1-2: Human breast infiltrative duct tissue

Human placenta tissue

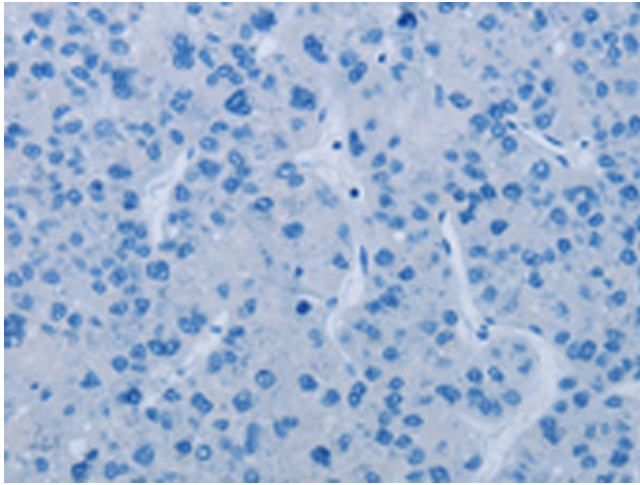
Primary antibody: TA350056 (CSH1 Antibody) at dilution 1/300

Secondary antibody: Goat anti rabbit IgG at 1/8000 dilution

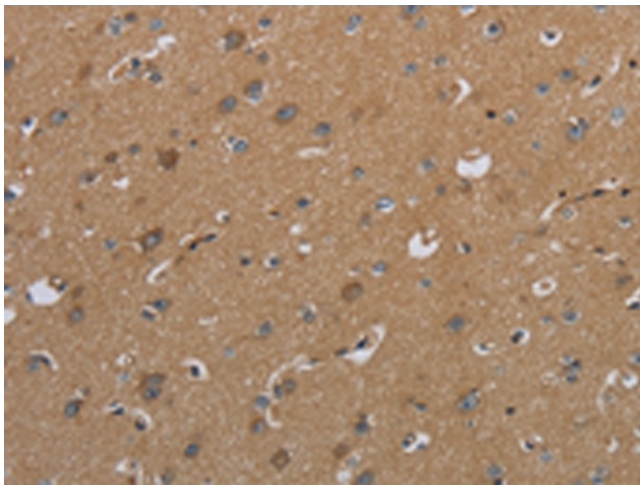
Exposure time: 10 seconds



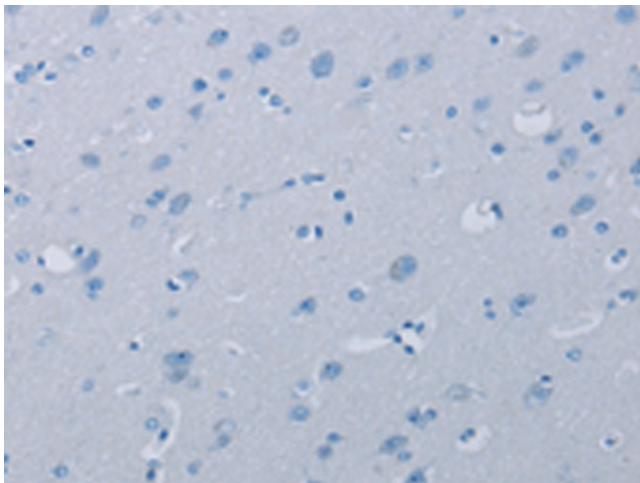
Immunohistochemistry of paraffin-embedded Human liver cancer tissue using TA350056 (CSH1 Antibody) at dilution 1/50 (Original magnification: ×200)



Immunohistochemistry of paraffin-embedded Human liver cancer tissue using TA350056 (CSH1 Antibody) at dilution 1/50, treated with fusion protein. (Original magnification: x200)



Immunohistochemistry of paraffin-embedded Human brain tissue using TA350056 (CSH1 Antibody) at dilution 1/50 (Original magnification: x200)



Immunohistochemistry of paraffin-embedded Human brain tissue using TA350056 (CSH1 Antibody) at dilution 1/50, treated with fusion protein. (Original magnification: x200)