

## Product datasheet for **TA350054S**

### 2 Hydroxy phytanoyl CoA lyase (HACL1) Rabbit Polyclonal Antibody

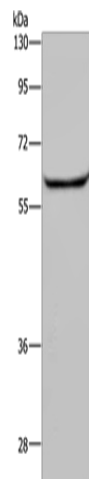
#### Product data:

Product Type:	Primary Antibodies
Applications:	IHC, WB
Recommended Dilution:	WB: 200-1000 WB positive control: Human testis tissue IHC: 50-200 Positive control: Human liver cancer Predicted cell location: Cytoplasm
Reactivity:	Human, Mouse, Rat
Host:	Rabbit
Isotype:	IgG
Clonality:	Polyclonal
Immunogen:	Fusion protein of human HACL1
Formulation:	pH7.4 PBS, 0.05% NaN <sub>3</sub> , 40% Glycerol
Purification:	Antigen affinity purification
Conjugation:	Unconjugated
Storage:	Store at -20°C as received.
Stability:	Stable for 12 months from date of receipt.
Predicted Protein Size:	64 kDa
Gene Name:	2-hydroxyacyl-CoA lyase 1
Database Link:	<a href="#">NP_036392</a> <a href="#">Entrez Gene 56794 MouseEntrez Gene 85255 RatEntrez Gene 26061 Human Q9UJ83</a>
Background:	HACL1 (2-hydroxyacyl-CoA lyase 1) is also known as HPCL or 2-HPCL (2-hydroxyphytanoyl-CoA lyase) and is a 578 amino acid protein. HACL1 is abundantly expressed in liver, and is also expressed in kidney, heart and skeletal muscle, where it is localized to peroxisomes. HACL1 functions in lipid metabolism as well as fatty acid metabolism and is able to form homotetramers.
Synonyms:	2-HPCL; HPCL; HPCL2; PHYH2

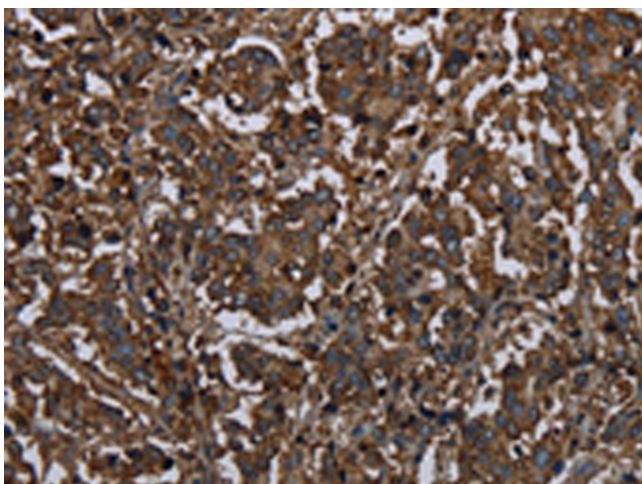


[View online »](#)

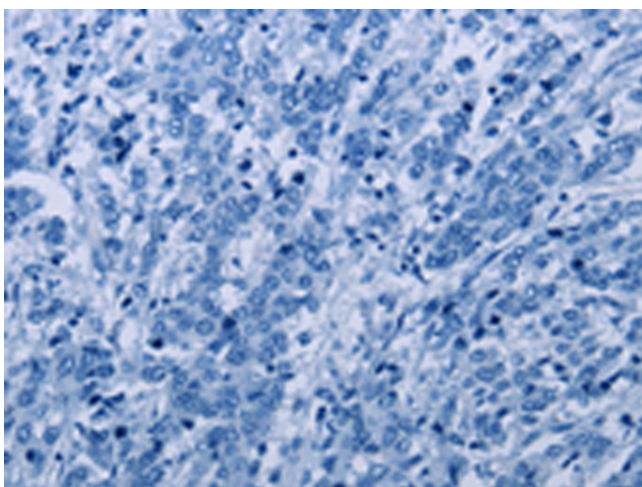
## Product images:



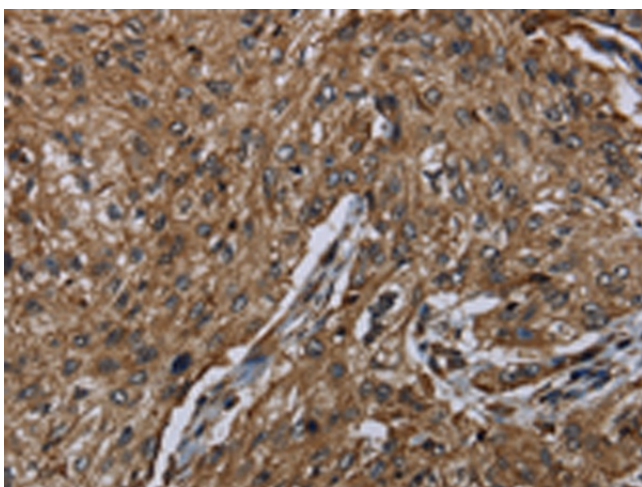
Gel: 8%SDS-PAGE  
Lysate: 40  $\mu$ g  
Lane: Human testis tissue  
Primary antibody: [TA350054] (HACL1 Antibody) at dilution 1/200  
Secondary antibody: Goat anti rabbit IgG at 1/8000 dilution  
Exposure time: 30 seconds



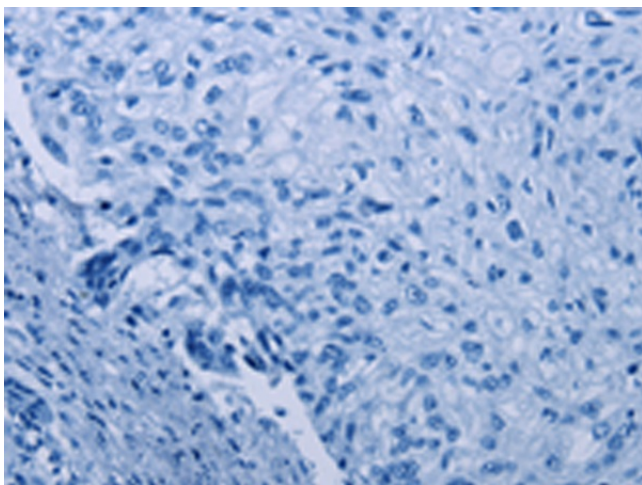
Immunohistochemistry of paraffin-embedded Human liver cancer tissue using [TA350054] (HACL1 Antibody) at dilution 1/20 (Original magnification:  $\times$ 200)



Immunohistochemistry of paraffin-embedded Human liver cancer tissue using [TA350054] (HACL1 Antibody) at dilution 1/20, treated with fusion protein. (Original magnification: ×200)



Immunohistochemistry of paraffin-embedded Human esophagus cancer tissue using [TA350054] (HACL1 Antibody) at dilution 1/20, treated with fusion protein. (Original magnification: ×200)



Immunohistochemistry of paraffin-embedded Human esophagus cancer tissue using [TA350054] (HACL1 Antibody) at dilution 1/20, treated with fusion protein. (Original magnification: ×200)