

Product datasheet for **TA350052**

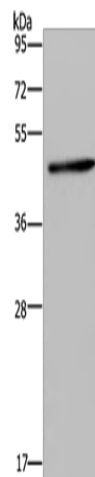
HOMER1 Rabbit Polyclonal Antibody

Product data:

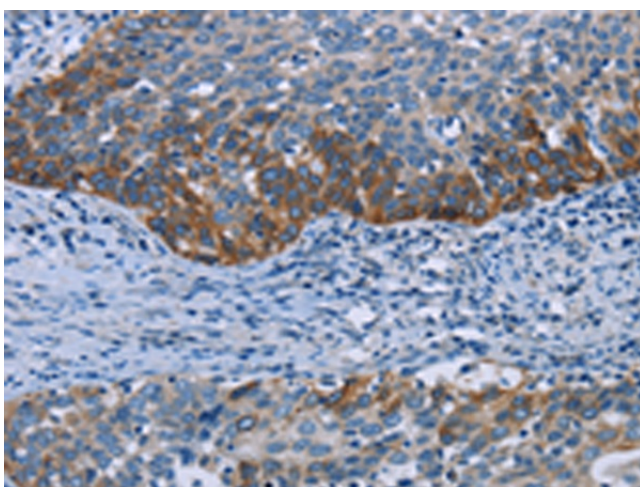
Product Type:	Primary Antibodies
Applications:	IHC, WB
Recommended Dilution:	WB: 500-2000 WB positive control: Mouse brain tissue IHC: 25-100 Positive control: Human cervical cancer Predicted cell location: Cytoplasm
Reactivity:	Human, Mouse, Rat
Host:	Rabbit
Isotype:	IgG
Clonality:	Polyclonal
Immunogen:	Fusion protein of human HOMER1
Formulation:	pH7.4 PBS, 0.05% NaN ₃ , 40% Glycerol
Concentration:	lot specific
Purification:	Antigen affinity purification
Conjugation:	Unconjugated
Storage:	Store at -20°C as received.
Stability:	Stable for 12 months from date of receipt.
Predicted Protein Size:	40 kDa
Gene Name:	homer scaffolding protein 1
Database Link:	NP_004263 Entrez Gene 26556 Mouse Entrez Gene 29546 Rat Entrez Gene 9456 Human Q86YM7
Background:	This gene encodes a member of the homer family of dendritic proteins. Members of this family regulate group 1 metabotropic glutamate receptor function.
Synonyms:	HOMER; HOMER1A; HOMER1B; HOMER1C; SYN47; Ves-1
Protein Families:	Druggable Genome



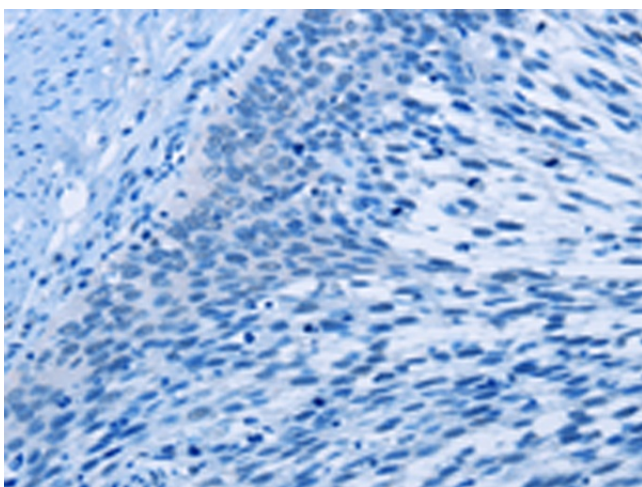
[View online »](#)

Product images:

Gel: 10%SDS-PAGE
Lysate: 40 μ g
Lane: Mouse brain tissue
Primary antibody: TA350052 (HOMER1 Antibody)
at dilution 1/300
Secondary antibody: Goat anti rabbit IgG at
1/8000 dilution
Exposure time: 10 seconds



Immunohistochemistry of paraffin-embedded
Human cervical cancer tissue using TA350052
(HOMER1 Antibody) at dilution 1/50 (Original
magnification: \times 200)



Immunohistochemistry of paraffin-embedded Human cervical cancer tissue using TA350052 (HOMER1 Antibody) at dilution 1/50, treated with fusion protein. (Original magnification: ×200)