

## Product datasheet for **TA350048**

### SETD7 Rabbit Polyclonal Antibody

#### Product data:

Product Type:	Primary Antibodies
Applications:	IHC
Recommended Dilution:	IHC: 50-200 Positive control: Human tonsil Predicted cell location: Nucleus and Cytoplasm
Reactivity:	Human, Mouse
Host:	Rabbit
Isotype:	IgG
Clonality:	Polyclonal
Immunogen:	Fusion protein of human SETD7
Formulation:	pH7.4 PBS, 0.05% NaN <sub>3</sub> , 40% Glycerol
Concentration:	lot specific
Purification:	Antigen affinity purification
Conjugation:	Unconjugated
Storage:	Store at -20°C as received.
Stability:	Stable for 12 months from date of receipt.
Gene Name:	SET domain containing lysine methyltransferase 7
Database Link:	<a href="#">NP_085151</a> <a href="#">Entrez Gene 73251 Mouse</a> <a href="#">Entrez Gene 80854 Human</a> <a href="#">Q8WTS6</a>

**Background:** The methylation of histones plays a pivotal role in the regulation of chromatin structure and gene expression. Histone methylation can occur on Arg or Lys residues, with an exquisite site selectivity for Lys methylation at specific positions in the N-termini of histones H3 and H4. SET7/9, a histone methyltransferase (HMTase), which transfers methyl groups to Lys4 of histone H3, forms a complex with S-adenosyl-L-methionine. This complex contains an active site consisting of a binding pocket where an AdoMet molecule in an unusual conformation binds, a narrow substrate-specific channel that only unmethylated lysine residues can access and a catalytic tyrosine residue.



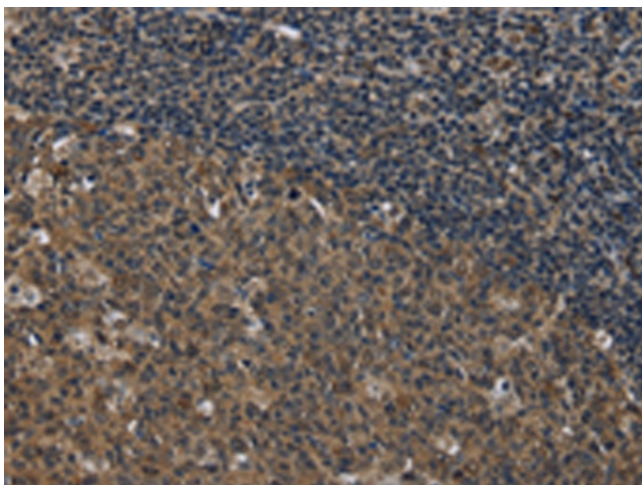
[View online »](#)

Synonyms: 9; KMT7; SET7; SET9

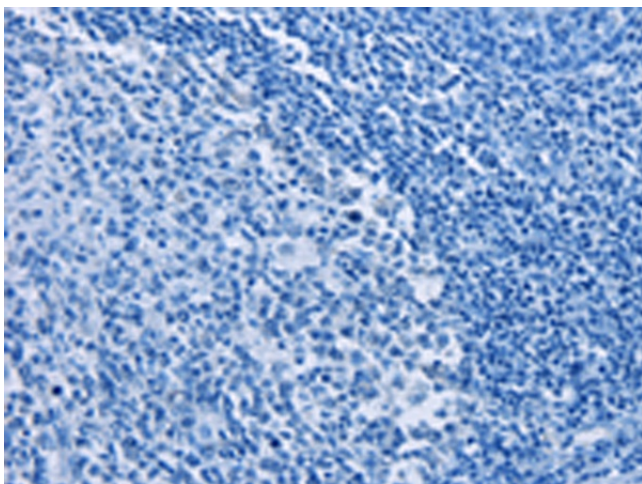
Protein Families: Druggable Genome

Protein Pathways: Lysine degradation

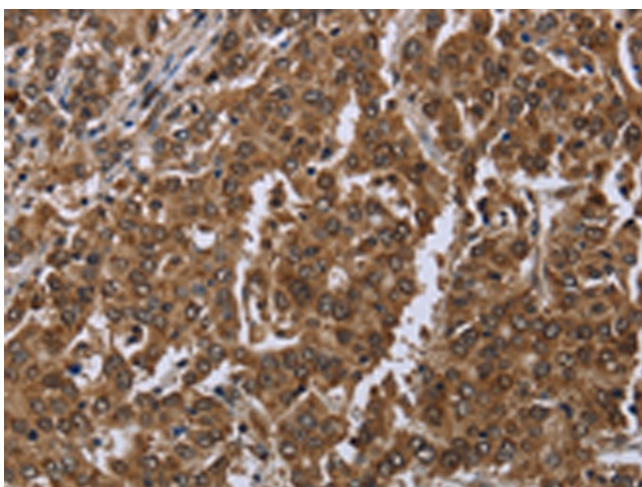
### Product images:



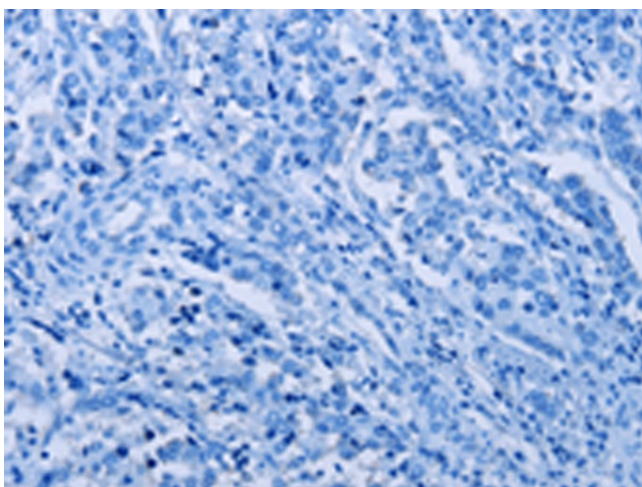
Immunohistochemistry of paraffin-embedded Human tonsil tissue using TA350048 (SETD7 Antibody) at dilution 1/20 (Original magnification: ×200)



Immunohistochemistry of paraffin-embedded Human tonsil tissue using TA350048 (SETD7 Antibody) at dilution 1/20, treated with fusion protein. (Original magnification: ×200)



Immunohistochemistry of paraffin-embedded Human liver cancer tissue using TA350048 (SETD7 Antibody) at dilution 1/20 (Original magnification:  $\times 200$ )



Immunohistochemistry of paraffin-embedded Human liver cancer tissue using TA350048 (SETD7 Antibody) at dilution 1/20, treated with fusion protein. (Original magnification:  $\times 200$ )