

Product datasheet for **TA350047S**

H4-16 Rabbit Polyclonal Antibody

Product data:

| | |
|-------------------------|--|
| Product Type: | Primary Antibodies |
| Applications: | IHC, WB |
| Recommended Dilution: | WB: 500-2000 WB positive control: K562 cells, mouse pancreas tissue and Hela cells, mouse thymus tissue and 293T cells, NIH/3T3 and LoVo cells IHC: 50-200 Positive control: Human colon cancer Predicted cell location: Nucleus |
| Reactivity: | Human, Mouse, Rat |
| Host: | Rabbit |
| Isotype: | IgG |
| Clonality: | Polyclonal |
| Immunogen: | Fusion protein of human HIST4H4 |
| Formulation: | pH7.4 PBS, 0.05% NaN ₃ , 40% Glycerol |
| Purification: | Antigen affinity purification |
| Conjugation: | Unconjugated |
| Storage: | Store at -20°C as received. |
| Stability: | Stable for 12 months from date of receipt. |
| Predicted Protein Size: | 11 kDa |
| Gene Name: | histone cluster 4, H4 |
| Database Link: | NP_778224 Entrez Gene 320332 MouseEntrez Gene 680097 RatEntrez Gene 121504 Human P62805 |



[View online »](#)

Background:

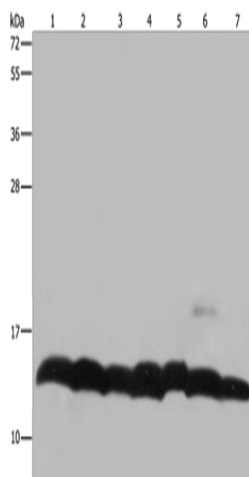
Histones are basic nuclear proteins that are responsible for the nucleosome structure of the chromosomal fiber in eukaryotes. Nucleosomes consist of approximately 146 bp of DNA wrapped around a histone octamer composed of pairs of each of the four core histones (H2A, H2B, H3, and H4). The chromatin fiber is further compacted through the interaction of a linker histone, H1, with the DNA between the nucleosomes to form higher order chromatin structures. This gene is intronless and encodes a member of the histone H4 family. Transcripts from this gene lack polyA tails; instead, they contain a palindromic termination element.

Synonyms:

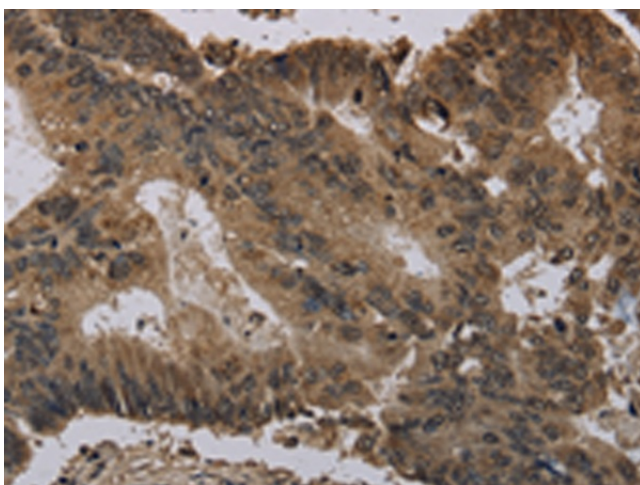
H4; p

Protein Pathways:

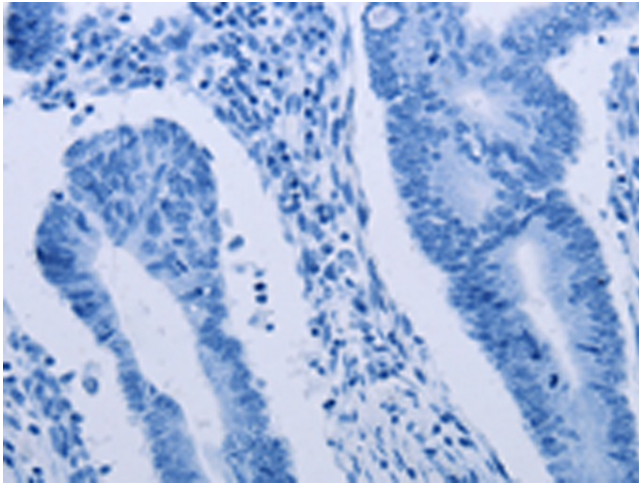
Systemic lupus erythematosus

Product images:


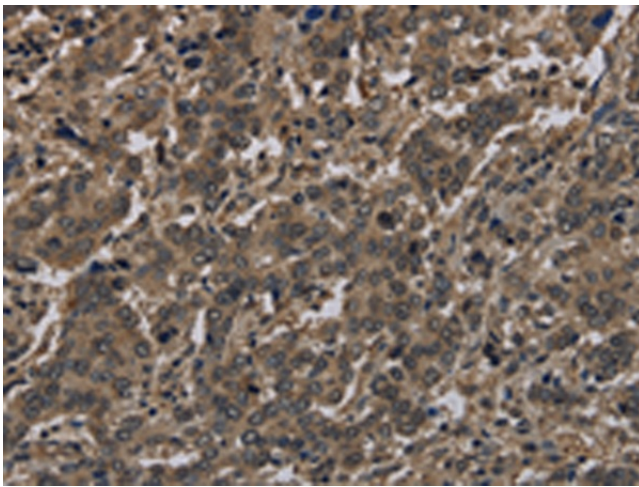
Gel: 10%SDS-PAGE
 Lysate: 40 µg
 Lane 1-7: K562 cells
 mouse pancreas tissue
 HeLa cells
 mouse thymus tissue
 293T cells
 NIH/3T3 cells
 LoVo cells
 Primary antibody: [TA350047] (H4C1 Antibody) at dilution 1/300
 Secondary antibody: Goat anti rabbit IgG at 1/8000 dilution
 Exposure time: 10 seconds



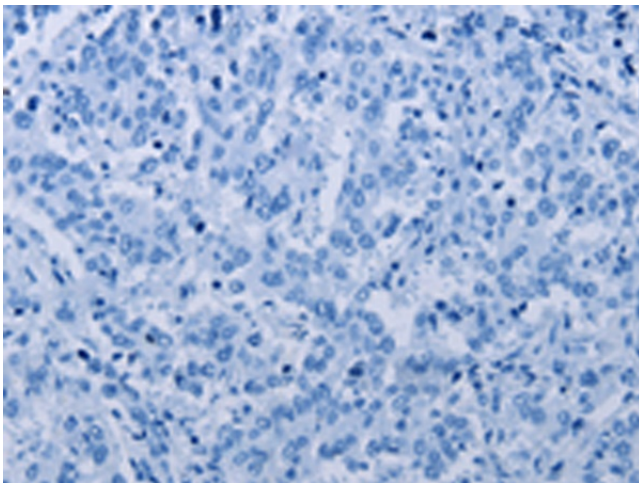
Immunohistochemistry of paraffin-embedded Human colon cancer tissue using [TA350047] (H4C1 Antibody) at dilution 1/30 (Original magnification: ×200)



Immunohistochemistry of paraffin-embedded Human colon cancer tissue using [TA350047] (H4C1 Antibody) at dilution 1/30, treated with fusion protein. (Original magnification: ×200)



Immunohistochemistry of paraffin-embedded Human liver cancer tissue using [TA350047] (H4C1 Antibody) at dilution 1/30 (Original magnification: ×200)



Immunohistochemistry of paraffin-embedded Human liver cancer tissue using [TA350047] (H4C1 Antibody) at dilution 1/30, treated with fusion protein. (Original magnification: ×200)