

## Product datasheet for **TA350044**

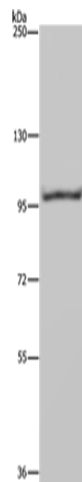
### HEF1 (NEDD9) Rabbit Polyclonal Antibody

#### Product data:

Product Type:	Primary Antibodies
Applications:	WB
Recommended Dilution:	WB: 200-1000 WB positive control: Raji cells
Reactivity:	Human
Host:	Rabbit
Isotype:	IgG
Clonality:	Polyclonal
Immunogen:	Fusion protein of human NEDD9
Formulation:	pH7.4 PBS, 0.05% NaN <sub>3</sub> , 40% Glycerol
Concentration:	lot specific
Purification:	Antigen affinity purification
Conjugation:	Unconjugated
Storage:	Store at -20°C as received.
Stability:	Stable for 12 months from date of receipt.
Predicted Protein Size:	93 kDa
Gene Name:	neural precursor cell expressed, developmentally down-regulated 9
Database Link:	<a href="#">NP_006394</a> <a href="#">Entrez Gene 4739 Human</a> <a href="#">Q14511</a>
Background:	The protein encoded by this gene is a member of the CRK-associated substrates family. Members of this family are adhesion docking molecules that mediate protein-protein interactions for signal transduction pathways. This protein is a focal adhesion protein that acts as a scaffold to regulate signaling complexes important in cell attachment, migration and invasion as well as apoptosis and the cell cycle. This protein has also been reported to have a role in cancer metastasis. Alternative splicing results in multiple transcript variants.
Synonyms:	CAS-L; CAS2; CASL; CASS2; HEF1



[View online »](#)

**Product images:**

Gel: 6%SDS-PAGE  
Lysate: 40 µg  
Lane: Raji cells  
Primary antibody: TA350044 (NEDD9 Antibody) at dilution 1/650  
Secondary antibody: Goat anti rabbit IgG at 1/8000 dilution  
Exposure time: 20 seconds