

Product datasheet for **TA350043**

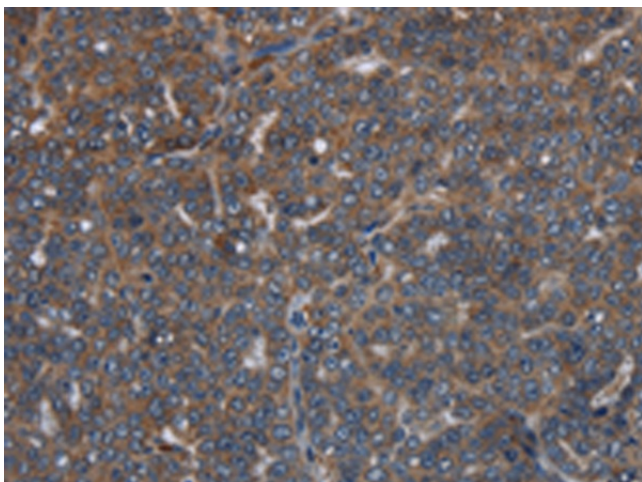
LETMD1 Rabbit Polyclonal Antibody

Product data:

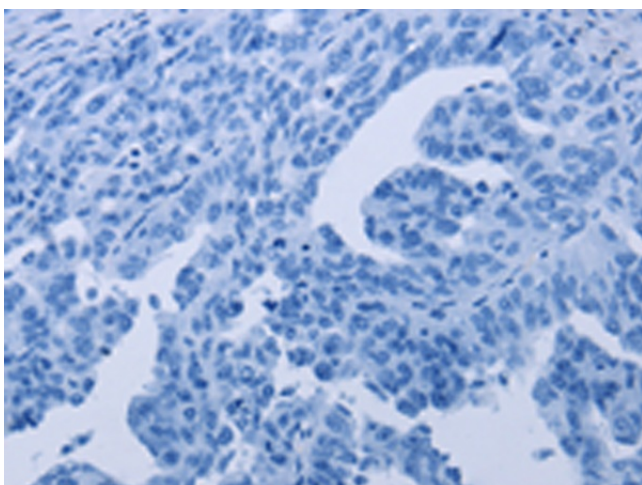
Product Type:	Primary Antibodies
Applications:	IHC
Recommended Dilution:	IHC: 50-200 Positive control: Human ovarian cancer Predicted cell location: Cytoplasm
Reactivity:	Human
Host:	Rabbit
Isotype:	IgG
Clonality:	Polyclonal
Immunogen:	Fusion protein of human LETMD1
Formulation:	pH7.4 PBS, 0.05% NaN ₃ , 40% Glycerol
Concentration:	lot specific
Purification:	Antigen affinity purification
Conjugation:	Unconjugated
Storage:	Store at -20°C as received.
Stability:	Stable for 12 months from date of receipt.
Gene Name:	LETM1 domain containing 1
Database Link:	NP_056231 Entrez Gene 25875 Human Q6P1Q0
Background:	This gene encodes a mitochondrial outer membrane protein. It has a potential role in tumorigenesis, which may result from negative regulation of the p53 tumor suppressor gene. Alternatively spliced transcript variants have been noted for this gene.
Synonyms:	1110019O13Rik; HCCR; HCCR-1; HCCR-2; HCCR1; HCCR2; HCRR-2
Protein Families:	Druggable Genome, Transmembrane

[View online »](#)

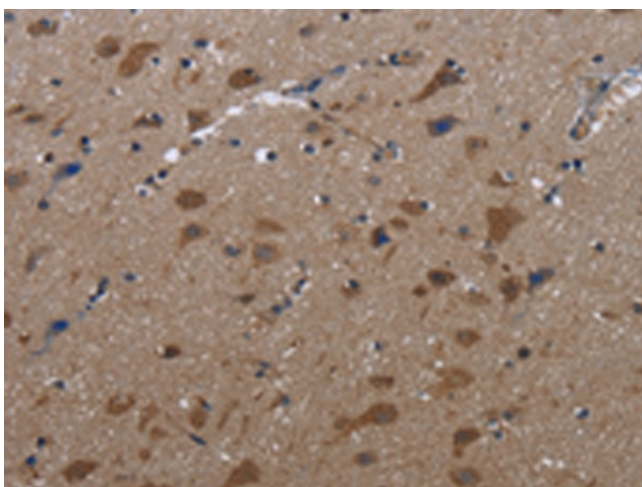
Product images:



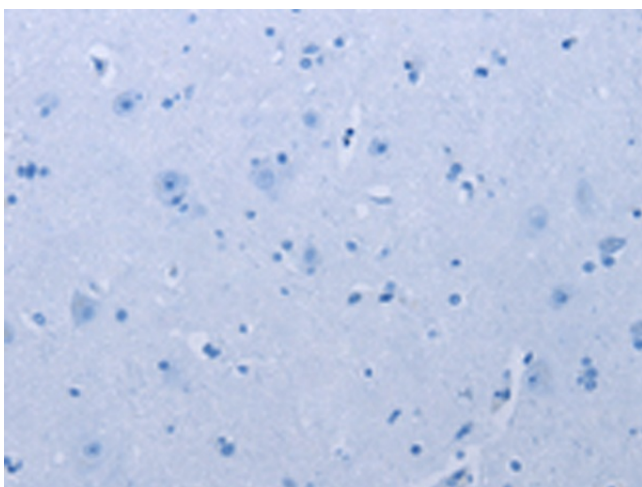
Immunohistochemistry of paraffin-embedded Human ovarian cancer tissue using TA350043 (LETMD1 Antibody) at dilution 1/30 (Original magnification: ×200)



Immunohistochemistry of paraffin-embedded Human ovarian cancer tissue using TA350043 (LETMD1 Antibody) at dilution 1/30, treated with fusion protein. (Original magnification: ×200)



Immunohistochemistry of paraffin-embedded Human brain tissue using TA350043 (LETMD1 Antibody) at dilution 1/30 (Original magnification: ×200)



Immunohistochemistry of paraffin-embedded Human brain tissue using TA350043 (LETMD1 Antibody) at dilution 1/30, treated with fusion protein. (Original magnification: ×200)