

Product datasheet for **TA350042**

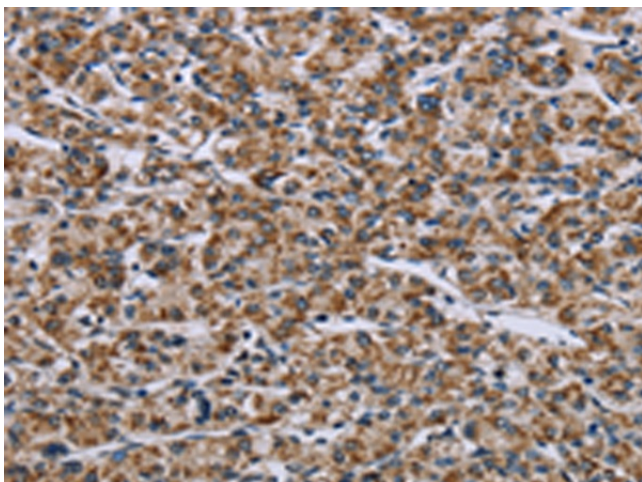
GTPBP10 Rabbit Polyclonal Antibody

Product data:

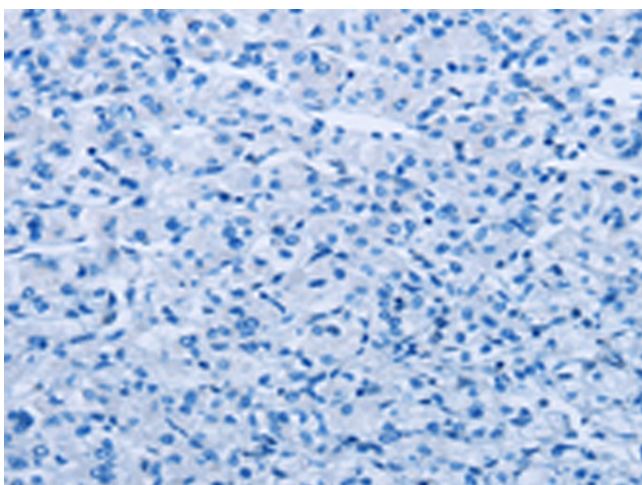
Product Type:	Primary Antibodies
Applications:	IHC
Recommended Dilution:	IHC: 50-200 Positive control: Human prostate cancer Predicted cell location: Cytoplasm
Reactivity:	Human
Host:	Rabbit
Isotype:	IgG
Clonality:	Polyclonal
Immunogen:	Fusion protein of human GTPBP10
Formulation:	pH7.4 PBS, 0.05% NaN ₃ , 40% Glycerol
Concentration:	lot specific
Purification:	Antigen affinity purification
Conjugation:	Unconjugated
Storage:	Store at -20°C as received.
Stability:	Stable for 12 months from date of receipt.
Gene Name:	GTP binding protein 10
Database Link:	NP_149098 Entrez Gene 85865 Human A4D1E9
Background:	Small G proteins, such as GTPBP10, act as molecular switches that play crucial roles in the regulation of fundamental cellular processes such as protein synthesis, nuclear transport, membrane trafficking, and signal transduction
Synonyms:	ObgH2; UG0751c10



[View online »](#)

Product images:

Immunohistochemistry of paraffin-embedded Human prostate cancer tissue using TA350042 (GTPBP10 Antibody) at dilution 1/60 (Original magnification: $\times 200$)



Immunohistochemistry of paraffin-embedded Human prostate cancer tissue using TA350042 (GTPBP10 Antibody) at dilution 1/60, treated with fusion protein. (Original magnification: $\times 200$)