

## Product datasheet for **TA350041**

### GTPBP10 Rabbit Polyclonal Antibody

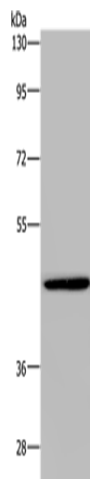
#### Product data:

Product Type:	Primary Antibodies
Applications:	WB
Recommended Dilution:	WB: 200-1000 WB positive control: A549 cells
Reactivity:	Human
Host:	Rabbit
Isotype:	IgG
Clonality:	Polyclonal
Immunogen:	Fusion protein of human GTPBP10
Formulation:	pH7.4 PBS, 0.05% NaN <sub>3</sub> , 40% Glycerol
Concentration:	lot specific
Purification:	Antigen affinity purification
Conjugation:	Unconjugated
Storage:	Store at -20°C as received.
Stability:	Stable for 12 months from date of receipt.
Predicted Protein Size:	43 kDa
Gene Name:	GTP binding protein 10
Database Link:	<a href="#">NP_149098</a> <a href="#">Entrez Gene 85865 Human</a> <a href="#">A4D1E9</a>
Background:	Small G proteins, such as GTPBP10, act as molecular switches that play crucial roles in the regulation of fundamental cellular processes such as protein synthesis, nuclear transport, membrane trafficking, and signal transduction
Synonyms:	ObgH2; UG0751c10



[View online »](#)

## Product images:



Gel: 8%SDS-PAGE

Lysate: 40 µg

Lane: A549 cells

Primary antibody: TA350041 (GTPBP10 Antibody)  
at dilution 1/200

Secondary antibody: Goat anti rabbit IgG at  
1/8000 dilution

Exposure time: 10 minutes