

Product datasheet for **TA350033S**

GOT2 Rabbit Polyclonal Antibody

Product data:

Product Type:	Primary Antibodies
Applications:	IHC, WB
Recommended Dilution:	WB: 500-2000 WB positive control: 293T and Hela cells, Human fetal liver, mouse spleen and heart tissue, human fetal brain and hepatocellular carcinoma tissue IHC: 100-300 Positive control: Human colon cancer Predicted cell location: Cytoplasm
Reactivity:	Human, Mouse, Rat
Host:	Rabbit
Isotype:	IgG
Clonality:	Polyclonal
Immunogen:	Fusion protein of human GOT2
Formulation:	pH7.4 PBS, 0.05% NaN ₃ , 40% Glycerol
Purification:	Antigen affinity purification
Conjugation:	Unconjugated
Storage:	Store at -20°C as received.
Stability:	Stable for 12 months from date of receipt.
Predicted Protein Size:	48 kDa
Gene Name:	glutamic-oxaloacetic transaminase 2
Database Link:	NP_002071 Entrez Gene 14719 Mouse Entrez Gene 25721 Rat Entrez Gene 2806 Human P00505
Background:	Glutamic-oxaloacetic transaminase is a pyridoxal phosphate-dependent enzyme which exists in cytoplasmic and inner-membrane mitochondrial forms, GOT1 and GOT2, respectively. GOT plays a role in amino acid metabolism and the urea and tricarboxylic acid cycles. The two enzymes are homodimeric and show close homology. Two transcript variants encoding different isoforms have been found for this gene.



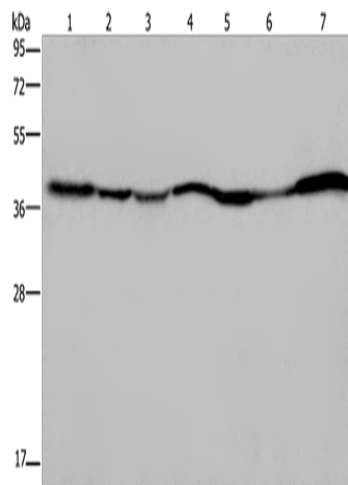
[View online »](#)

Synonyms: KAT4; KATIV; mitAAT

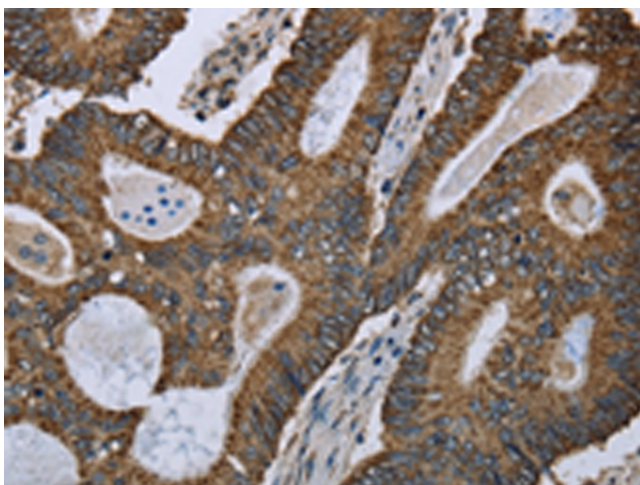
Protein Families: Stem cell - Pluripotency

Protein Pathways: Alanine, aspartate and glutamate metabolism, Arginine and proline metabolism, Cysteine and methionine metabolism, Metabolic pathways, Phenylalanine, tyrosine and tryptophan biosynthesis, Phenylalanine metabolism, Tyrosine metabolism

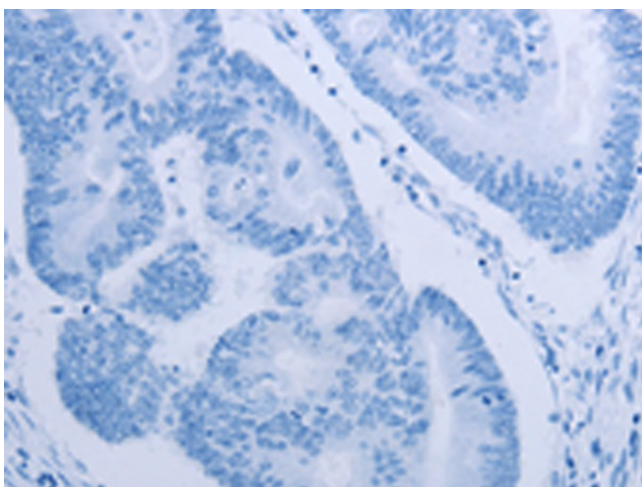
Product images:



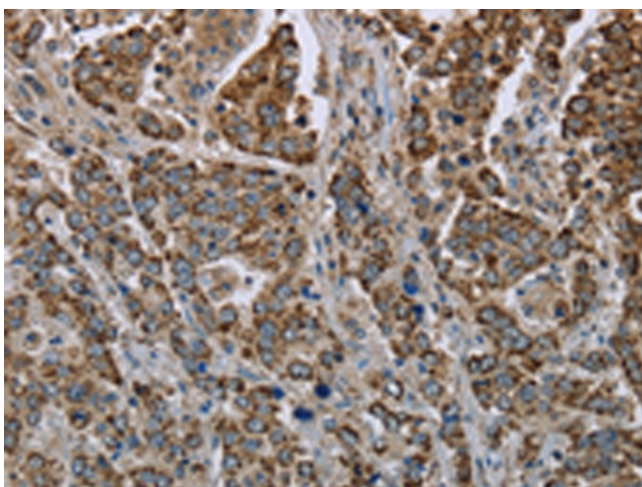
Gel: 10%SDS-PAGE
Lysate: 40 µg
Lane 1-7: 293T cells
Hela cells
Human fetal liver tissue
mouse spleen tissue
Mouse heart tissue
human fetal brain tissue
hepatocellular carcinoma tissue
Primary antibody: [TA350033] (GOT2 Antibody) at dilution 1/400
Secondary antibody: Goat anti rabbit IgG at 1/8000 dilution
Exposure time: 10 seconds



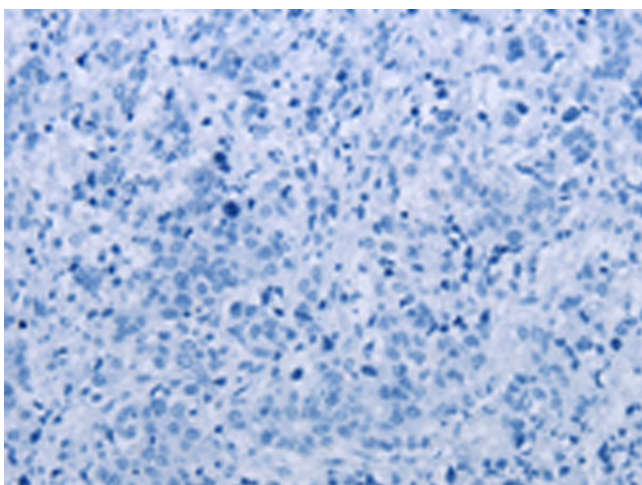
Immunohistochemistry of paraffin-embedded Human colon cancer tissue using [TA350033] (GOT2 Antibody) at dilution 1/50 (Original magnification: ×200)



Immunohistochemistry of paraffin-embedded Human colon cancer tissue using [TA350033] (GOT2 Antibody) at dilution 1/50, treated with fusion protein. (Original magnification: $\times 200$)



Immunohistochemistry of paraffin-embedded Human liver cancer tissue using [TA350033] (GOT2 Antibody) at dilution 1/50 (Original magnification: $\times 200$)



Immunohistochemistry of paraffin-embedded Human liver cancer tissue using [TA350033] (GOT2 Antibody) at dilution 1/50, treated with fusion protein. (Original magnification: $\times 200$)