

## Product datasheet for **TA350032S**

### GNP2 Rabbit Polyclonal Antibody

#### Product data:

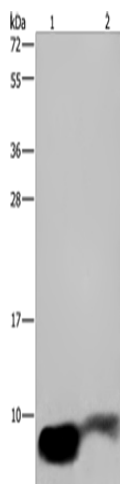
Product Type:	Primary Antibodies
Applications:	IHC, WB
Recommended Dilution:	WB: 500-2000 WB positive control: Human fetal brain and mouse brain tissue IHC: 50-200 Positive control: Human gastric cancer Predicted cell location: Cytoplasm
Reactivity:	Human, Mouse
Host:	Rabbit
Isotype:	IgG
Clonality:	Polyclonal
Immunogen:	Fusion protein of human GNG2
Formulation:	pH7.4 PBS, 0.05% NaN <sub>3</sub> , 40% Glycerol
Purification:	Antigen affinity purification
Conjugation:	Unconjugated
Storage:	Store at -20°C as received.
Stability:	Stable for 12 months from date of receipt.
Predicted Protein Size:	8 kDa
Gene Name:	G protein subunit gamma 2
Database Link:	<a href="#">NP_444292</a> <a href="#">Entrez Gene 54331 Human</a> <a href="#">P59768</a>
Background:	This gene encodes one of the gamma subunits of a guanine nucleotide-binding protein. Such proteins are involved in signaling mechanisms across membranes. Various subunits forms heterodimers which then interact with the different signal molecules.
Synonyms:	G(O) gamma-2 subunit; gamma 2; G protein; guanine nucleotide-binding protein G(I); guanine nucleotide binding protein (G protein); guanine nucleotide binding protein gamma 2
Protein Families:	Druggable Genome



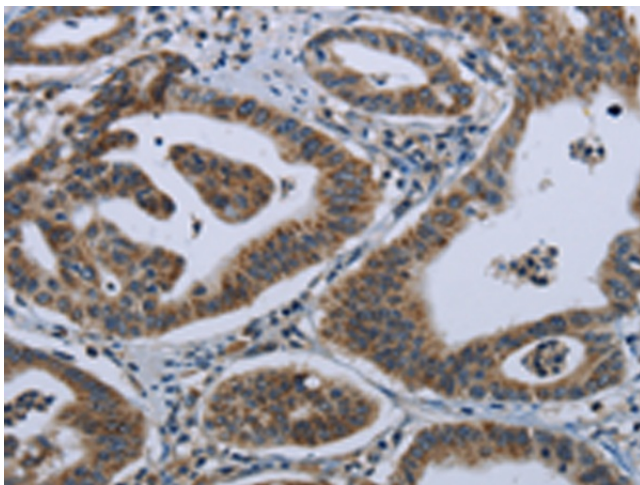
[View online »](#)

Protein Pathways: Chemokine signaling pathway

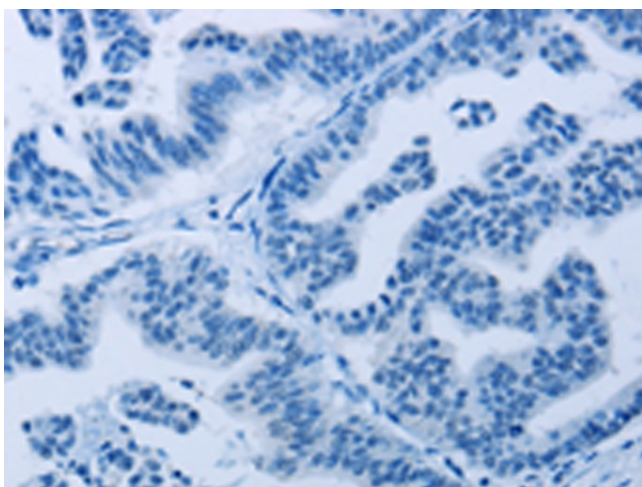
### Product images:



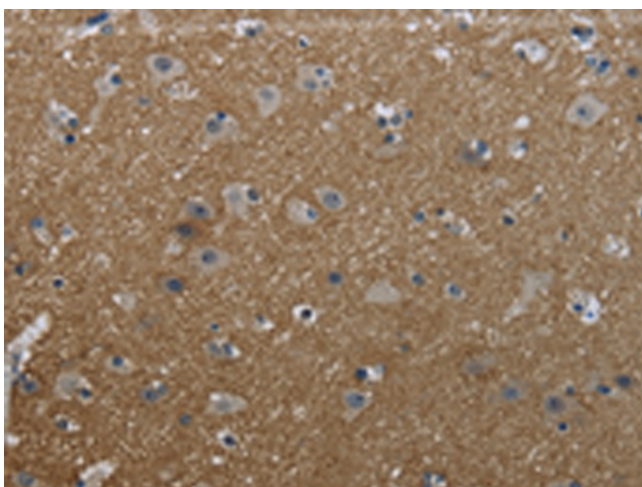
Gel: 10%SDS-PAGE  
Lysate: 40  $\mu$ g  
Lane 1-2: Human fetal brain tissue  
mouse brain tissue  
Primary antibody: [TA350032] (GNG2 Antibody) at  
dilution 1/350  
Secondary antibody: Goat anti rabbit IgG at  
1/8000 dilution  
Exposure time: 2 minutes



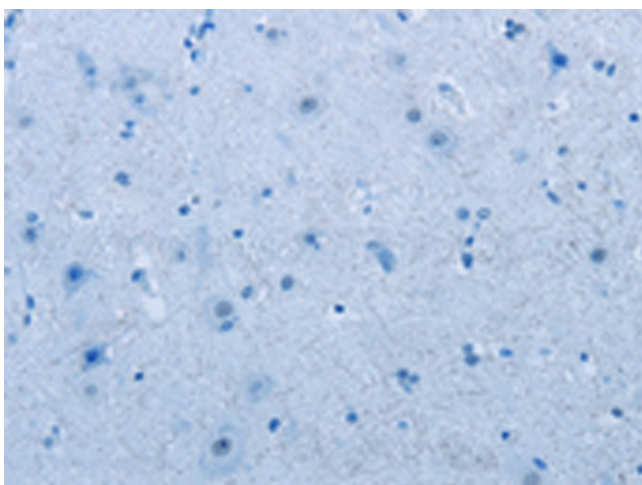
Immunohistochemistry of paraffin-embedded  
Human gastric cancer tissue using [TA350032]  
(GNG2 Antibody) at dilution 1/50 (Original  
magnification:  $\times$ 200)



Immunohistochemistry of paraffin-embedded Human gastric cancer tissue using [TA350032] (GNG2 Antibody) at dilution 1/50, treated with fusion protein. (Original magnification:  $\times 200$ )



Immunohistochemistry of paraffin-embedded Human brain tissue using [TA350032] (GNG2 Antibody) at dilution 1/50 (Original magnification:  $\times 200$ )



Immunohistochemistry of paraffin-embedded Human brain tissue using [TA350032] (GNG2 Antibody) at dilution 1/50, treated with fusion protein. (Original magnification:  $\times 200$ )