

Product datasheet for **TA350028**

Glycogen synthase 1 (GYS1) Rabbit Polyclonal Antibody

Product data:

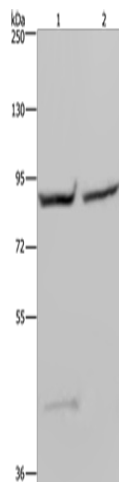
Product Type:	Primary Antibodies
Applications:	IHC, WB
Recommended Dilution:	WB: 200-1000 WB positive control: 293T and Hela cells IHC: 50-200 Positive control: Human brain Predicted cell location: Cytoplasm
Reactivity:	Human, Mouse, Rat
Host:	Rabbit
Isotype:	IgG
Clonality:	Polyclonal
Immunogen:	Fusion protein of human GYS1
Formulation:	pH7.4 PBS, 0.05% NaN ₃ , 40% Glycerol
Concentration:	lot specific
Purification:	Antigen affinity purification
Conjugation:	Unconjugated
Storage:	Store at -20°C as received.
Stability:	Stable for 12 months from date of receipt.
Predicted Protein Size:	84 kDa
Gene Name:	glycogen synthase 1
Database Link:	NP_002094 Entrez Gene 14936 Mouse Entrez Gene 690987 Rat Entrez Gene 2997 Human P13807
Background:	The protein encoded by this gene catalyzes the addition of glucose monomers to the growing glycogen molecule through the formation of alpha-1,4-glycoside linkages. Mutations in this gene are associated with muscle glycogen storage disease. Alternatively spliced transcript variants encoding different isoforms have been found for this gene.
Synonyms:	GSY; GYS



[View online »](#)

Protein Pathways: Insulin signaling pathway, Starch and sucrose metabolism

Product images:



Gel: 6%SDS-PAGE

Lysate: 40 µg

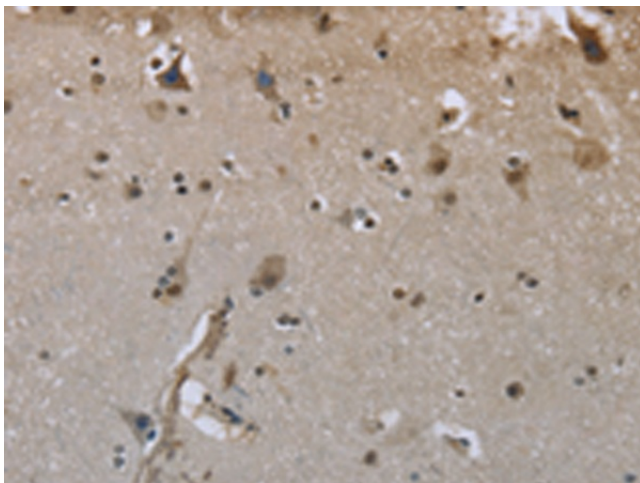
Lane 1-2: 293T cells

Hela cells

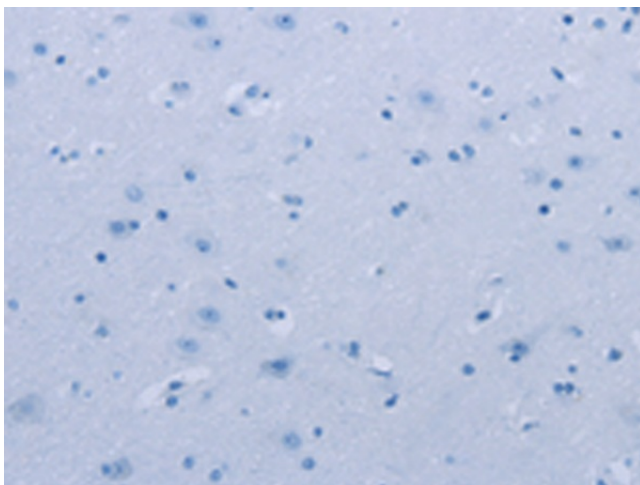
Primary antibody: TA350028 (GYS1 Antibody) at dilution 1/400

Secondary antibody: Goat anti rabbit IgG at 1/8000 dilution

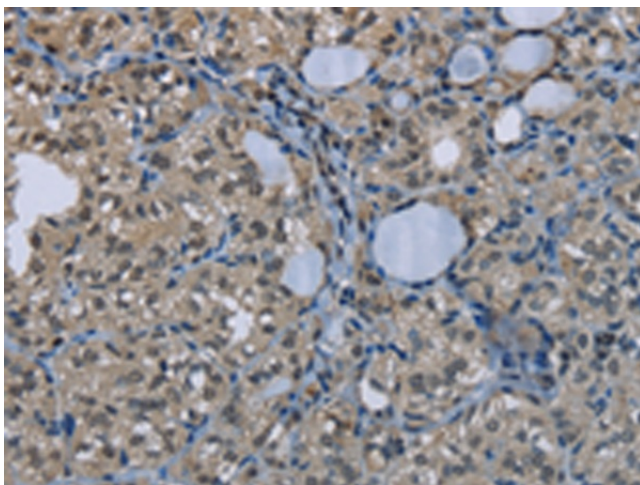
Exposure time: 20 seconds



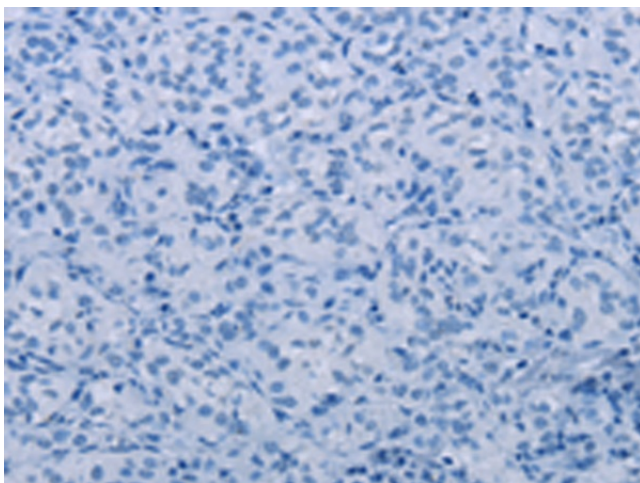
Immunohistochemistry of paraffin-embedded Human brain tissue using TA350028 (GYS1 Antibody) at dilution 1/50 (Original magnification: ×200)



Immunohistochemistry of paraffin-embedded Human brain tissue using TA350028 (GYS1 Antibody) at dilution 1/50, treated with fusion protein. (Original magnification: $\times 200$)



Immunohistochemistry of paraffin-embedded Human thyroid cancer tissue using TA350028 (GYS1 Antibody) at dilution 1/50 (Original magnification: $\times 200$)



Immunohistochemistry of paraffin-embedded Human thyroid cancer tissue using TA350028 (GYS1 Antibody) at dilution 1/50, treated with fusion protein. (Original magnification: $\times 200$)