

Product datasheet for **TA350025**

Glutaredoxin 1 (GLRX) Rabbit Polyclonal Antibody

Product data:

Product Type:	Primary Antibodies
Applications:	IHC, WB
Recommended Dilution:	WB: 200-1000 WB positive control: Human placenta tissue lysate IHC: 50-200 Positive control: Human liver cancer Predicted cell location: Cytoplasm
Reactivity:	Human, Mouse, Rat
Host:	Rabbit
Isotype:	IgG
Clonality:	Polyclonal
Immunogen:	Fusion protein of human GLRX
Formulation:	pH7.4 PBS, 0.05% NaN ₃ , 40% Glycerol
Concentration:	lot specific
Purification:	Antigen affinity purification
Conjugation:	Unconjugated
Storage:	Store at -20°C as received.
Stability:	Stable for 12 months from date of receipt.
Predicted Protein Size:	12 kDa
Gene Name:	glutaredoxin
Database Link:	NP_002055 Entrez Gene 64045 Rat Entrez Gene 93692 Mouse Entrez Gene 2745 Human P35754

Background: This gene encodes a member of the glutaredoxin family. The encoded protein is a cytoplasmic enzyme catalyzing the reversible reduction of glutathione-protein mixed disulfides. This enzyme highly contributes to the antioxidant defense system. It is crucial for several signalling pathways by controlling the S-glutathionylation status of signalling mediators. It is involved in beta-amyloid toxicity and Alzheimer's disease.

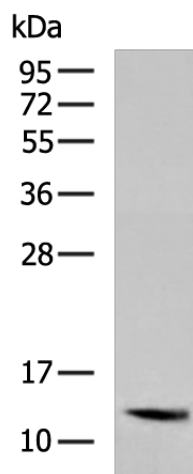


[View online »](#)

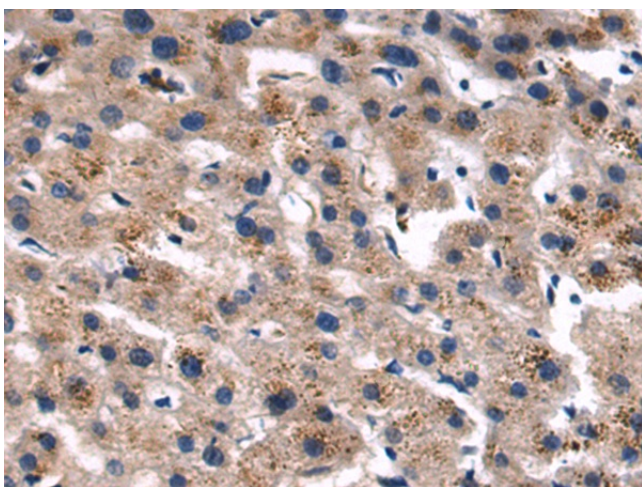
Synonyms: GRX; GRX1

Protein Families: Druggable Genome

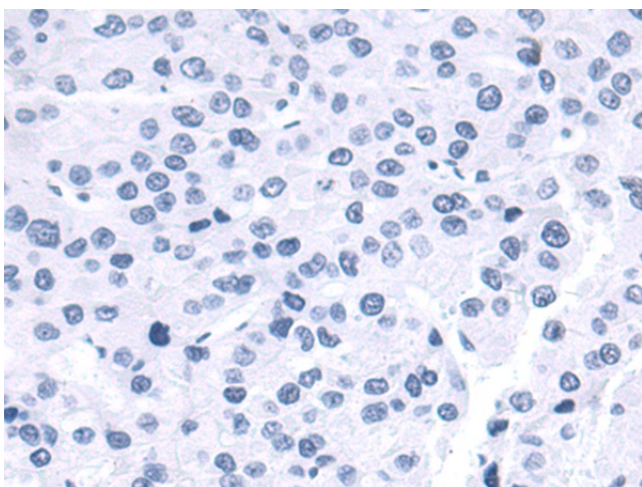
Product images:



Gel: 12%SDS-PAGE
Lysate: 40 μ g
Lane: Human placenta tissue lysate
Primary antibody: TA350025 (GLRX Antibody) at dilution 1/400
Secondary antibody: Goat anti rabbit IgG at 1/5000 dilution
Exposure time: 40 seconds



Immunohistochemistry of paraffin-embedded Human liver cancer tissue using TA350025 (GLRX Antibody) at dilution 1/50 (Original magnification: \times 200)



Immunohistochemistry of paraffin-embedded Human liver cancer tissue using TA350025 (GLRX Antibody) at dilution 1/50, treated with fusion protein. (Original magnification: x200)