

## Product datasheet for **TA350023S**

### Phosphoribosyl pyrophosphate amidotransferase (PPAT) Rabbit Polyclonal Antibody

#### Product data:

Product Type:	Primary Antibodies
Applications:	IHC, WB
Recommended Dilution:	WB: 500-2000 WB positive control: Hela, Raji, Jurkat, A549 and NIH/3T3 cells IHC: 100-300 Positive control: Human cervical cancer Predicted cell location: Cytoplasm and Nucleus
Reactivity:	Human, Mouse, Rat
Host:	Rabbit
Isotype:	IgG
Clonality:	Polyclonal
Immunogen:	Fusion protein of human PPAT
Formulation:	pH7.4 PBS, 0.05% NaN <sub>3</sub> , 40% Glycerol
Purification:	Antigen affinity purification
Conjugation:	Unconjugated
Storage:	Store at -20°C as received.
Stability:	Stable for 12 months from date of receipt.
Predicted Protein Size:	57 kDa
Gene Name:	phosphoribosyl pyrophosphate amidotransferase
Database Link:	<a href="#">NP_002694</a> <a href="#">Entrez Gene 117544</a> <a href="#">RatEntrez Gene 231327</a> <a href="#">MouseEntrez Gene 5471</a> <a href="#">Human Q06203</a>
Background:	The protein encoded by this gene is a member of the purine/pyrimidine phosphoribosyltransferase family. It is a regulatory allosteric enzyme that catalyzes the first step of de novo purine nucleotide biosynthetic pathway. This gene and PAICS/AIRC gene, a bifunctional enzyme catalyzing steps six and seven of this pathway, are located in close proximity on chromosome 4, and divergently transcribed from an intergenic region.
Synonyms:	ATASE; GPAT; PRAT

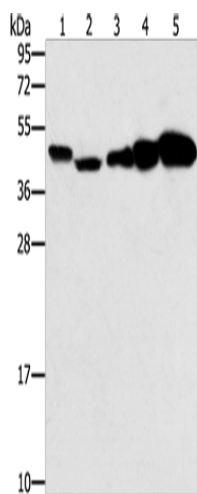


[View online »](#)

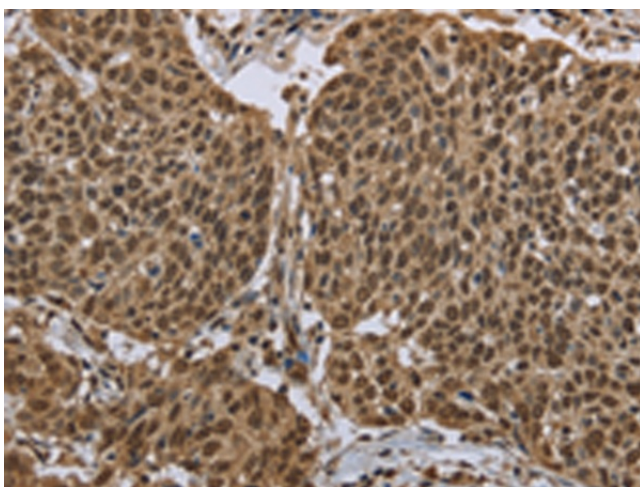
**Protein Families:** Druggable Genome, Protease

**Protein Pathways:** Alanine, aspartate and glutamate metabolism, Metabolic pathways, Purine metabolism

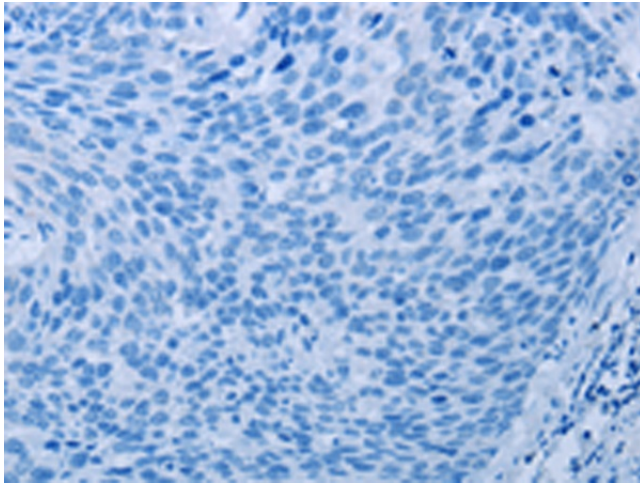
**Product images:**



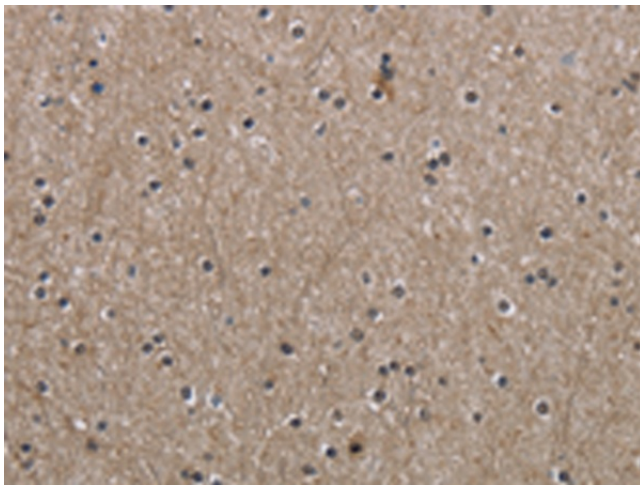
Gel: 10%SDS-PAGE  
 Lysate: 40 µg  
 Lane 1-5: HeLa cells  
 Raji cells  
 Jurkat cells  
 A549 cells  
 NIH/3T3 cells  
 Primary antibody: [TA350023] (PPAT Antibody) at dilution 1/250  
 Secondary antibody: Goat anti rabbit IgG at 1/8000 dilution  
 Exposure time: 20 seconds



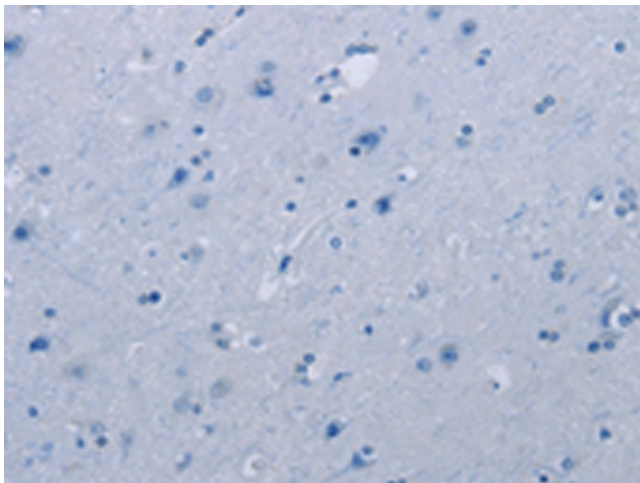
Immunohistochemistry of paraffin-embedded Human cervical cancer tissue using [TA350023] (PPAT Antibody) at dilution 1/50 (Original magnification: ×200)



Immunohistochemistry of paraffin-embedded Human cervical cancer tissue using [TA350023] (PPAT Antibody) at dilution 1/50, treated with fusion protein. (Original magnification:  $\times 200$ )



Immunohistochemistry of paraffin-embedded Human brain tissue using [TA350023] (PPAT Antibody) at dilution 1/50 (Original magnification:  $\times 200$ )



Immunohistochemistry of paraffin-embedded Human brain tissue using [TA350023] (PPAT Antibody) at dilution 1/50, treated with fusion protein. (Original magnification:  $\times 200$ )