

Product datasheet for **TA350022**

Glucocorticoid Receptor (NR3C1) Rabbit Polyclonal Antibody

Product data:

Product Type:	Primary Antibodies
Applications:	IHC, WB
Recommended Dilution:	WB: 500-2000 WB positive control: K562, 231, HeLa, HepG2 cell, Mouse liver tissue, A172 cell, Jurkat cell, Mouse smooth muscle cell lysates IHC: 50-200 Positive control: Human liver cancer Predicted cell location: Cytoplasm
Reactivity:	Human, Mouse, Rat
Host:	Rabbit
Isotype:	IgG
Clonality:	Polyclonal
Immunogen:	Fusion protein of human NR3C1
Formulation:	pH7.4 PBS, 0.05% NaN ₃ , 40% Glycerol
Concentration:	lot specific
Purification:	Antigen affinity purification
Conjugation:	Unconjugated
Storage:	Store at -20°C as received.
Stability:	Stable for 12 months from date of receipt.
Predicted Protein Size:	86 kDa
Gene Name:	nuclear receptor subfamily 3 group C member 1
Database Link:	NP_001019265 Entrez Gene 14815 Mouse Entrez Gene 24413 Rat Entrez Gene 2908 Human P04150



[View online »](#)

Background:

This gene encodes glucocorticoid receptor, which can function both as a transcription factor that binds to glucocorticoid response elements in the promoters of glucocorticoid responsive genes to activate their transcription, and as a regulator of other transcription factors. This receptor is typically found in the cytoplasm, but upon ligand binding, is transported into the nucleus. It is involved in inflammatory responses, cellular proliferation, and differentiation in target tissues. Mutations in this gene are associated with generalized glucocorticoid resistance. Alternative splicing of this gene results in transcript variants encoding either the same or different isoforms.

Synonyms:

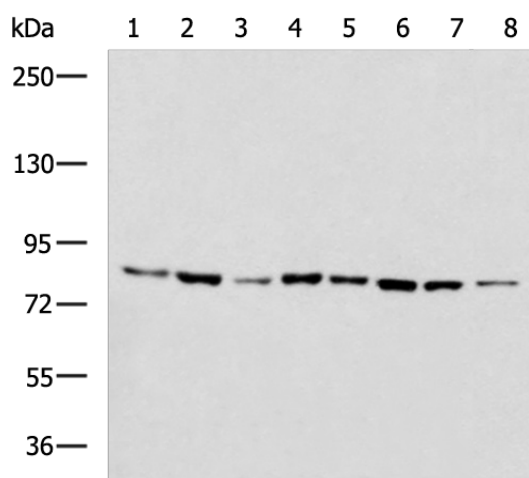
GCCR; GCR; GCRST; GR; GRL

Protein Families:

Druggable Genome, Nuclear Hormone Receptor, Transcription Factors

Protein Pathways:

Neuroactive ligand-receptor interaction

Product images:


Gel: 6%SDS-PAGE

Lysate: 40 µg

Lane 1-8: K562

231

Hela

HepG2 cell

Mouse liver tissue

A172 cell

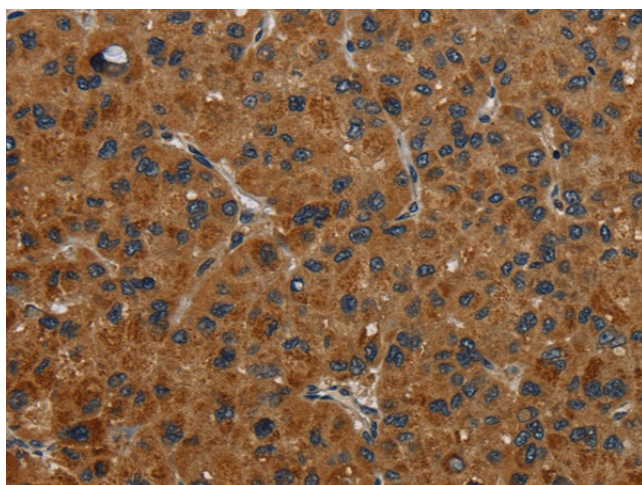
Jurkat cell

Mouse smooth muscle cell lysates

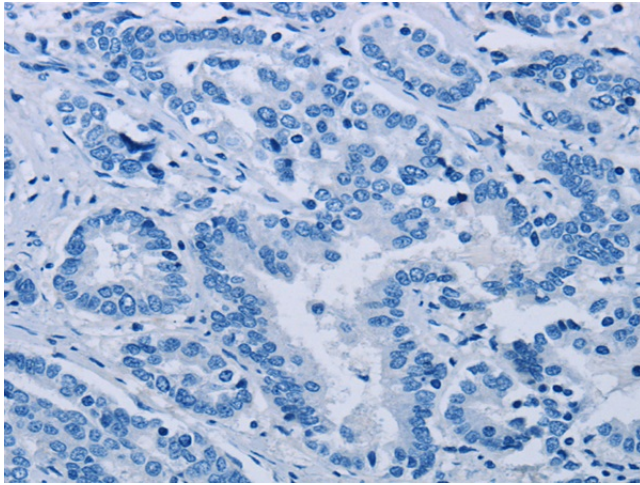
Primary antibody: TA350022 (NR3C1 Antibody) at dilution 1/700

Secondary antibody: Goat anti rabbit IgG at 1/5000 dilution

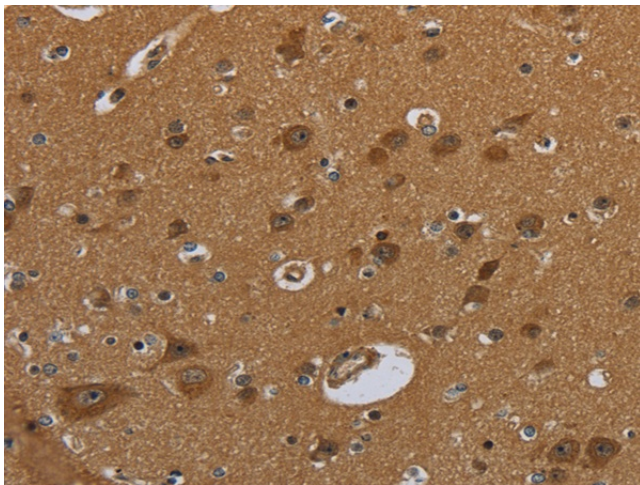
Exposure time: 2 minutes



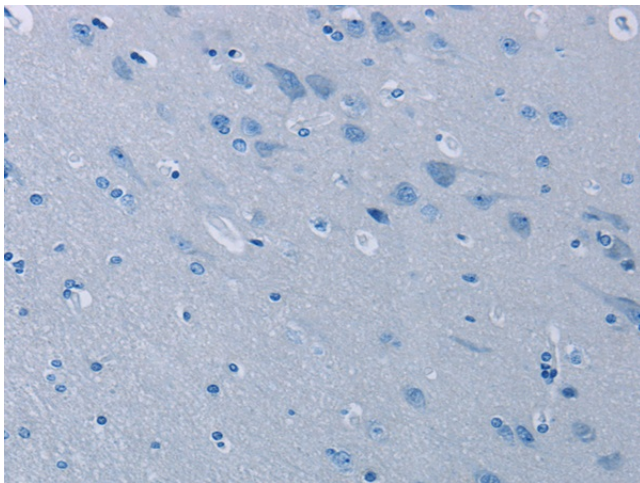
Immunohistochemistry of paraffin-embedded Human liver cancer tissue using TA350022 (NR3C1 Antibody) at dilution 1/30 (Original magnification: ×200)



Immunohistochemistry of paraffin-embedded Human liver cancer tissue using TA350022 (NR3C1 Antibody) at dilution 1/30, treated with fusion protein. (Original magnification: ×200)



Immunohistochemistry of paraffin-embedded Human brain tissue using TA350022 (NR3C1 Antibody) at dilution 1/30 (Original magnification: ×200)



Immunohistochemistry of paraffin-embedded Human brain tissue using TA350022 (NR3C1 Antibody) at dilution 1/30, treated with fusion protein. (Original magnification: ×200)