

Product datasheet for **TA350020**

GLIPR1 Rabbit Polyclonal Antibody

Product data:

Product Type:	Primary Antibodies
Applications:	IHC, WB
Recommended Dilution:	WB: 500-2000 WB positive control: Mouse small intestines tissue lysate IHC: 100-300 Positive control: Human tonsil Predicted cell location: Cytoplasm
Reactivity:	Human, Mouse
Host:	Rabbit
Isotype:	IgG
Clonality:	Polyclonal
Immunogen:	Fusion protein of human GLIPR1
Formulation:	pH7.4 PBS, 0.05% NaN ₃ , 40% Glycerol
Concentration:	lot specific
Purification:	Antigen affinity purification
Conjugation:	Unconjugated
Storage:	Store at -20°C as received.
Stability:	Stable for 12 months from date of receipt.
Predicted Protein Size:	30 kDa
Gene Name:	GLI pathogenesis related 1
Database Link:	NP_006842 Entrez Gene 73690 Mouse Entrez Gene 11010 Human P48060



[View online »](#)

Background:

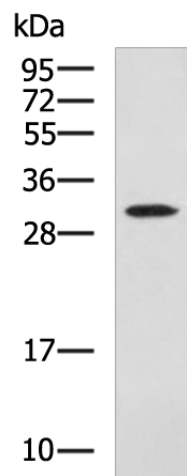
This gene encodes a protein with similarity to both the pathogenesis-related protein (PR) superfamily and the cysteine-rich secretory protein (CRISP) family. Increased expression of this gene is associated with myelomocytic differentiation in macrophage and decreased expression of this gene through gene methylation is associated with prostate cancer. The protein has proapoptotic activities in prostate and bladder cancer cells. This gene is a member of a cluster on chromosome 12 containing two other similar genes. Alternatively spliced variants which encode different protein isoforms have been described; however, not all variants have been fully characterized.

Synonyms:

CRISP7; GLIPR; RTVP1

Protein Families:

Transmembrane

Product images:

Gel: 12%SDS-PAGE

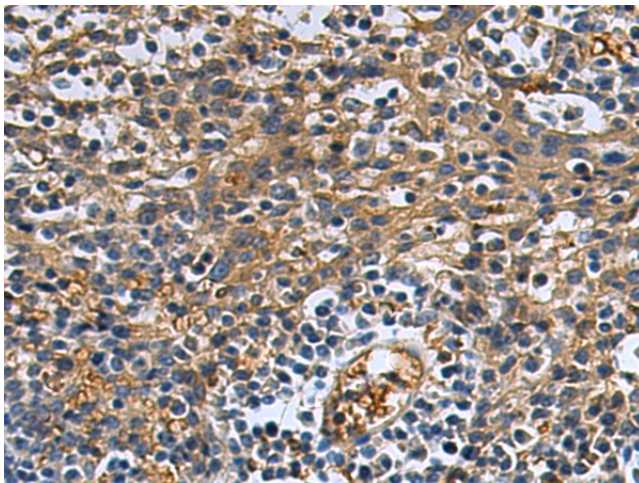
Lysate: 40 µg

Lane: Mouse small intestines tissue lysate

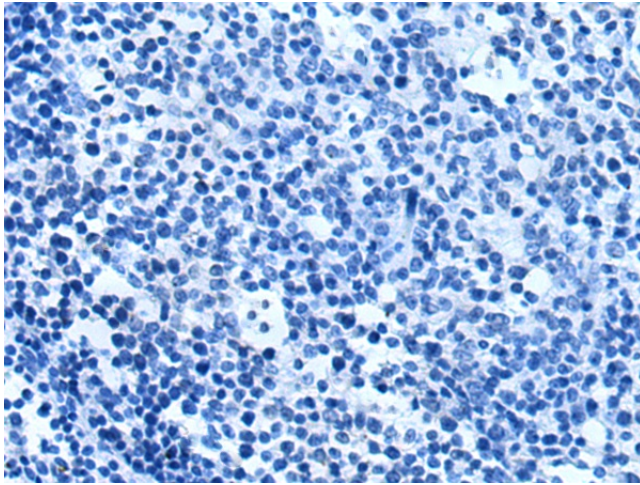
Primary antibody: TA350020 (GLIPR1 Antibody) at dilution 1/800

Secondary antibody: Goat anti rabbit IgG at 1/5000 dilution

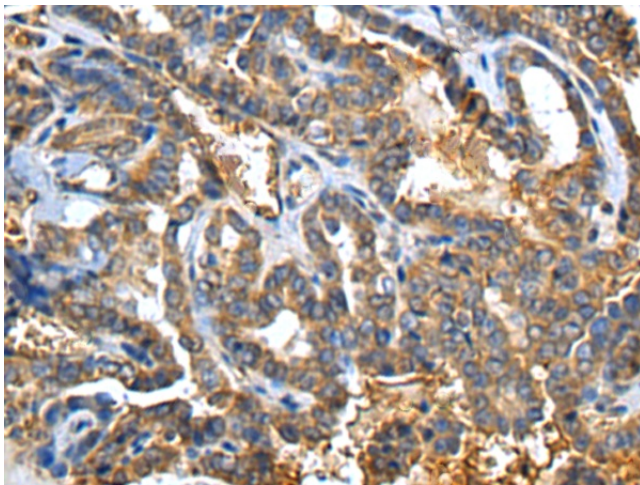
Exposure time: 10 minutes



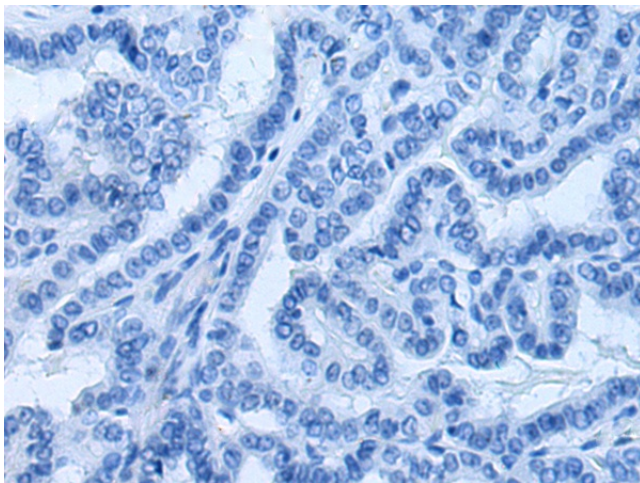
Immunohistochemistry of paraffin-embedded Human tonsil tissue using TA350020 (GLIPR1 Antibody) at dilution 1/110 (Original magnification: ×200)



Immunohistochemistry of paraffin-embedded Human tonsil tissue using TA350020 (GLIPR1 Antibody) at dilution 1/110, treated with fusion protein. (Original magnification: $\times 200$)



Immunohistochemistry of paraffin-embedded Human thyroid cancer tissue using TA350020 (GLIPR1 Antibody) at dilution 1/110 (Original magnification: $\times 200$)



Immunohistochemistry of paraffin-embedded Human thyroid cancer tissue using TA350020 (GLIPR1 Antibody) at dilution 1/110, treated with fusion protein. (Original magnification: $\times 200$)