

## Product datasheet for **TA350018**

### ID2 Rabbit Polyclonal Antibody

#### Product data:

Product Type:	Primary Antibodies
Applications:	IHC
Recommended Dilution:	IHC: 50-200 Positive control: Human liver cancer Predicted cell location: Cytoplasm
Reactivity:	Human, Mouse, Rat
Host:	Rabbit
Isotype:	IgG
Clonality:	Polyclonal
Immunogen:	Fusion protein of human ID2
Formulation:	pH7.4 PBS, 0.05% NaN <sub>3</sub> , 40% Glycerol
Concentration:	lot specific
Purification:	Antigen affinity purification
Conjugation:	Unconjugated
Storage:	Store at -20°C as received.
Stability:	Stable for 12 months from date of receipt.
Gene Name:	inhibitor of DNA binding 2, HLH protein
Database Link:	<a href="#">NP_002157</a> <a href="#">Entrez Gene 15902 Mouse</a> <a href="#">Entrez Gene 25587 Rat</a> <a href="#">Entrez Gene 3398 Human</a> <a href="#">Q02363</a>
Background:	The protein encoded by this gene belongs to the inhibitor of DNA binding family, members of which are transcriptional regulators that contain a helix-loop-helix (HLH) domain but not a basic domain. Members of the inhibitor of DNA binding family inhibit the functions of basic helix-loop-helix transcription factors in a dominant-negative manner by suppressing their heterodimerization partners through the HLH domains. This protein may play a role in negatively regulating cell differentiation. A pseudogene of this gene is located on chromosome 3.
Synonyms:	bHLHb26; GIG8; ID2A; ID2H

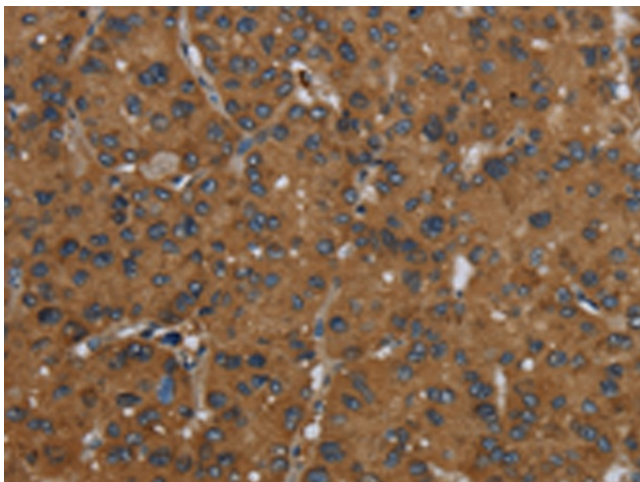


[View online »](#)

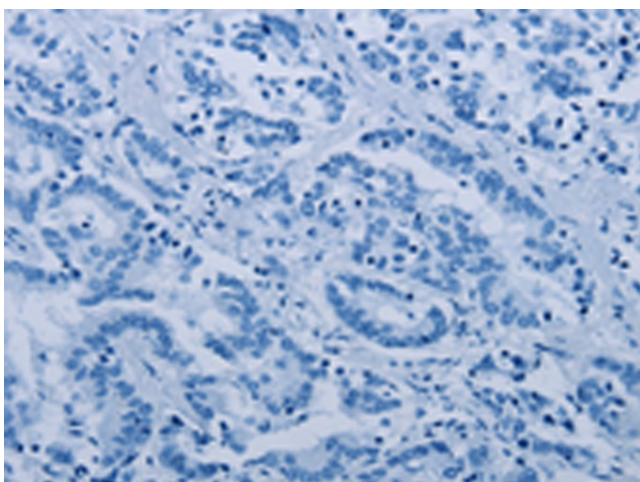
**Protein Families:** ES Cell Differentiation/IPS, Stem cell relevant signaling - TGF $\beta$ /BMP signaling pathway, Transcription Factors

**Protein Pathways:** TGF-beta signaling pathway

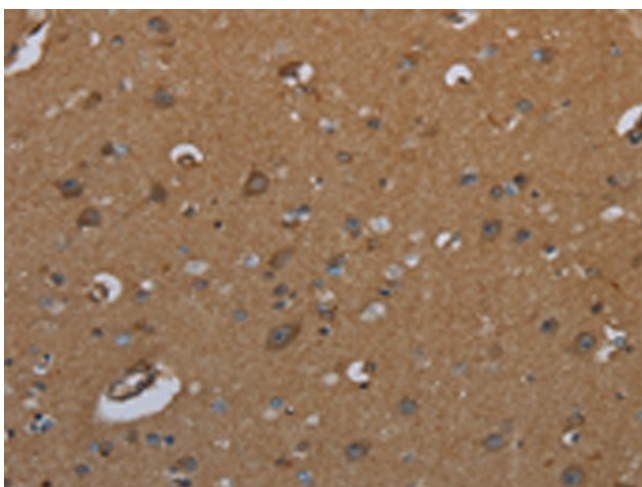
**Product images:**



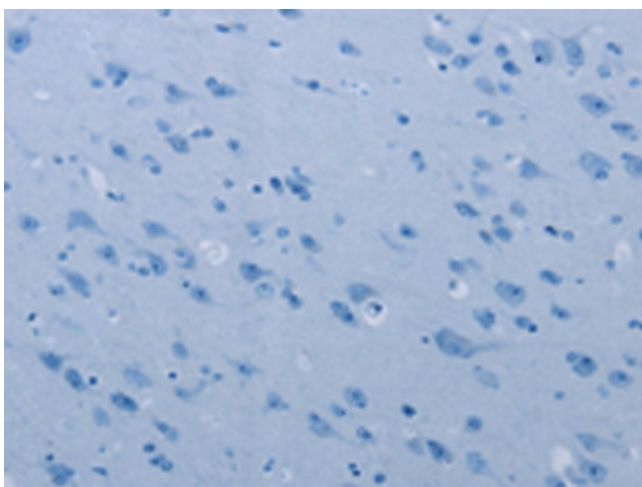
Immunohistochemistry of paraffin-embedded Human liver cancer tissue using TA350018 (ID2 Antibody) at dilution 1/30 (Original magnification:  $\times 200$ )



Immunohistochemistry of paraffin-embedded Human liver cancer tissue using TA350018 (ID2 Antibody) at dilution 1/30, treated with fusion protein. (Original magnification:  $\times 200$ )



Immunohistochemistry of paraffin-embedded Human brain tissue using TA350018 (ID2 Antibody) at dilution 1/30 (Original magnification: ×200)



Immunohistochemistry of paraffin-embedded Human brain tissue using TA350018 (ID2 Antibody) at dilution 1/30, treated with fusion protein. (Original magnification: ×200)