

## Product datasheet for **TA350016**

### **GH2 Rabbit Polyclonal Antibody**

#### **Product data:**

Product Type:	Primary Antibodies
Applications:	IHC, WB
Recommended Dilution:	WB: 500-2000 WB positive control: Human placenta tissue IHC: 50-200 Positive control: Human colon cancer Predicted cell location: Cytoplasm
Reactivity:	Human
Host:	Rabbit
Isotype:	IgG
Clonality:	Polyclonal
Immunogen:	Fusion protein of human GH2
Formulation:	pH7.4 PBS, 0.05% NaN <sub>3</sub> , 40% Glycerol
Concentration:	lot specific
Purification:	Antigen affinity purification
Conjugation:	Unconjugated
Storage:	Store at -20°C as received.
Stability:	Stable for 12 months from date of receipt.
Predicted Protein Size:	25 kDa
Gene Name:	growth hormone 2
Database Link:	<a href="#">NP_072050</a> <a href="#">Entrez Gene 2689 Human</a> <a href="#">P01242</a>



[View online »](#)

**Background:** The protein encoded by this gene is a member of the somatotropin/prolactin family of hormones which play an important role in growth control. The gene, along with four other related genes, is located at the growth hormone locus on chromosome 17 where they are interspersed in the same transcriptional orientation; an arrangement which is thought to have evolved by a series of gene duplications. The five genes share a remarkably high degree of sequence identity. Alternative splicing generates additional isoforms of each of the five growth hormones, leading to further diversity and potential for specialization.

**Synonyms:** GH-V; GHL; GHV; hGH-V

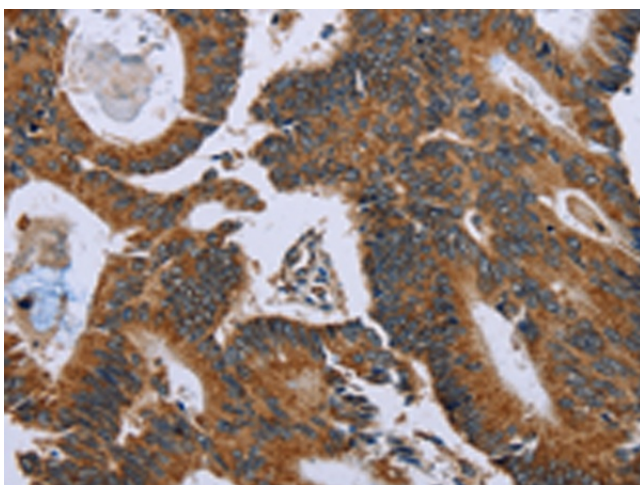
**Protein Families:** Druggable Genome, Secreted Protein

**Protein Pathways:** Cytokine-cytokine receptor interaction, Jak-STAT signaling pathway, Neuroactive ligand-receptor interaction

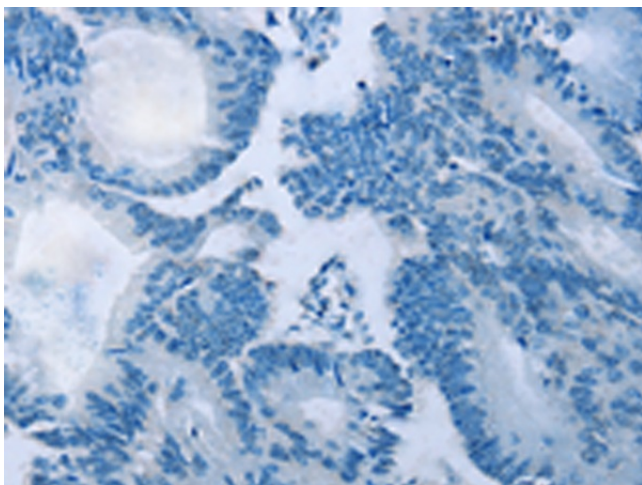
### Product images:



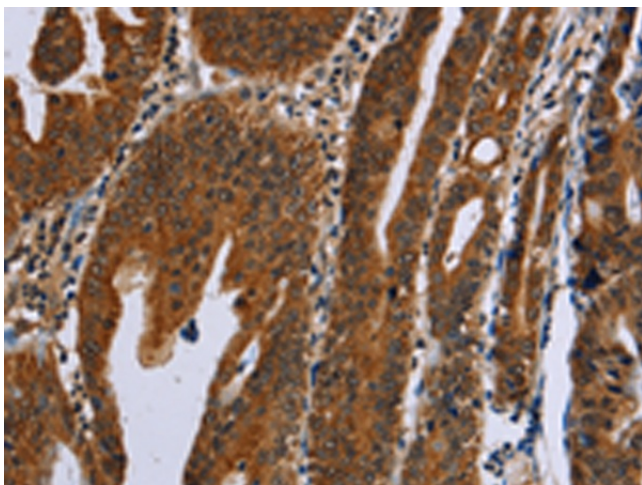
Gel: 10%SDS-PAGE  
Lysate: 40 µg  
Lane: Human placenta tissue  
Primary antibody: TA350016 (GH2 Antibody) at dilution 1/700  
Secondary antibody: Goat anti rabbit IgG at 1/8000 dilution  
Exposure time: 10 seconds



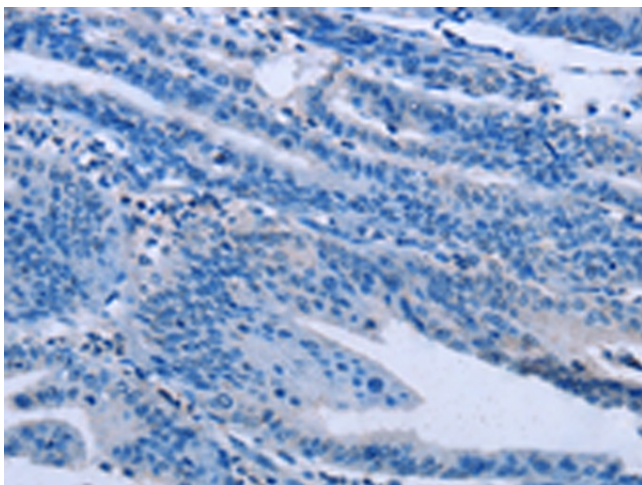
Immunohistochemistry of paraffin-embedded Human colon cancer tissue using TA350016 (GH2 Antibody) at dilution 1/60 (Original magnification: ×200)



Immunohistochemistry of paraffin-embedded Human colon cancer tissue using TA350016 (GH2 Antibody) at dilution 1/60, treated with fusion protein. (Original magnification: x200)



Immunohistochemistry of paraffin-embedded Human gastric cancer tissue using TA350016 (GH2 Antibody) at dilution 1/60 (Original magnification: x200)



Immunohistochemistry of paraffin-embedded Human gastric cancer tissue using TA350016 (GH2 Antibody) at dilution 1/60, treated with fusion protein. (Original magnification: x200)