

## Product datasheet for **TA350015**

### GGT1 Rabbit Polyclonal Antibody

#### Product data:

Product Type:	Primary Antibodies
Applications:	IHC, WB
Recommended Dilution:	WB: 500-2000 WB positive control: Human fetal liver tissue IHC: 50-200 Positive control: Human tonsil Predicted cell location: Cytoplasm
Reactivity:	Human, Rat
Host:	Rabbit
Isotype:	IgG
Clonality:	Polyclonal
Immunogen:	Fusion protein of human GGT1
Formulation:	pH7.4 PBS, 0.05% NaN <sub>3</sub> , 40% Glycerol
Concentration:	lot specific
Purification:	Antigen affinity purification
Conjugation:	Unconjugated
Storage:	Store at -20°C as received.
Stability:	Stable for 12 months from date of receipt.
Predicted Protein Size:	61 kDa
Gene Name:	gamma-glutamyltransferase 1
Database Link:	<a href="#">NP_038347</a> <a href="#">Entrez Gene 116568 Rat</a> <a href="#">Entrez Gene 2678 Human</a> <a href="#">P19440</a>



[View online »](#)

**Background:** The enzyme encoded by this gene is a type I gamma-glutamyltransferase that catalyzes the transfer of the glutamyl moiety of glutathione to a variety of amino acids and dipeptide acceptors. The enzyme is composed of a heavy chain and a light chain, which are derived from a single precursor protein. It is expressed in tissues involved in absorption and secretion and may contribute to the etiology of diabetes and other metabolic disorders. Multiple alternatively spliced variants have been identified. There are a number of related genes present on chromosomes 20 and 22, and putative pseudogenes for this gene on chromosomes 2, 13, and 22.

**Synonyms:** CD224; D22S672; D22S732; GGT; GGT 1; GTG

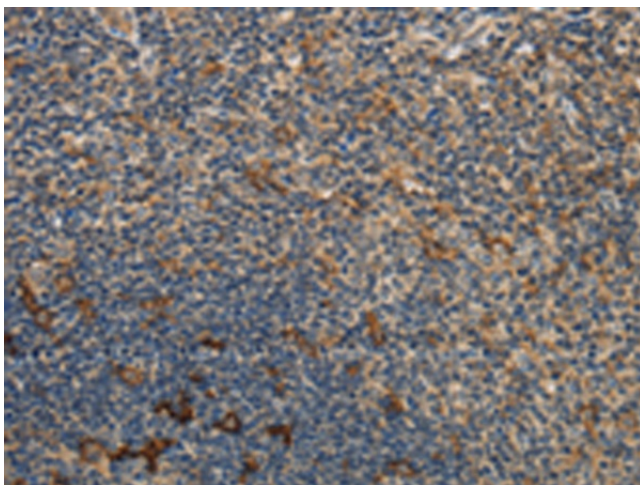
**Protein Families:** Protease, Transmembrane

**Protein Pathways:** Arachidonic acid metabolism, Cyanoamino acid metabolism, Glutathione metabolism, Metabolic pathways, Selenoamino acid metabolism, Taurine and hypotaurine metabolism

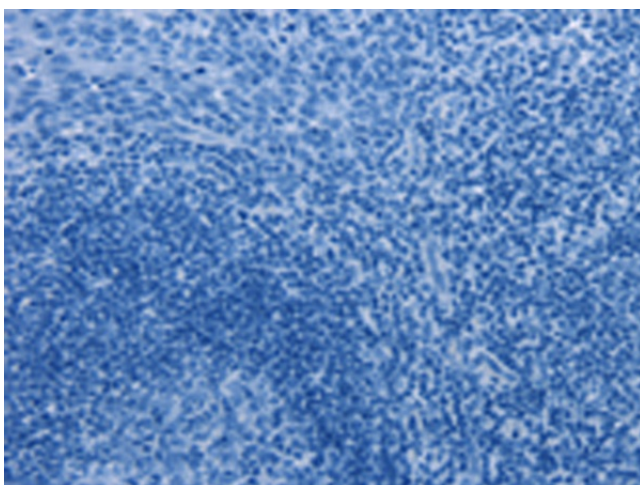
### Product images:



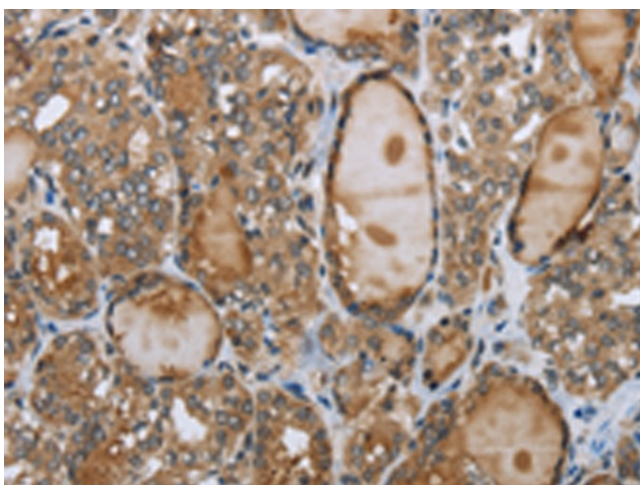
Gel: 10%SDS-PAGE  
Lysate: 40 µg  
Lane: Human fetal liver tissue  
Primary antibody: TA350015 (GGT1 Antibody) at dilution 1/300  
Secondary antibody: Goat anti rabbit IgG at 1/8000 dilution  
Exposure time: 40 seconds



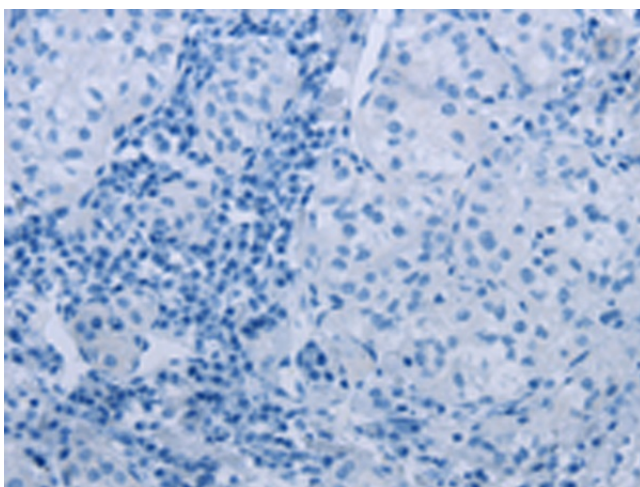
Immunohistochemistry of paraffin-embedded Human tonsil tissue using TA350015 (GGT1 Antibody) at dilution 1/40 (Original magnification:  $\times 200$ )



Immunohistochemistry of paraffin-embedded Human tonsil tissue using TA350015 (GGT1 Antibody) at dilution 1/40, treated with fusion protein. (Original magnification:  $\times 200$ )



Immunohistochemistry of paraffin-embedded Human thyroid cancer tissue using TA350015 (GGT1 Antibody) at dilution 1/40 (Original magnification:  $\times 200$ )



Immunohistochemistry of paraffin-embedded Human thyroid cancer tissue using TA350015 (GGT1 Antibody) at dilution 1/40, treated with fusion protein. (Original magnification: ×200)