

Product datasheet for **TA350013S**

RhoGDI (ARHGDI) Rabbit Polyclonal Antibody

Product data:

Product Type:	Primary Antibodies
Applications:	IHC, WB
Recommended Dilution:	WB: 500-2000 WB positive control: Mouse spleen tissue, A375, A549 and HT-29 cells, mouse lung and Hela cells IHC: 100-300 Positive control: Human breast cancer Predicted cell location: Cytoplasm
Reactivity:	Human, Mouse, Rat
Host:	Rabbit
Isotype:	IgG
Clonality:	Polyclonal
Immunogen:	Fusion protein of human ARHGDI
Formulation:	pH7.4 PBS, 0.05% NaN ₃ , 40% Glycerol
Purification:	Antigen affinity purification
Conjugation:	Unconjugated
Storage:	Store at -20°C as received.
Stability:	Stable for 12 months from date of receipt.
Predicted Protein Size:	23 kDa
Gene Name:	Rho GDP dissociation inhibitor alpha
Database Link:	NP_004300 Entrez Gene 192662 Mouse Entrez Gene 360678 Rat Entrez Gene 396 Human P52565
Background:	Aplysia Ras-related homologs (ARHs), also called Rho genes, belong to the RAS gene superfamily encoding small guanine nucleotide exchange (GTP/GDP) factors. The ARH proteins may be kept in the inactive, GDP-bound state by interaction with GDP dissociation inhibitors, such as ARHGDI
Synonyms:	GDIA1; HEL-S-47e; NPHS8; RHOGDI; RHOGDI-1

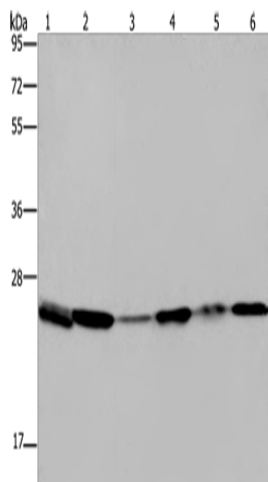


[View online »](#)

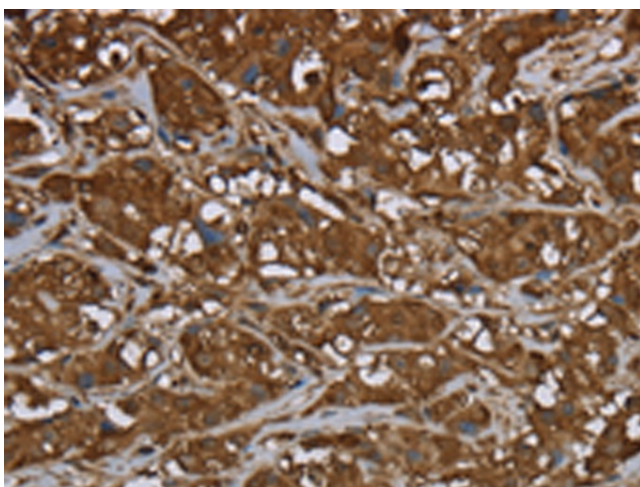
Protein Families: Druggable Genome

Protein Pathways: Neurotrophin signaling pathway

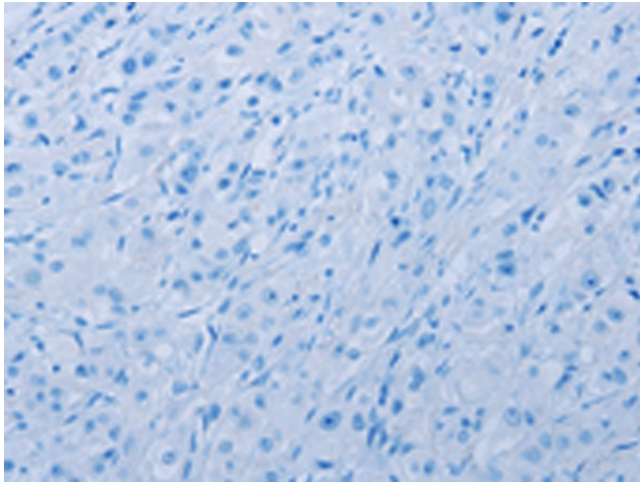
Product images:



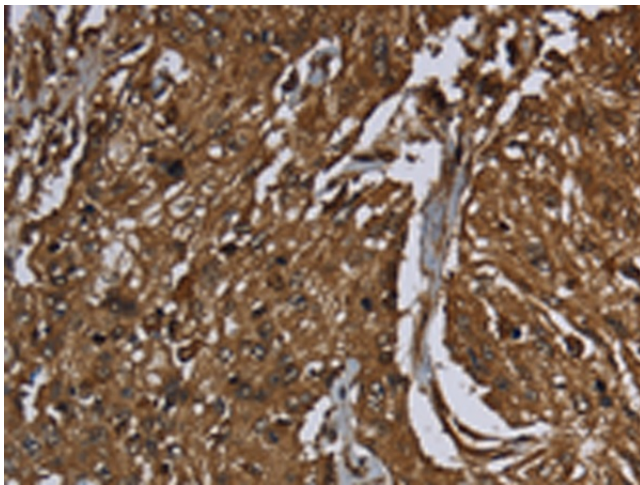
Gel: 10%SDS-PAGE
Lysate: 40 µg
Lane 1-6: Mouse spleen tissue
A375 cells
A549 cells
HT29 cells
mouse lung tissue
Hela cells
Primary antibody: [TA350013] (ARHGDI
Antibody) at dilution 1/400
Secondary antibody: Goat anti rabbit IgG at
1/8000 dilution
Exposure time: 10 seconds



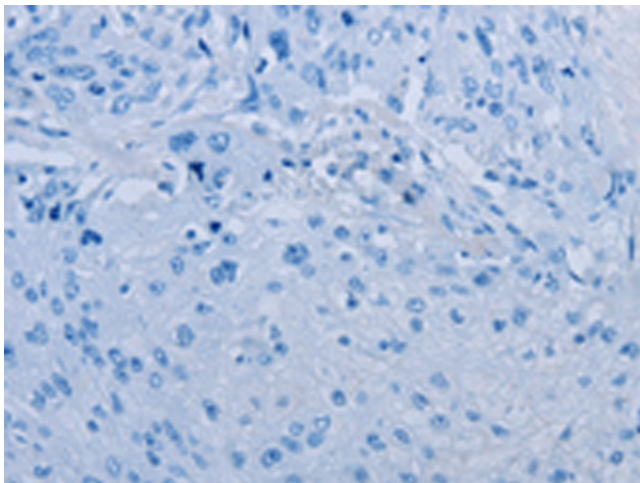
Immunohistochemistry of paraffin-embedded
Human breast cancer tissue using [TA350013]
(ARHGDI Antibody) at dilution 1/50 (Original
magnification: ×200)



Immunohistochemistry of paraffin-embedded Human breast cancer tissue using [TA350013] (ARHGDI Antibody) at dilution 1/50, treated with fusion protein. (Original magnification: ×200)



Immunohistochemistry of paraffin-embedded Human esophagus cancer tissue using [TA350013] (ARHGDI Antibody) at dilution 1/50 (Original magnification: ×200)



Immunohistochemistry of paraffin-embedded Human esophagus cancer tissue using [TA350013] (ARHGDI Antibody) at dilution 1/50, treated with fusion protein. (Original magnification: ×200)