

## Product datasheet for **TA350013**

### RhoGDI (ARHGDI) Rabbit Polyclonal Antibody

#### Product data:

Product Type:	Primary Antibodies
Applications:	IHC, WB
Recommended Dilution:	WB: 500-2000 WB positive control: Mouse spleen tissue, A375, A549 and HT-29 cells, mouse lung and Hela cells IHC: 100-300 Positive control: Human breast cancer Predicted cell location: Cytoplasm
Reactivity:	Human, Mouse, Rat
Host:	Rabbit
Isotype:	IgG
Clonality:	Polyclonal
Immunogen:	Fusion protein of human ARHGDI
Formulation:	pH7.4 PBS, 0.05% NaN <sub>3</sub> , 40% Glycerol
Concentration:	lot specific
Purification:	Antigen affinity purification
Conjugation:	Unconjugated
Storage:	Store at -20°C as received.
Stability:	Stable for 12 months from date of receipt.
Predicted Protein Size:	23 kDa
Gene Name:	Rho GDP dissociation inhibitor alpha
Database Link:	<a href="#">NP_004300</a> <a href="#">Entrez Gene 192662 Mouse</a> <a href="#">Entrez Gene 360678 Rat</a> <a href="#">Entrez Gene 396 Human P52565</a>
Background:	Aplysia Ras-related homologs (ARHs), also called Rho genes, belong to the RAS gene superfamily encoding small guanine nucleotide exchange (GTP/GDP) factors. The ARH proteins may be kept in the inactive, GDP-bound state by interaction with GDP dissociation inhibitors, such as ARHGDI



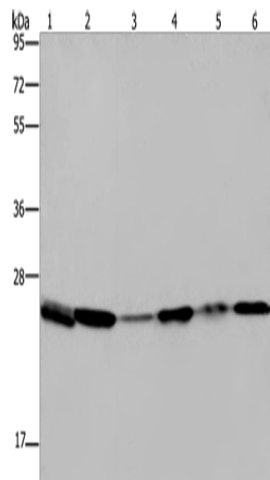
[View online »](#)

**Synonyms:** GDIA1; HEL-S-47e; NPHS8; RHOGDI; RHOGDI-1

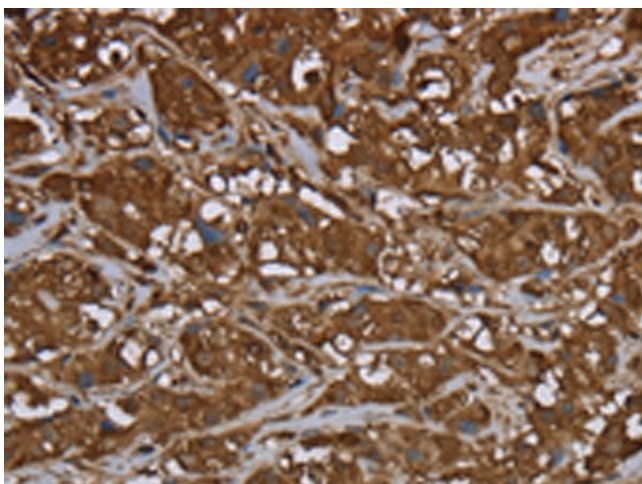
**Protein Families:** Druggable Genome

**Protein Pathways:** Neurotrophin signaling pathway

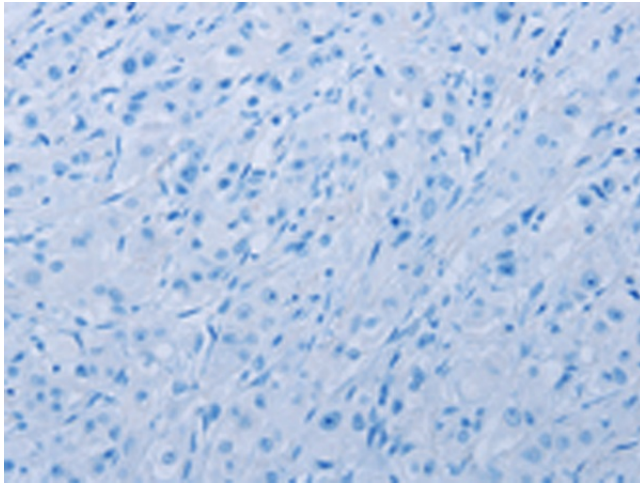
**Product images:**



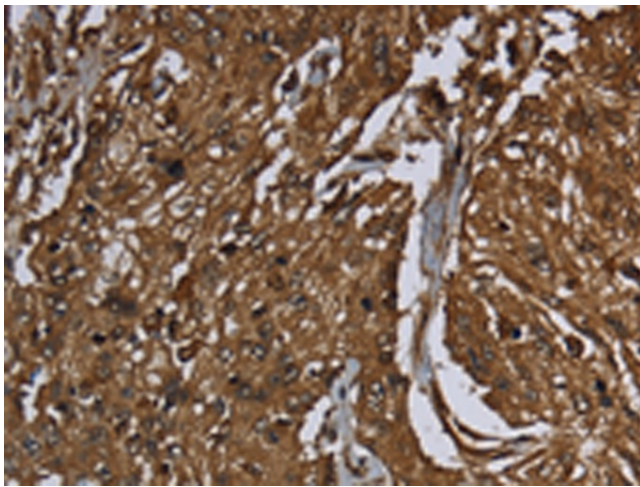
Gel: 10%SDS-PAGE  
Lysate: 40 µg  
Lane 1-6: Mouse spleen tissue  
A375 cells  
A549 cells  
HT29 cells  
mouse lung tissue  
Hela cells  
Primary antibody: TA350013 (ARHGDI Antibody)  
at dilution 1/400  
Secondary antibody: Goat anti rabbit IgG at  
1/8000 dilution  
Exposure time: 10 seconds



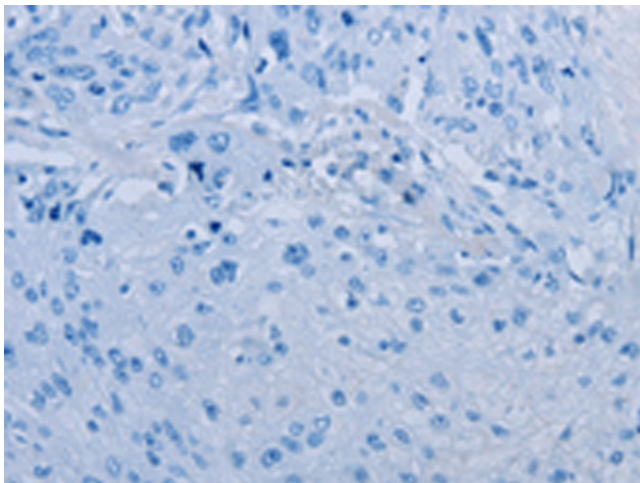
Immunohistochemistry of paraffin-embedded  
Human breast cancer tissue using TA350013  
(ARHGDI Antibody) at dilution 1/50 (Original  
magnification: ×200)



Immunohistochemistry of paraffin-embedded Human breast cancer tissue using TA350013 (ARHGDI Antibody) at dilution 1/50, treated with fusion protein. (Original magnification: ×200)



Immunohistochemistry of paraffin-embedded Human esophagus cancer tissue using TA350013 (ARHGDI Antibody) at dilution 1/50 (Original magnification: ×200)



Immunohistochemistry of paraffin-embedded Human esophagus cancer tissue using TA350013 (ARHGDI Antibody) at dilution 1/50, treated with fusion protein. (Original magnification: ×200)