

Product datasheet for **TA350012S**

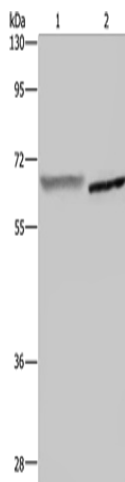
GCKR Rabbit Polyclonal Antibody

Product data:

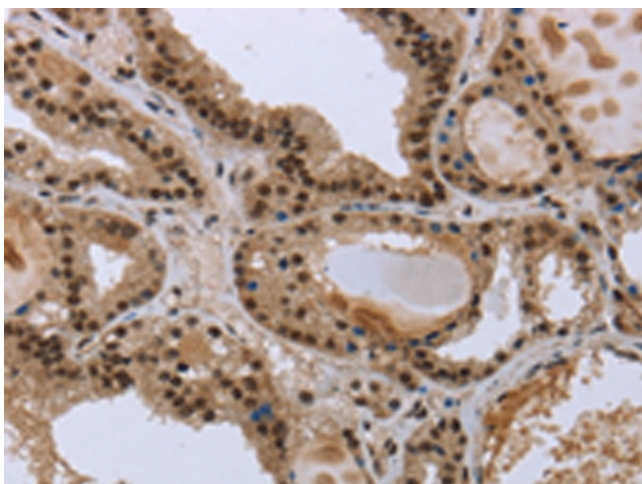
Product Type:	Primary Antibodies
Applications:	IHC, WB
Recommended Dilution:	WB: 200-1000 WB positive control: Human placenta and mouse liver tissue IHC: 50-200 Positive control: Human colon cancer Predicted cell location: Cytoplasm or Nucleus
Reactivity:	Human, Mouse, Rat
Host:	Rabbit
Isotype:	IgG
Clonality:	Polyclonal
Immunogen:	Fusion protein of human GCKR
Formulation:	pH7.4 PBS, 0.05% NaN ₃ , 40% Glycerol
Purification:	Antigen affinity purification
Conjugation:	Unconjugated
Storage:	Store at -20°C as received.
Stability:	Stable for 12 months from date of receipt.
Predicted Protein Size:	69 kDa
Gene Name:	glucokinase (hexokinase 4) regulator
Database Link:	NP_001477 Entrez Gene 25658 Rat Entrez Gene 231103 Mouse Entrez Gene 2646 Human Q14397
Background:	This gene encodes a protein belonging to the GCKR subfamily of the SIS (Sugar ISomerase) family of proteins. The gene product is a regulatory protein that inhibits glucokinase in liver and pancreatic islet cells by binding non-covalently to form an inactive complex with the enzyme. This gene is considered a susceptibility gene candidate for a form of maturity-onset diabetes of the young (MODY).
Synonyms:	FGQTL5; GKRP



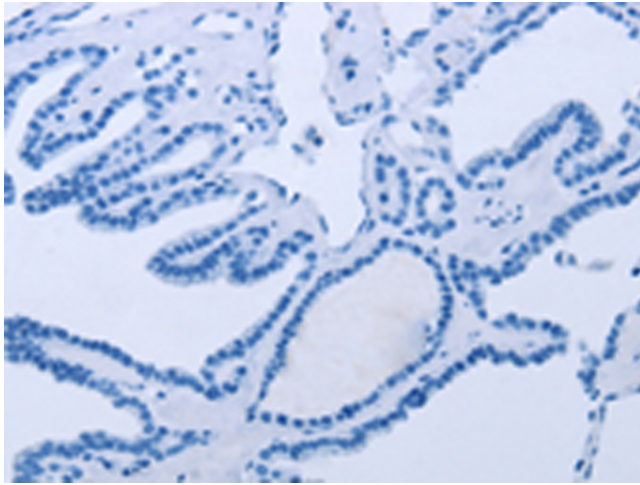
[View online »](#)

Product images:

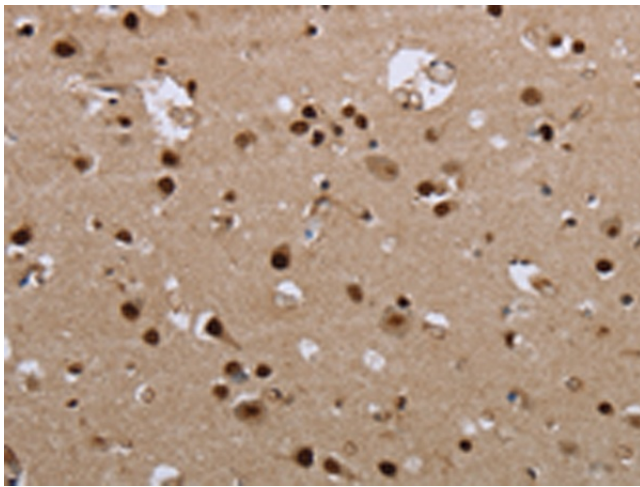
Gel: 8%SDS-PAGE
Lysate: 40 μ g
Lane 1-2: Human placenta tissue
mouse liver tissue
Primary antibody: [TA350012] (GCKR Antibody) at
dilution 1/400
Secondary antibody: Goat anti rabbit IgG at
1/8000 dilution
Exposure time: 2 minutes



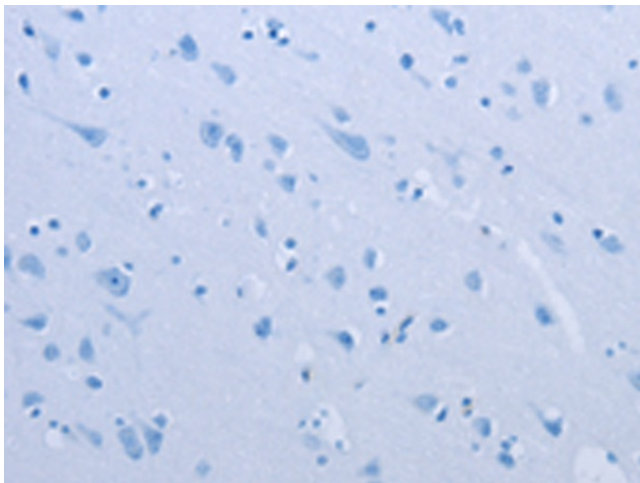
Immunohistochemistry of paraffin-embedded
Human colon cancer tissue using [TA350012]
(GCKR Antibody) at dilution 1/50 (Original
magnification: $\times 200$)



Immunohistochemistry of paraffin-embedded Human colon cancer tissue using [TA350012] (GCKR Antibody) at dilution 1/50, treated with fusion protein. (Original magnification: $\times 200$)



Immunohistochemistry of paraffin-embedded Human brain tissue using [TA350012] (GCKR Antibody) at dilution 1/50 (Original magnification: $\times 200$)



Immunohistochemistry of paraffin-embedded Human brain tissue using [TA350012] (GCKR Antibody) at dilution 1/50, treated with fusion protein. (Original magnification: $\times 200$)