

## Product datasheet for **TA350009**

### GBP5 Rabbit Polyclonal Antibody

#### Product data:

Product Type:	Primary Antibodies
Applications:	IHC, WB
Recommended Dilution:	WB: 200-1000 WB positive control: Human placenta tissue IHC: 50-200 Positive control: Human liver cancer Predicted cell location: Cytoplasm
Reactivity:	Human
Host:	Rabbit
Isotype:	IgG
Clonality:	Polyclonal
Immunogen:	Fusion protein of human GBP5
Formulation:	pH7.4 PBS, 0.05% NaN <sub>3</sub> , 40% Glycerol
Concentration:	lot specific
Purification:	Antigen affinity purification
Conjugation:	Unconjugated
Storage:	Store at -20°C as received.
Stability:	Stable for 12 months from date of receipt.
Predicted Protein Size:	67 kDa
Gene Name:	guanylate binding protein 5
Database Link:	<a href="#">NP_443174</a> <a href="#">Entrez Gene 115362 Human</a> <a href="#">Q96PP8</a>



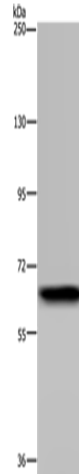
[View online »](#)

**Background:**

GBP5 (guanylate binding protein 5), also known as GBP-TA antigen, is a 586 amino acid protein that localizes to the cytoplasmic side of the cell membrane. Belonging to the interferon (IFN)-inducible guanylate-binding protein (GBP) family, GBP5 may be involved in the inflammatory response or with cell proliferation and is suggested to have possible cancer-related functions. The gene encoding GBP5 maps to human chromosome 1, which spans 260 million base pairs, contains over 3,000 genes and comprises nearly 8% of the human genome.

**Synonyms:**

GBP-5

**Product images:**

Gel: 6%SDS-PAGE

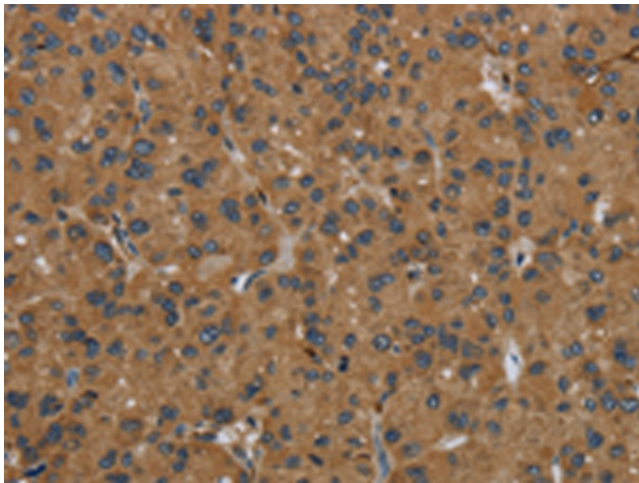
Lysate: 40  $\mu$ g

Lane: Human placenta tissue

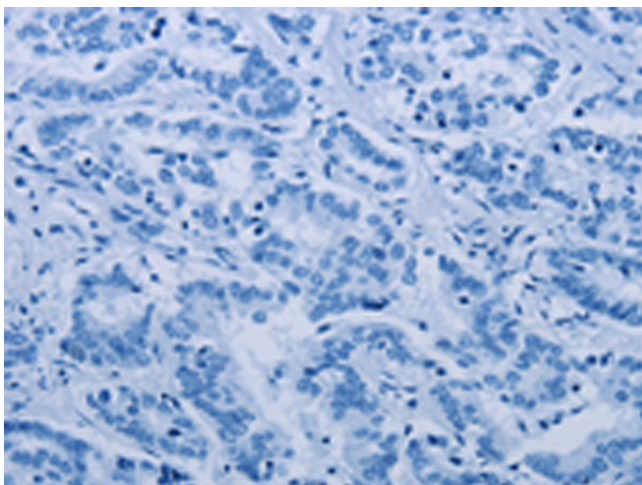
Primary antibody: TA350009 (GBP5 Antibody) at dilution 1/300

Secondary antibody: Goat anti rabbit IgG at 1/8000 dilution

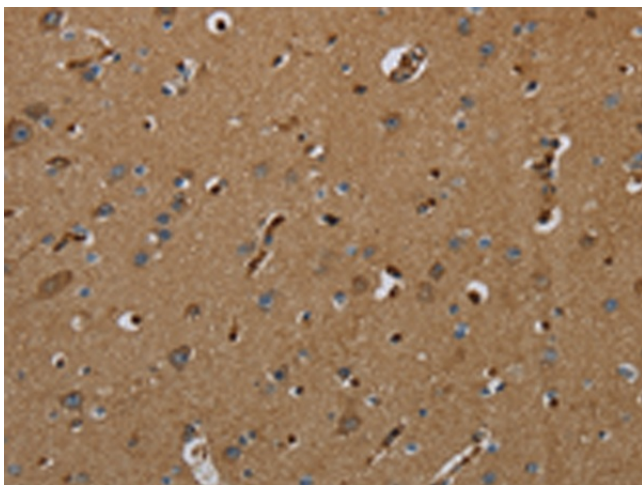
Exposure time: 5 minutes



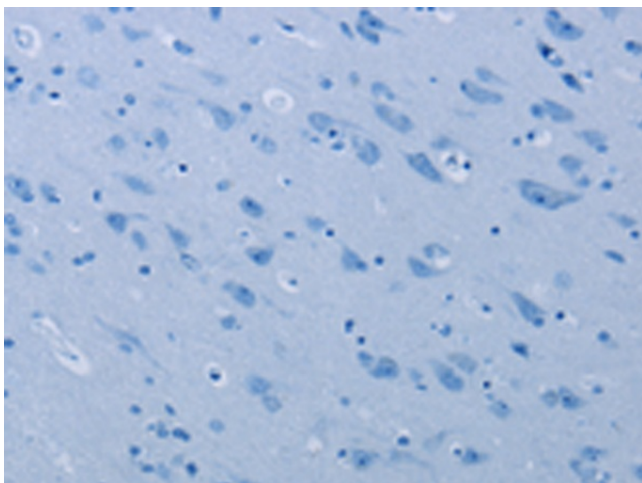
Immunohistochemistry of paraffin-embedded Human liver cancer tissue using TA350009 (GBP5 Antibody) at dilution 1/50 (Original magnification:  $\times$ 200)



Immunohistochemistry of paraffin-embedded Human liver cancer tissue using TA350009 (GBP5 Antibody) at dilution 1/50, treated with fusion protein. (Original magnification: x200)



Immunohistochemistry of paraffin-embedded Human brain tissue using TA350009 (GBP5 Antibody) at dilution 1/50 (Original magnification: x200)



Immunohistochemistry of paraffin-embedded Human brain tissue using TA350009 (GBP5 Antibody) at dilution 1/50, treated with fusion protein. (Original magnification: x200)