

## Product datasheet for **TA350008S**

### GABA A Receptor beta 1 (GABRB1) Rabbit Polyclonal Antibody

#### Product data:

Product Type:	Primary Antibodies
Applications:	IHC, WB
Recommended Dilution:	WB: 500-2000 WB positive control: Human fetal brain tissue IHC: 50-200 Positive control: Human ovarian cancer Predicted cell location: Cytoplasm
Reactivity:	Human, Mouse, Rat
Host:	Rabbit
Isotype:	IgG
Clonality:	Polyclonal
Immunogen:	Fusion protein of human GABRB1
Formulation:	pH7.4 PBS, 0.05% NaN <sub>3</sub> , 40% Glycerol
Purification:	Antigen affinity purification
Conjugation:	Unconjugated
Storage:	Store at -20°C as received.
Stability:	Stable for 12 months from date of receipt.
Predicted Protein Size:	54 kDa
Gene Name:	gamma-aminobutyric acid type A receptor beta1 subunit
Database Link:	<a href="#">NP_000803</a> <a href="#">Entrez Gene 14400 Mouse</a> <a href="#">Entrez Gene 25450 Rat</a> <a href="#">Entrez Gene 2560 Human</a> <a href="#">P18505</a>
Background:	The gamma-aminobutyric acid (GABA) A receptor is a multisubunit chloride channel that mediates the fastest inhibitory synaptic transmission in the central nervous system. This gene encodes GABA A receptor, beta 1 subunit. It is mapped to chromosome 4p12 in a cluster comprised of genes encoding alpha 4, alpha 2 and gamma 1 subunits of the GABA A receptor. Alteration of this gene is implicated in the pathogenetics of schizophrenia.
Synonyms:	beta 1; gamma-aminobutyric acid (GABA) A receptor

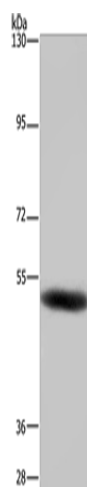


[View online »](#)

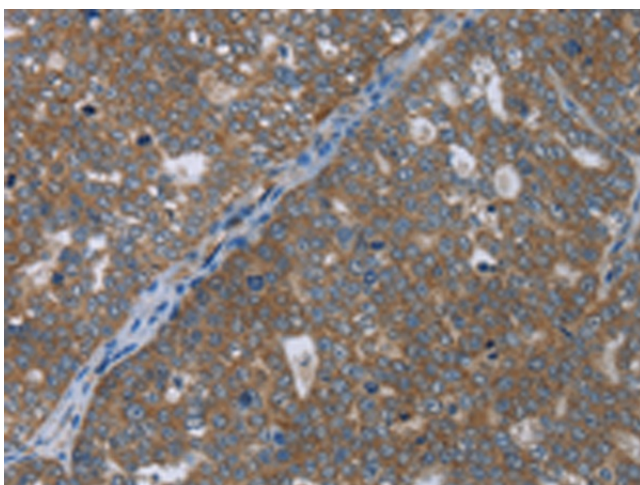
**Protein Families:** Druggable Genome, Ion Channels: Cys-loop Receptors, Transmembrane

**Protein Pathways:** Neuroactive ligand-receptor interaction

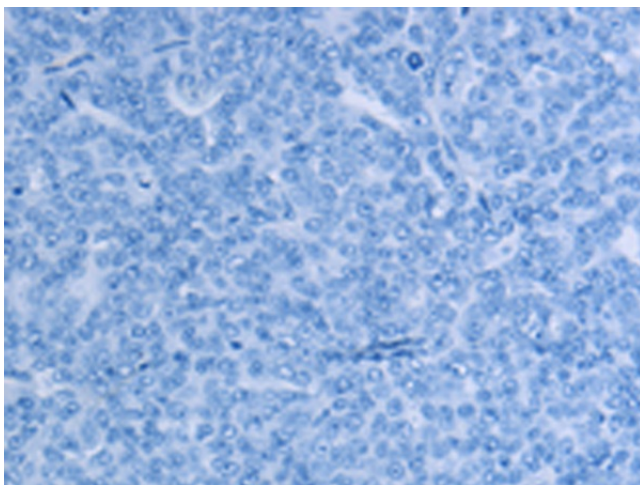
**Product images:**



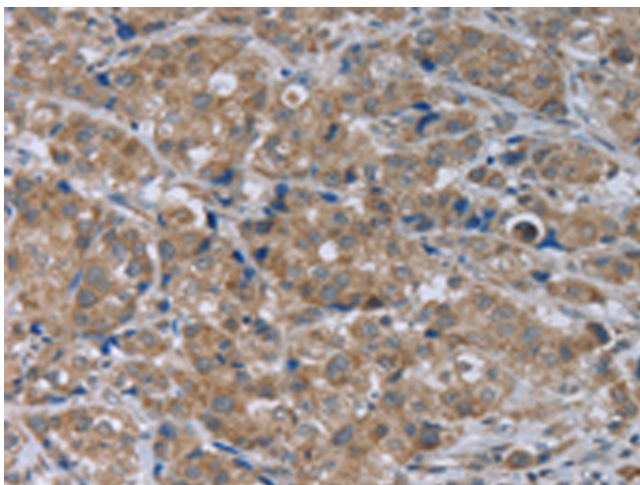
Gel: 6%SDS-PAGE  
Lysate: 40  $\mu$ g  
Lane: Human fetal brain tissue  
Primary antibody: [TA350008] (GABRB1 Antibody)  
at dilution 1/500  
Secondary antibody: Goat anti rabbit IgG at  
1/8000 dilution  
Exposure time: 1 minute



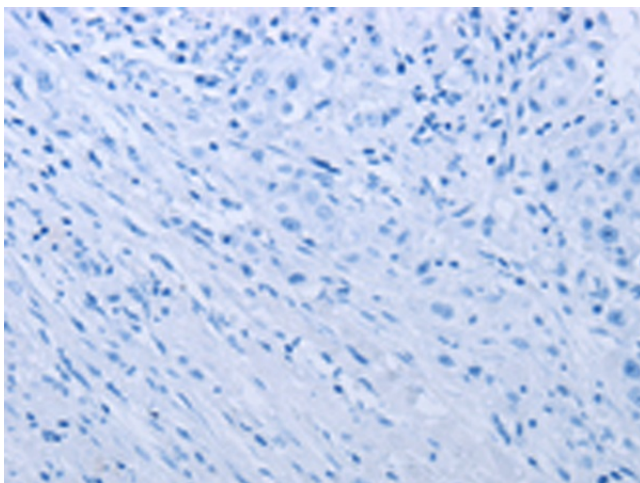
Immunohistochemistry of paraffin-embedded  
Human ovarian cancer tissue using [TA350008]  
(GABRB1 Antibody) at dilution 1/50 (Original  
magnification:  $\times$ 200)



Immunohistochemistry of paraffin-embedded Human ovarian cancer tissue using [TA350008] (GABRB1 Antibody) at dilution 1/50, treated with fusion protein. (Original magnification:  $\times 200$ )



Immunohistochemistry of paraffin-embedded Human breast cancer tissue using [TA350008] (GABRB1 Antibody) at dilution 1/50 (Original magnification:  $\times 200$ )



Immunohistochemistry of paraffin-embedded Human breast cancer tissue using [TA350008] (GABRB1 Antibody) at dilution 1/50, treated with fusion protein. (Original magnification:  $\times 200$ )