

Product datasheet for **TA35002S**

GADD45B Rabbit Polyclonal Antibody

Product data:

Product Type:	Primary Antibodies
Applications:	IHC
Recommended Dilution:	IHC: 50-200 Positive control: Human thyroid cancer Predicted cell location: Cytoplasm
Reactivity:	Human, Mouse
Host:	Rabbit
Isotype:	IgG
Clonality:	Polyclonal
Immunogen:	Fusion protein of human GADD45B
Formulation:	pH7.4 PBS, 0.05% NaN ₃ , 40% Glycerol
Purification:	Antigen affinity purification
Conjugation:	Unconjugated
Storage:	Store at -20°C as received.
Stability:	Stable for 12 months from date of receipt.
Gene Name:	growth arrest and DNA damage inducible beta
Database Link:	NP_056490 Entrez Gene 17873 Mouse Entrez Gene 4616 Human O75293

Background: This gene is a member of a group of genes whose transcript levels are increased following stressful growth arrest conditions and treatment with DNA-damaging agents. The genes in this group respond to environmental stresses by mediating activation of the p38/JNK pathway. This activation is mediated via their proteins binding and activating MTK1/MEKK4 kinase, which is an upstream activator of both p38 and JNK MAPKs. The function of these genes or their protein products is involved in the regulation of growth and apoptosis. These genes are regulated by different mechanisms, but they are often coordinately expressed and can function cooperatively in inhibiting cell growth.

Synonyms: GADD45BETA; MYD118

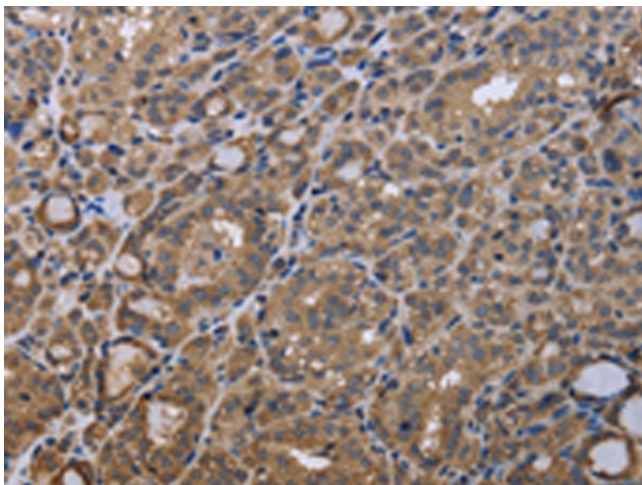


[View online »](#)

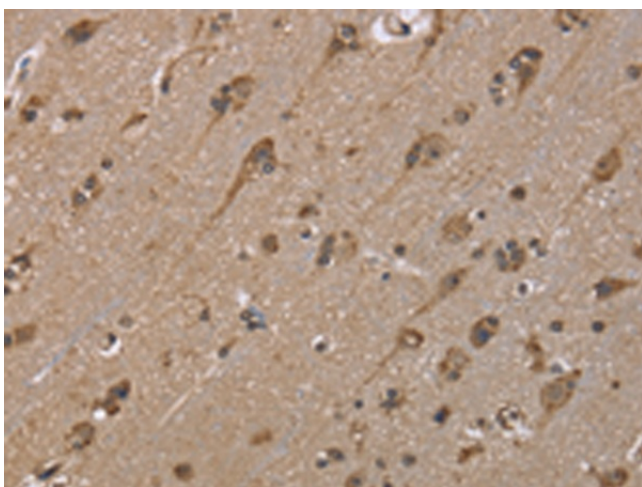
Protein Families: Druggable Genome

Protein Pathways: Cell cycle, MAPK signaling pathway, p53 signaling pathway

Product images:



Immunohistochemistry of paraffin-embedded Human thyroid cancer tissue using [TA350002] (GADD45B Antibody) at dilution 1/40. (Original magnification: $\times 200$)



Immunohistochemistry of paraffin-embedded Human brain tissue using [TA350002] (GADD45B Antibody) at dilution 1/40. (Original magnification: $\times 200$)