

Product datasheet for **TA350001S**

GABPB2 (GABPB1) Rabbit Polyclonal Antibody

Product data:

Product Type:	Primary Antibodies
Applications:	IHC, WB
Recommended Dilution:	WB: 500-2000 WB positive control: MCF-7 and 231 cells IHC: 50-200 Positive control: Human colon cancer Predicted cell location: Cytoplasm
Reactivity:	Human, Mouse
Host:	Rabbit
Isotype:	IgG
Clonality:	Polyclonal
Immunogen:	Fusion protein of human GABPB2
Formulation:	pH7.4 PBS, 0.05% NaN ₃ , 40% Glycerol
Purification:	Antigen affinity purification
Conjugation:	Unconjugated
Storage:	Store at -20°C as received.
Stability:	Stable for 12 months from date of receipt.
Predicted Protein Size:	49 kDa
Gene Name:	GA binding protein transcription factor beta subunit 1
Database Link:	NP_005245 Entrez Gene 14391 Mouse Entrez Gene 2553 Human Q06547
Background:	The GABPB gene encodes at least 4 beta subunit isoforms that were originally thought to be encoded by 2 separate genes, GABPB1 and GABPB2. The gene on Hsa1q was named GABPB2 and the gene on Hsa15q was named GABPB1. The predicted GABPB1 and GABPB2 subunits contain 383 and 347 amino acids, respectively, and are highly homologous.
Synonyms:	BABPB2; E4TF1; E4TF1-47; E4TF1-53; E4TF1B; GABPB; GABPB-1; GABPB2; NRF2B1; NRF2B2
Protein Families:	Transcription Factors

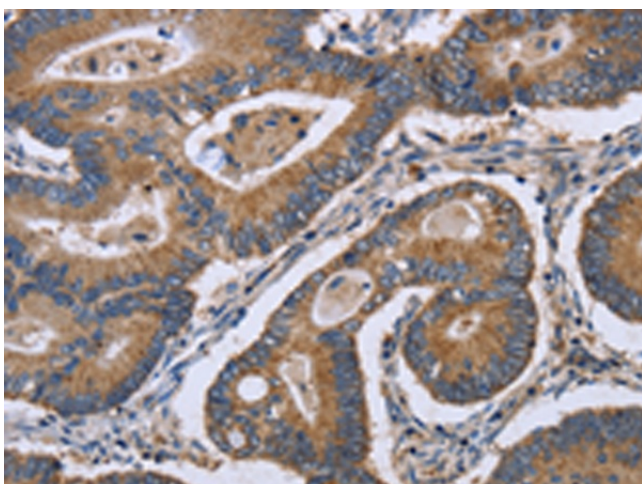


[View online »](#)

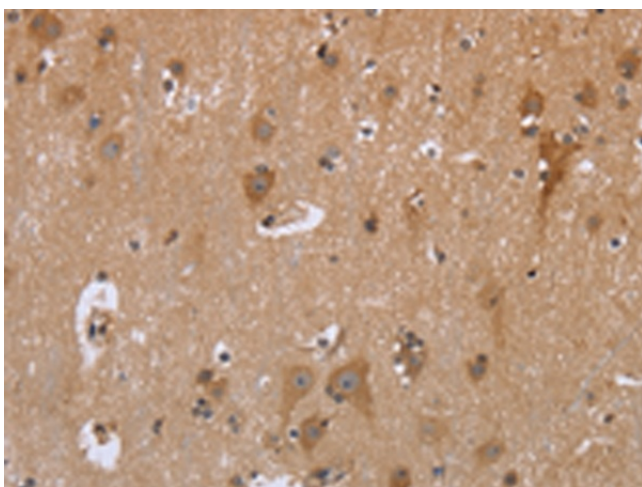
Product images:



Gel: 8%SDS-PAGE
Lysate: 40 μ g
Lane 1-2: MCF7 cells
231 cells
Primary antibody: [TA350001] (GABPB2 Antibody)
at dilution 1/550
Secondary antibody: Goat anti rabbit IgG at
1/8000 dilution
Exposure time: 1 minute



Immunohistochemistry of paraffin-embedded
Human colon cancer tissue using [TA350001]
(GABPB2 Antibody) at dilution 1/30. (Original
magnification: \times 200)



Immunohistochemistry of paraffin-embedded Human brain tissue using [TA350001] (GABPB2 Antibody) at dilution 1/30. (Original magnification: ×200)